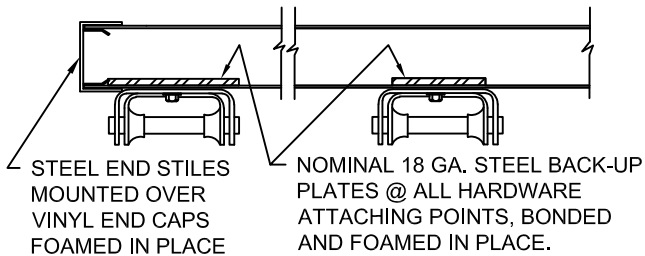
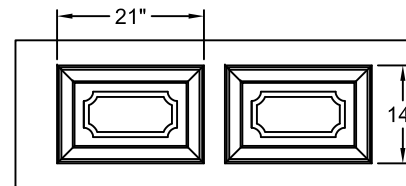


SIDE ELEVATION OF DOOR



HINGE DETAIL



PANEL DIMENSIONS

ADDITIONAL NOTES:

AVAILABLE SECTION HEIGHTS ARE 21", AND 24", INSULATED BY FOAMING-IN-PLACE WITH HIGH DENSITY POLYURETHANE FOAM, MINIMUM 2.20 LBS./CUBIC FT. , PROVIDING A U-VALUE OF .039 (R-VALUE 25.80). EACH SECTION IS CONSTRUCTED TO PROVIDE FOR FULL THERMAL BREAK AT TOP, BOTTOM AND ENDS OF SECTION. NOMINAL THICKNESS OF SECTION WITH END STILES TO BE 3". STEEL SKINS TO BE PRE-PAINTED WITH A URETHANE PRIMER BASE COAT AND A BAKED-ON POLYESTER TOP COAT.

MODEL NUMBER

890

320 Sycamore St.
Wauseon, Ohio 43567
© Copyright 2020

