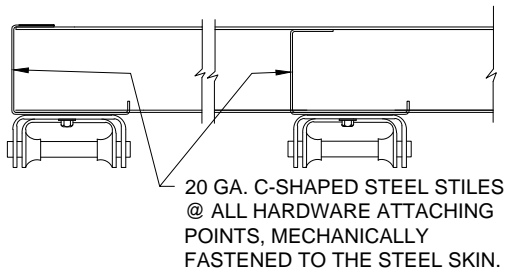
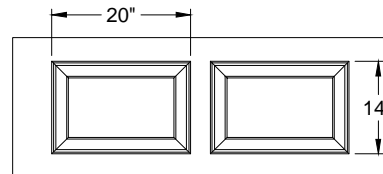


**SIDE ELEVATION OF DOOR**



**HINGE DETAIL**



**PANEL DIMENSIONS**

**ADDITIONAL NOTES:**

AVAILABLE SECTION HEIGHTS ARE 18", 21" AND 24". NOMINAL THICKNESS OF SECTION WITH END STILES TO BE 2". STEEL SKINS TO BE PRE-PAINTED WITH A URETHANE PRIMER BASE COAT AND A BAKED-ON POLYESTER TOP COAT. INTERIOR COLOR IS WHITE. INSULATED MODELS ("L" AT END) HAVE MATT BACK POLYSTYRENE FOAM, PROVIDING A U-VALUE OF 0.135 (R-VALUE OF 7.45).

MODEL NUMBER

**R2480/R2480L**

320 Sycamore St.  
Wauseon, Ohio 43567  
© Copyright 2017

