

PART NUMBER	DIM "A"	DIM "B"
12100	30	22
12103	36	28
12104	48	40

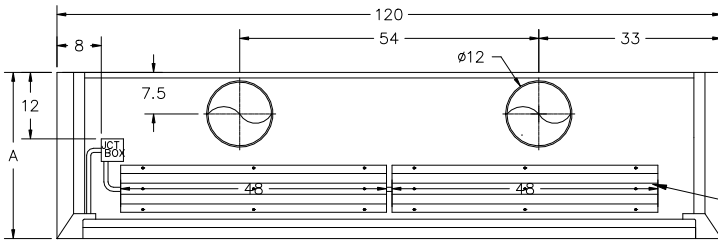
INTERNATIONAL 220V/50Hz		
PART NUMBER	DIM "C"	DIM "D"
12430	AC 30	22
12233	36	28
12234	48	40

ALL OF THE ABOVE HAVE VAPOR PROOF LIGHT FIXTURES

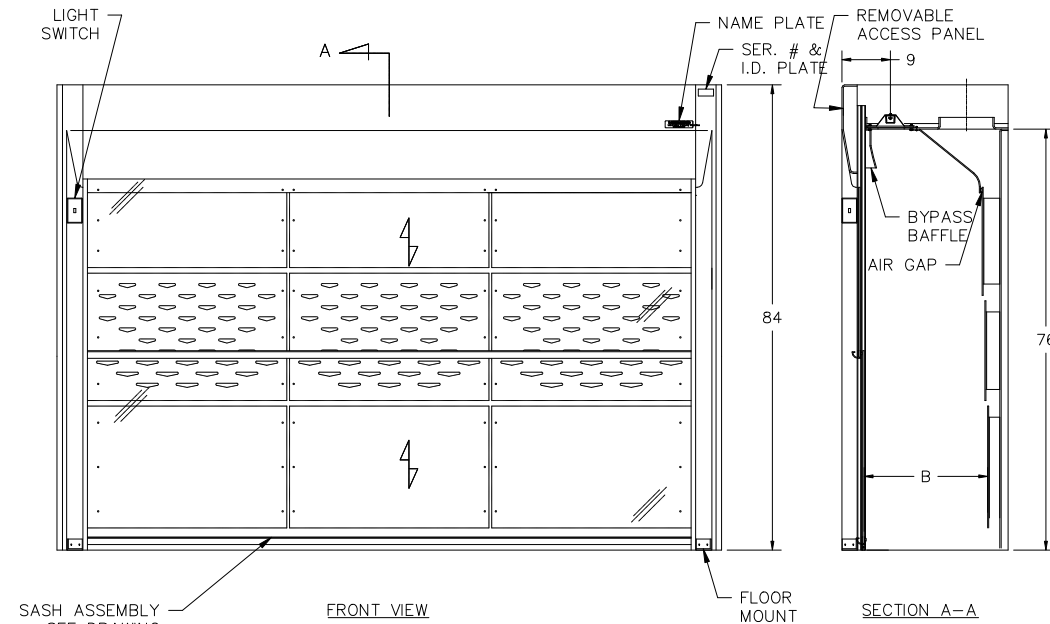
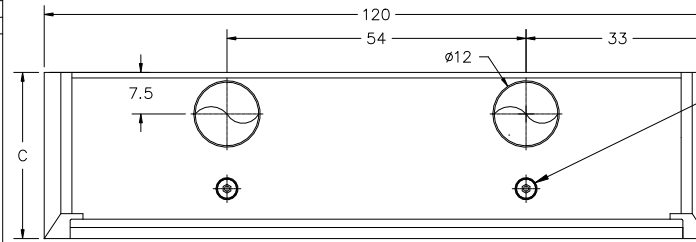
PART NUMBER	DIM "C"	DIM "D"
12012	30	22
12013	36	28
12014	48	40

ALL OF THE ABOVE HAVE EXPLOSION PROOF LIGHT FIXTURES

EXPLOSION PROOF LIGHT FIXTURE
115V, 300W, UL LISTED
CLASS I DIV II
INSTALLED BUT NOT WIRED
SWITCH NOT INCLUDED



SEE VAPOR PROOF LED LIGHT FIXTURE DETAIL

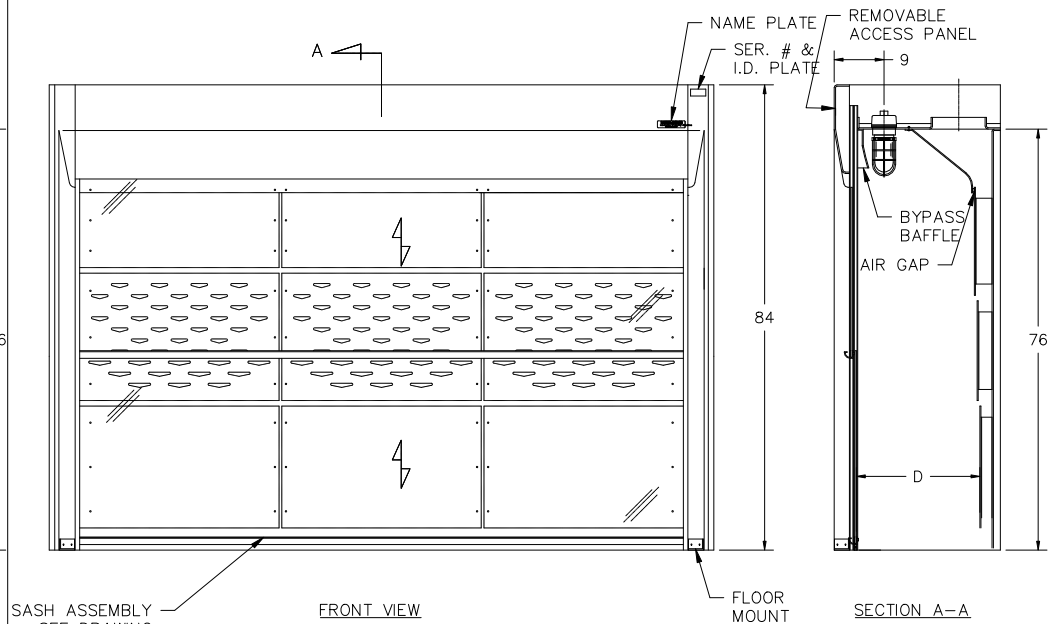


SASH ASSEMBLY
SEE DRAWING
2X 65" SASH HT
67" VIEW HT
108" VIEW WD

FRONT VIEW

FLOOR MOUNT

SECTION A-A



SASH ASSEMBLY
SEE DRAWING
2X 65" SASH HT
67" VIEW HT
108" VIEW WD

FRONT VIEW

FLOOR MOUNT

SECTION A-A

UNIFLOW FM LE FLOOR MOUNT LABORATORY FUME HOOD 120"W CAV VERTICAL SASH				
SCALE: 1" = 24"	APPROVED BY:	DATE:	REVISION:	DATE:
DRAWN BY: MEF	REP:	QUOTE No:		
DATE: 9/18/17	PROJECT MGR:	DATE:		
HEMCO Corporation		© PLANS AND DRAWINGS ARE COPYRIGHTED		DWG. NO. LE-FM-120W-VS ARCAT
711 S. POWELL INDEPENDENCE, MO 64098 PH: 816-796-2900 FAX: 816-796-3335		R.C.Hill DATE 3/2/2016		SHEET: 1 OF 1

NOTE: ALL ELECTRICAL COMPONENTS
UL AND CSA LISTED