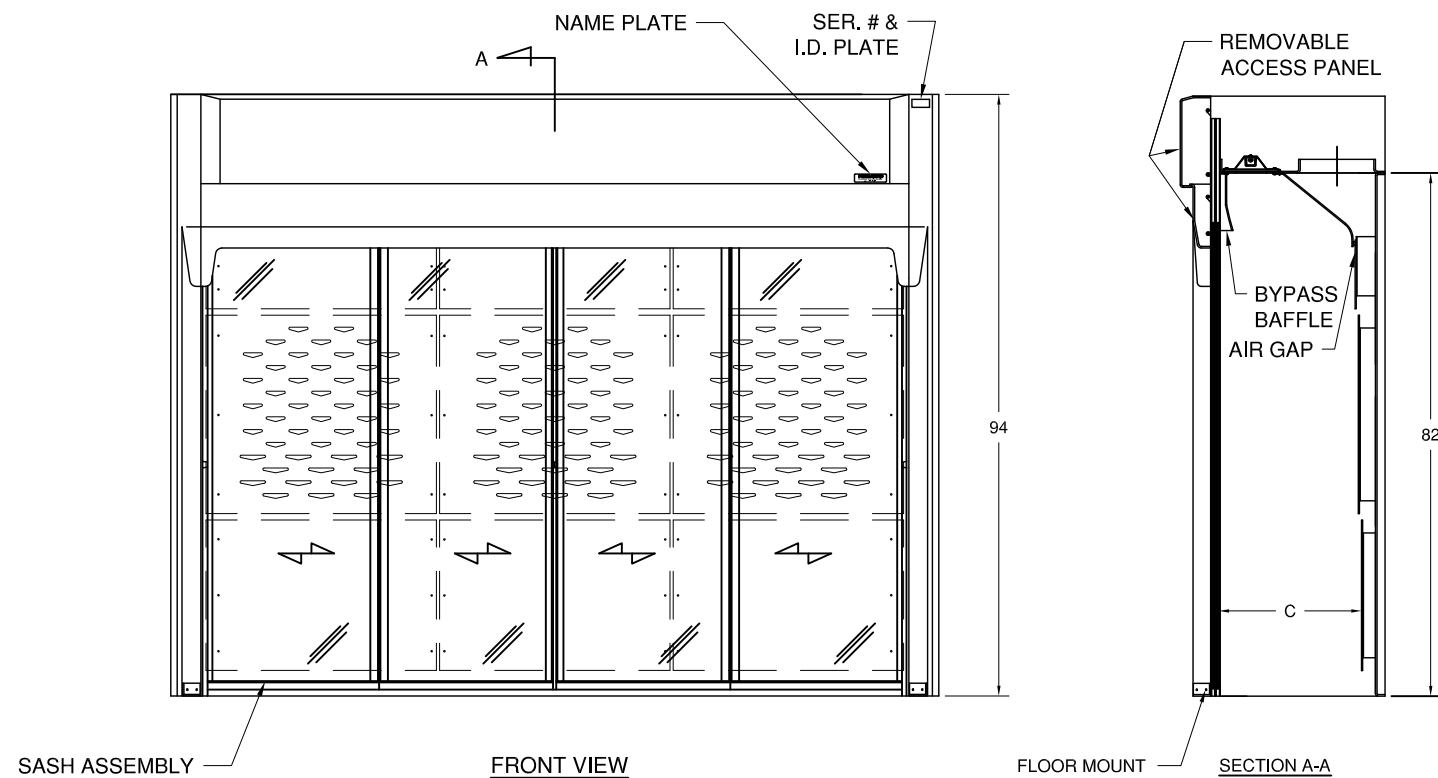
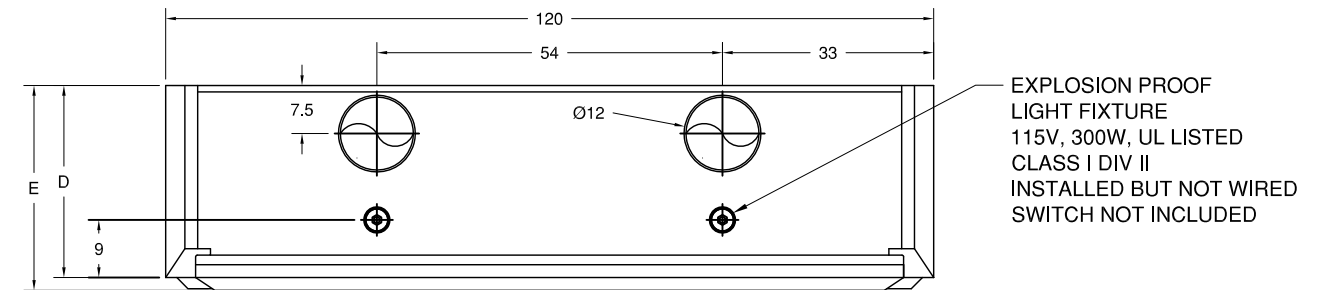
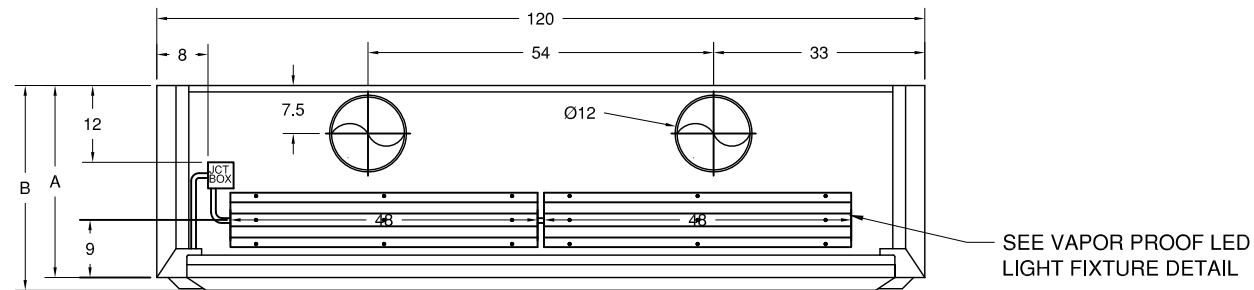


PART NUMBER	DIM "A"	DIM "B"	DIM "C"
11100	30	32	22
11102	36	38	28
11103	48	50	40
INTERNATIONAL 220V/50Hz AC			
11102	30	32	22
11103	36	38	28
11104	48	50	40

PART NUMBER	DIM "D"	DIM "E"	DIM "F"
11101	30	32	22
11104	36	38	28
11105	48	50	40

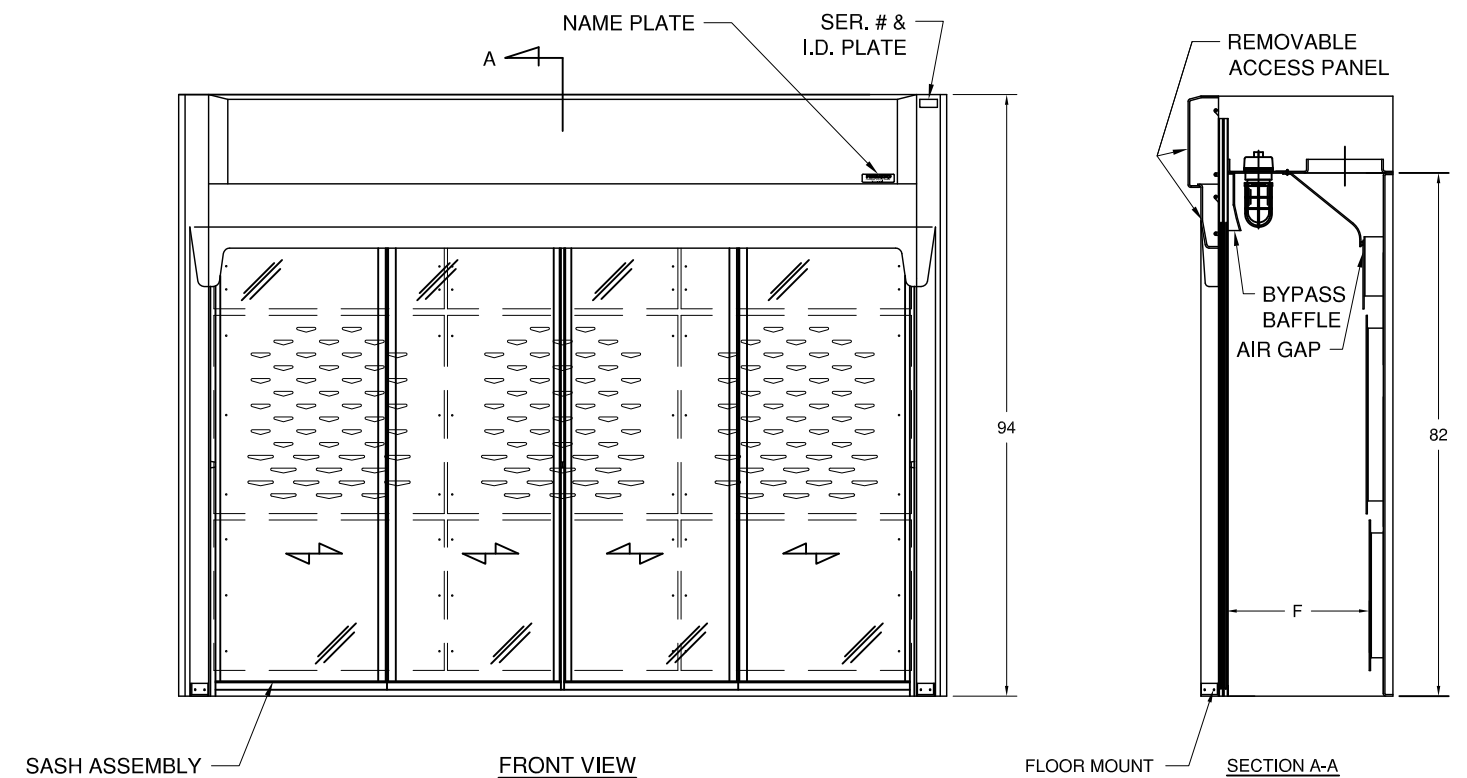
ALL OF THE ABOVE HAVE EXPLOSION  
PROOF LIGHT FIXTURES



SASH ASSEMBLY  
SEE DRAWING  
4X 74" SASH HT  
70" VIEW HT  
109" VIEW WD

FRONT VIEW

FLOOR MOUNT SECTION A-A



SASH ASSEMBLY  
SEE DRAWING  
4X 74" SASH HT  
70" VIEW HT  
109" VIEW WD

FRONT VIEW

FLOOR MOUNT SECTION A-A

**UNIFLOW FM SE FLOOR MOUNT LABORATORY FUME HOOD  
120" WITH HORIZONTAL SASH**

SCALE: 1" = 30"	APPROVED BY:	DATE:	REVISION:	DATE:
DRAWN BY: MEF	REP:	QUOTE No:		
DATE: 10/6/17	PROJECT MGR:	DATE:		

**HEMCO Corporation**

www.HEMCOcorp.com  
711 S. POWELL RD INDEPENDENCE, MO 64056  
PH:816-796-2900 FAX:816-796-3333

© PLANS AND DRAWINGS  
ARE COPYRIGHTED  
BY *R. E. Hill*  
DATE 10/9/17

DWG. NO.  
SE-FM-120W-HS ARCAT  
SHEET. 1 OF 1

NOTE: ALL ELECTRICAL COMPONENTS  
UL AND CSA LISTED