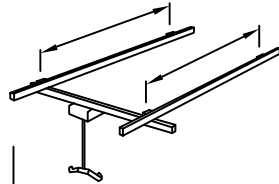
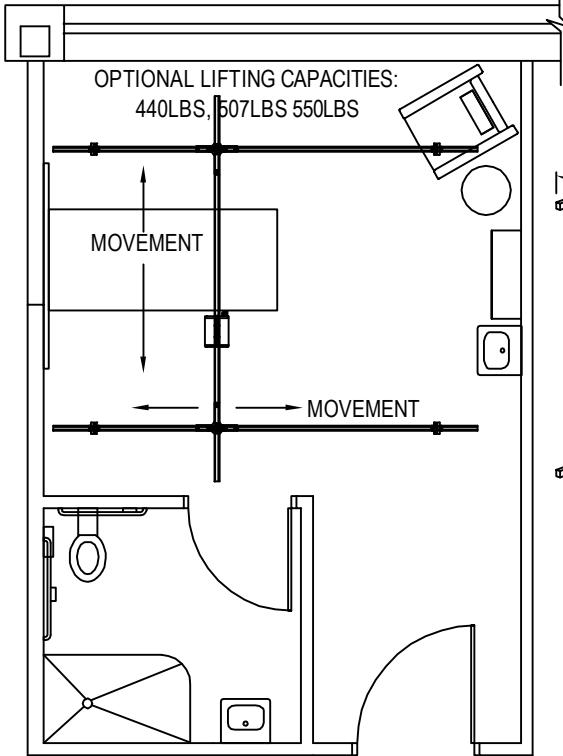




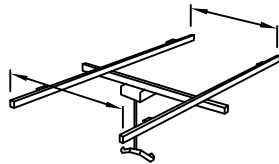
A **Hill-Rom** Company

LIKO - A HILL-ROM COMPANY
 1069 STATE ROUTE 46 EAST
 BATESVILLE, IN 47006
 PHONE: (812) 934-7777
 FAX: (812) 934-8189
 www.hill-rom.com

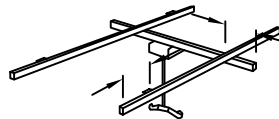


MAXIMUM (C/C) DISTANCE BETWEEN ATTACHMENT POINTS			
MAX. LOAD	200 KG / 440 LBS	230 KG / 507 LBS	250 KG / 550 LBS
H70	2200 MM / 86"	2000 MM / 78"	1500 MM / 59"
H100	3300 MM / 130"	3000 MM / 118"	2500 MM / 98"
H140	6000 MM / 236"	5500 MM / 216"	4800 MM / 189"
H160	7400 MM / 290"	6800 MM / 267"	5600 MM / 220"
H180	(ONLY FOR USE AS A SUSPENDED RAIL)		

* DISTANCE VARIES WITH RAIL PROFILE AND THE MAXIMUM LOAD FOR THE OVERHEAD SYSTEM.



MAXIMUM (C/C) DISTANCE BETWEEN PRIMARY RAILS			
MAX. LOAD	200 KG / 440 LBS	230 KG / 507 LBS	250 KG / 550 LBS
H70	2200 MM / 86"	2000 MM / 78"	1500 MM / 59"
H100	3300 MM / 130"	3000 MM / 118"	2500 MM / 98"
H140	6000 MM / 236"	5500 MM / 216"	4800 MM / 189"
H160	7400 MM / 290"	6800 MM / 267"	5600 MM / 220"
H180	(ONLY FOR USE AS A SUSPENDED RAIL)		



MAXIMUM DISTANCE FOR OVERHANG			
MAX. LOAD	200 KG / 440 LBS	230 KG / 507 LBS	250 KG / 550 LBS
H70	500 MM / 20"	450 MM / 17"	350 MM / 13"
H100	800 MM / 31"	750 MM / 29"	600 MM / 23"
H140	1000 MM / 39"	900 MM / 35"	750 MM / 29"
H160	1300 MM / 51"	1200 MM / 47"	900 MM / 35"
H180	(ONLY FOR USE AS A SUSPENDED RAIL)		

SECONDARY RAIL: DISTANCE FROM RAIL END TO THE CENTER OF THE NEAREST PRIMARY RAIL.

PRIMARY RAIL: DISTANCE FROM RAIL END TO THE CENTRE OF NEAREST ATTACHMENT POINT.

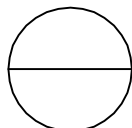
NOTES: -MEASURE BOTH ENDS OF EACH PRIMARY RAIL (4 MEASUREMENTS) AND BOTH ENDS OF THE SECONDARY RAIL (2 MEASUREMENTS).

-THE DISTANCE OF THE SECONDARY RAIL'S OVERHANG MUST NEVER EXCEED 25% OF THE DISTANCE BETWEEN THE PRIMARY RAILS.

© [[2018]] HILL-ROM SERVICES, INC. ALL RIGHTS RESERVED.

NOTES:

1. INSTALLATION TO BE COMPLETED IN ACCORDANCE WITH MANUFACTURER'S SPECIFICATIONS.
2. DO NOT SCALE DRAWING.
3. THIS DRAWING IS INTENDED FOR USE BY ARCHITECTS, ENGINEERS, CONTRACTORS, CONSULTANTS AND DESIGN PROFESSIONALS FOR PLANNING PURPOSES ONLY. THIS DRAWING MAY NOT BE USED FOR CONSTRUCTION.
4. ALL INFORMATION CONTAINED HEREIN WAS CURRENT AT THE TIME OF DEVELOPMENT BUT MUST BE REVIEWED AND APPROVED BY THE PRODUCT MANUFACTURER TO BE CONSIDERED ACCURATE.
5. CONTRACTOR'S NOTE: FOR PRODUCT AND COMPANY INFORMATION VISIT www.CADdetails.com/info AND ENTER REFERENCE NUMBER 4258-003.



TRAVERSE SYSTEM DESIGNS

STANDARD TRAVERSE SYSTEM DESIGNS: BASIC, CEILING MOUNTED