

Standard Packages

Unit Width	Slide Opening	Breakout Opening	Slide Panel Width	Sidelite Width	Rough Opening Width
8'-0" (2438)	3'-0" (914)	6'-9 1/2" (2070)	2'-0" (610)	2'-0 1/2" (622)	8'-0 1/2" (2146)
9'-0" (2743)	3'-6" (1067)	7'-9 1/2" (2375)	2'-3" (686)	2'-3 1/2" (699)	9'-0 1/2" (2756)
10'-0" (3048)	4'-0" (1219)	8'-9 1/2" (2680)	2'-6" (762)	2'-6 3/4" (781)	10'-0 1/2" (3061)
12'-0" (3658)	5'-0" (1524)	10'-9 1/2" (3289)	3'-0" (914)	3'-0 3/4" (933)	12'-0 1/2" (3670)
14'-0" (4267)	6'-0" (1829)	12'-9 1/2" (3899)	3'-6" (1067)	3'-6 3/4" (1086)	14'-0 1/2" (4280)

Unit Height: 7'-6" (2286)	Rough Opening Height: 7'-6 1/4" (2292)	Anodized Finish: Clear or Dark Bronze
Glazing: Standard unit prep'd for 1/4" (6) glass. Glass by others.		
Threshold: 1/2" (13) tall x 4" (102) wide.		

Compliant with:

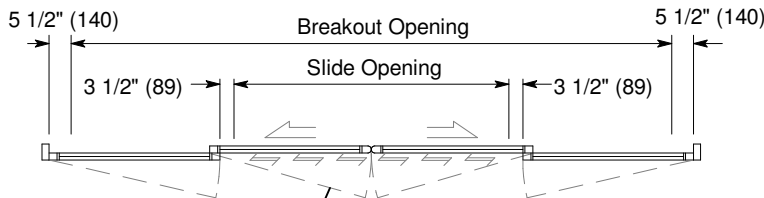
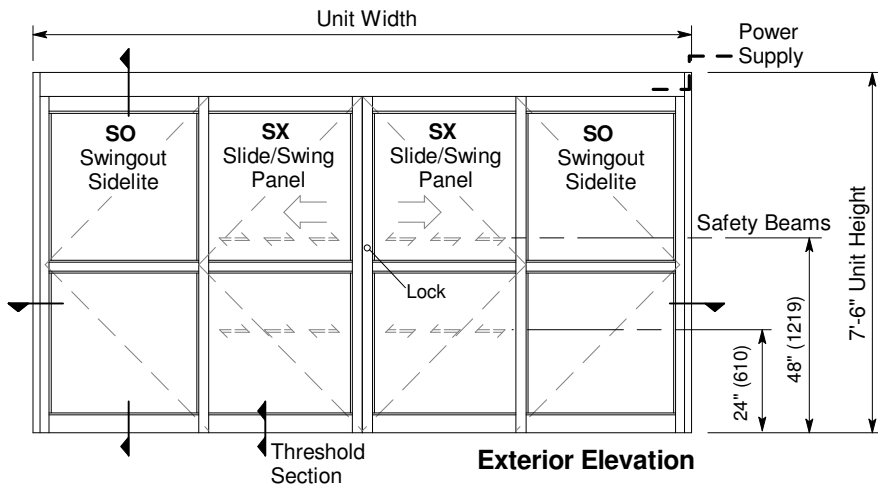
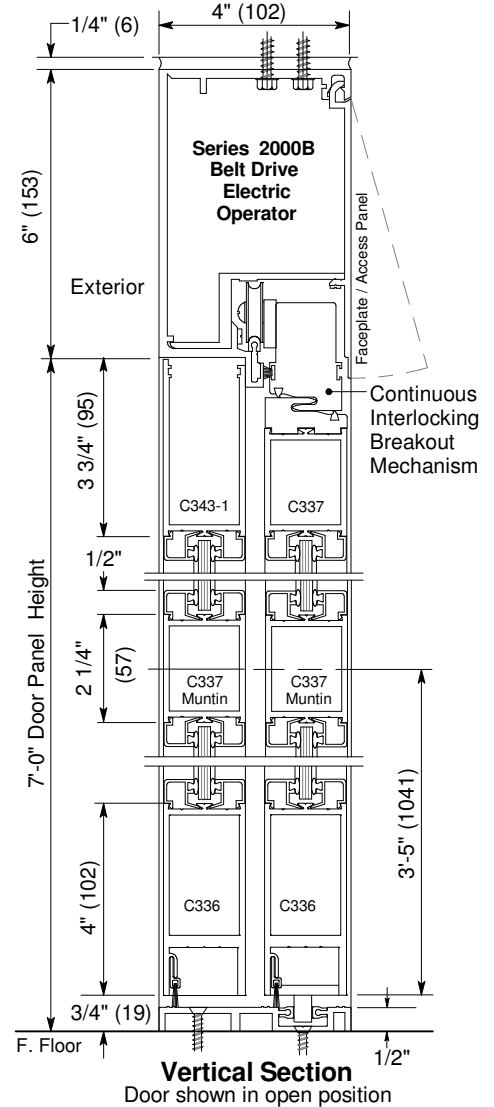
- ASTM E330-02 - Wind Load Test for Exterior Doors
- ASTM E283-04 - Air Infiltration Test for Exterior Doors

Options

- Custom unit widths between 8'-0" & 14'-0".
- Maximum unit height to 8'-0".
- Medium or wide stile (reduced slide opening).

Installation and Operation

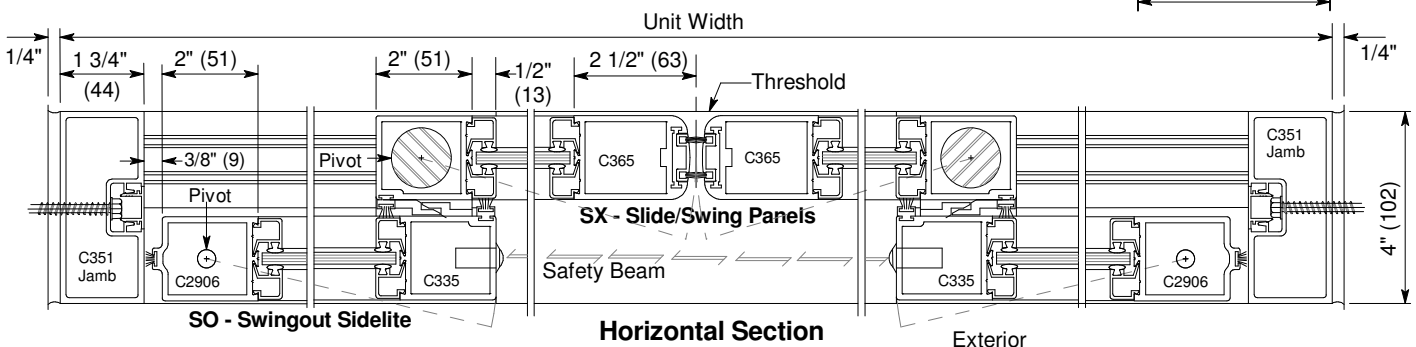
- Door perimeter mounted within rough opening with 1/4" minimum shim space at header & jambs. Finish floor not to exceed 1/4" out of level. (See page A.3)
- Electrical: Provide 120 VAC, 60 cycle, single phase, 15 amp service (in conduit) to each unit on dedicated 20 amp circuit breaker routed to header. Maximum current draw is 3.15 amps.
- Door actuated with header mounted motion sensor at interior and exterior for detection of traffic in each direction. Door closes after time delay expires. (See page A.4)
- Manual Locking: Exterior keylock and interior thumbturn provided for 4-point locking: 3/8" hex bolt locks into head and sill at keyed panel with 5/8" hookbolt latching into keeper in adjacent strike rail. 3/8" hex bolt also locks into head at adjacent (non-keyed) SX panel.



SX panels can breakout 90° from any position of slide movement with max. 50 lbf. of force at lock stile

Floor Plan

Threshold Section



Horizontal Section

Exterior