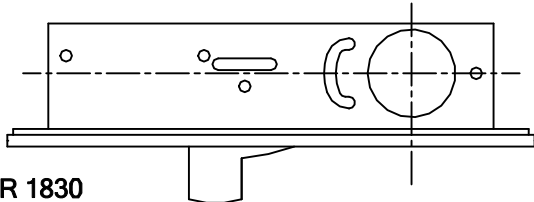


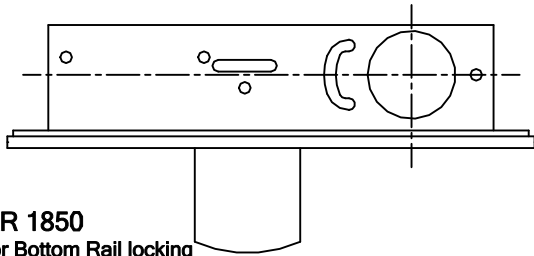
MS LOCKS

5 TYPES OF LOCKS



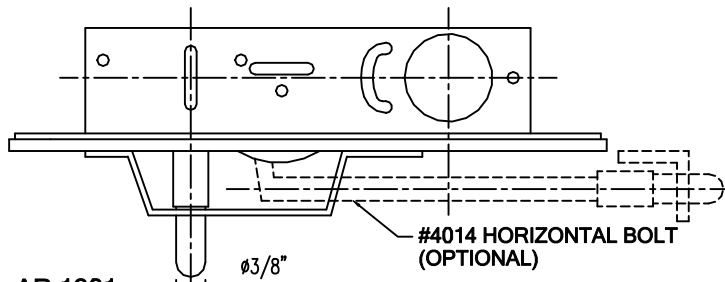
AR 1830

for Bottom Rail locking
BOLT - 3/8" x 5/8" x 2 1/8" with 5/8" throw
AR 1833 FORK TONGUE LOCK is SIMILAR.
KEEPER AVAILABLE



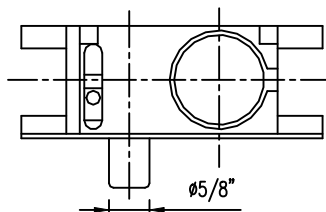
AR 1850

for Bottom Rail locking
BOLT - 5/8" x 1 3/8" x 2 7/8" with 1 3/8" throw
KEEPER AVAILABLE



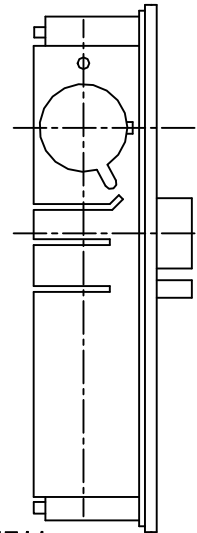
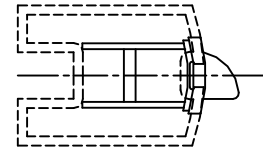
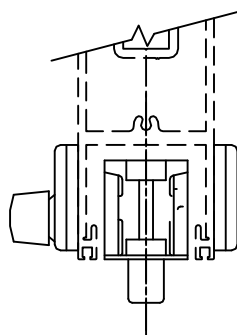
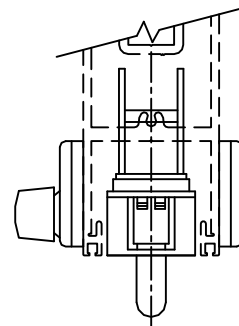
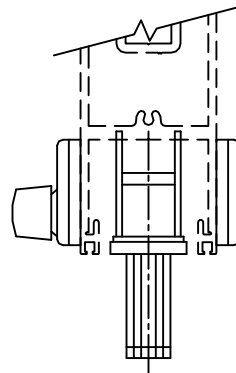
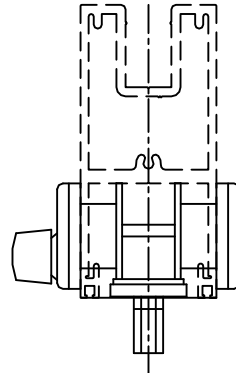
AR 1861

for Bottom Rail locking
BOLT - 3/8"Ø with 13/16" THROW.
TWO POINT LOCK - 3/8"Ø with 1 1/8" throw
DUST PROOF KEEPER AVAILABLE



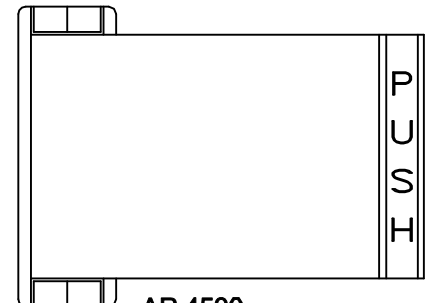
#777S

for Bottom Rail locking
BOLT - 5/8"Ø with 11/16" THROW.
DUST PROOF KEEPER AVAILABLE



AR 4711

HEAVY DUTY DEAD LATCH
for STILES and LOCK HOUSINGS
LATCH BOLT - 5/8"x 1" with 1/2" throw
HANDING REVERSIBLE
AUXILIARY BOLT - DEADLOCKS
LATCH BOLT when retracted



AR 4590

LATCH PADDLE DEVICE for AR 4711 LOCK.
PADDLE - EXTRUDED ALUMINUM
SATIN ANODIZED, DARK BRONZE or
BLACK HARD COLOUR
HANDING - PUSH LEFT (02); PUSH RIGHT (04);
PULL LEFT (01); PULL RIGHT (03).