

## InKan Hat pull handle (1/16" (16ga) THK. Formed)

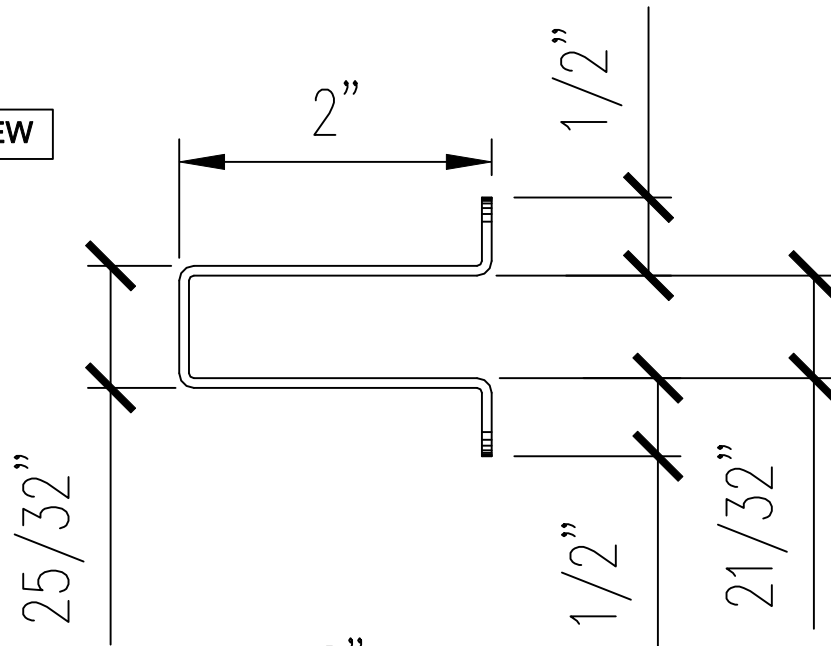
for 1/2", 5/8" and 3/4" GLASS

MATERIAL: BRASS, BRONZE OR STAINLESS STEEL.

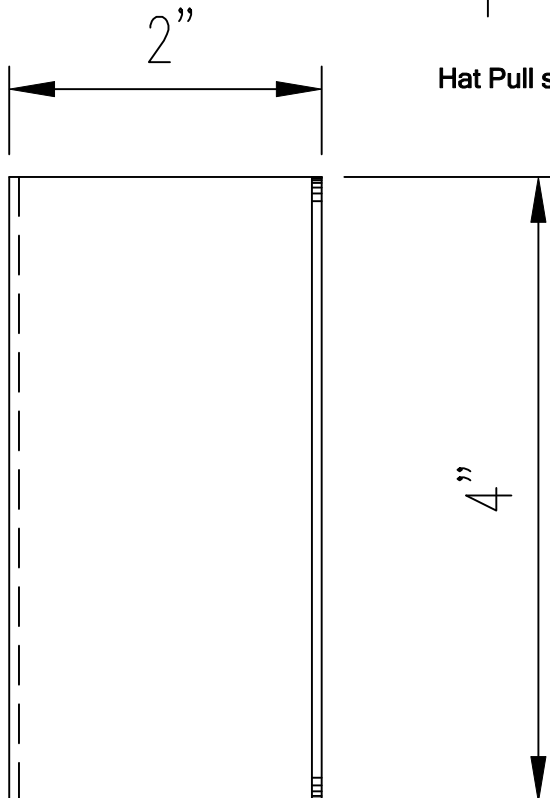
FINISH: BRUSHED (BLEND 'S') OR MIRROR FINISH.

PULL TO BE SILICONE TO GLASS

PLAN VIEW



ELEVATION VIEW



Hat Pull shown for 5/8" THK. Glass