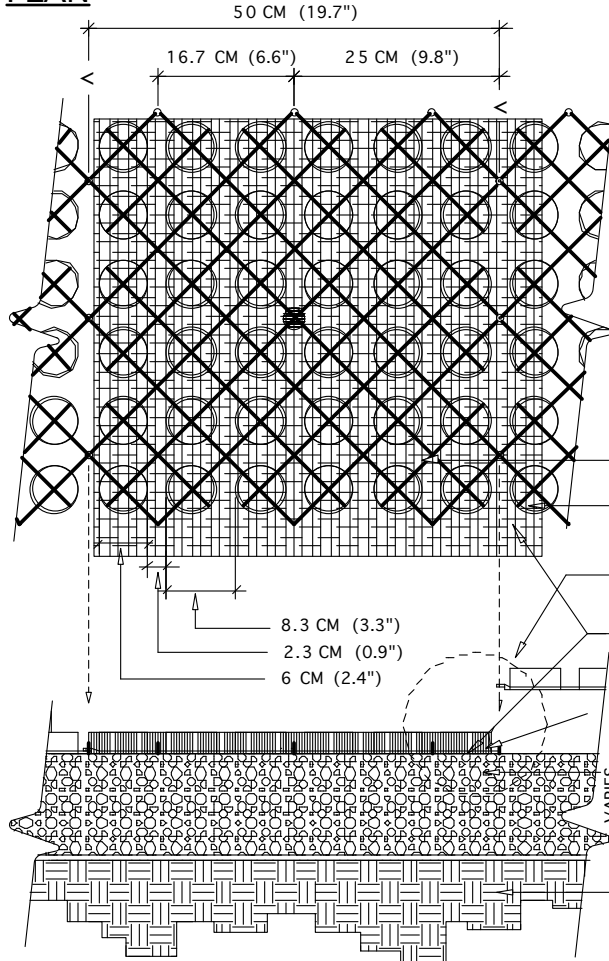


NOTES: TURN OFF DOFF LAYER PRIOR TO PLOTTING.
 HATCH DOFF HATCH LIMITS IN PLAN & ENLARGEMENT TO MATCH YOUR PLOT CONFIG.

PLAN



SPECIFICATIONS

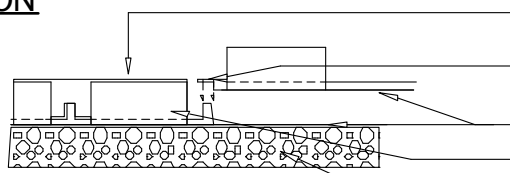
UNITS
 UNIT SIZE - 50 CM X 50 CM X 2.5 CM
 (20" X 20" X 1")
 AVAILABLE IN 9 STANDARD ROLL SIZES

UNIT WEIGHT - 538 GRAMS (19 OZ.)
 OR 2.2 KG (4.8 POUNDS)
 STRENGTH - 402 KG/CM² (5720 PSI)
 COLOR - BLACK (STANDARD)
 RESIN - 100% POST-CONSUMER
 RECYCLED HDPE/LDPE

FABRIC
 WEIGHT - 3.5 OZ/SY (120 GM/M²)
 TENSILE - 120 LB/FT² (585 KG/M²)
 FLOW - 275 GAL/MIN/SF (11,200 L/MIN/M²)
 OPTIONS - CUSTOM FABRIC TO 6 OZ
 AVAILABLE.

- GRAVELPAVE2
- ADJACENT GRAVELPAVE2
- SEE ENLARGEMENT BELOW
- FILTER FABRIC ATTACHED TO
BOTTOM OF GRAVELPAVE2
- GRAVELPAVE2 FILLED WITH 3/16" TO 3/8"
ANGULAR GRAVEL, UNIFORM SIZE, WASHED
- COMPACTED SANDY GRAVEL ROAD BASE
- 95% MODIFIED PROCTOR DENSITY
- COMPACTED SUBGRADE

SECTION



ENLARGEMENT

- TOP OF GRAVEL
- GRAVELPAVE2 ATTACH WITH
SNAP FIT FASTENERS
- FILTER FABRIC - OVERLAPPING JOINTS
- FILL RING SECTION WITH
3/16" TO 3/8" ANGULAR GRAVEL, UNIFORM SIZE, WASHED
- COMPACTED SANDY GRAVEL
BASE COURSE

TYPICAL GRAVELPAVE2 DETAIL

NOT TO SCALE

CHOOSE THIS PRODUCT FOR REINFORCING GRAVEL WEARING SURFACES

Invisible
Structures, Inc.
Gvdet.dwg

1600 Jackson Street, SUITE 310
 GOLDEN, COLORADO 80401
 800-233-1510 OR 303-233-8383
 FAX: 303-233-8282
 Version 05/10