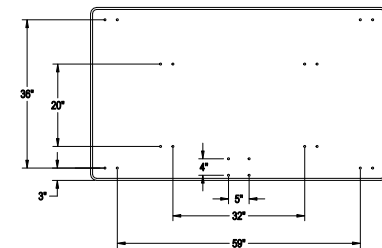


FRONT



REAR

Backboard shall be 42" x 72" rectangular fiberglass. The front and rear shell shall be gel coated fiberglass that is a minimum of 1/8" thick. The front and rear shall be permanently bonded together around a solid fiber core to create a solid backboard with an overall thickness of 1 1/2". Sixteen threaded steel inserts are molded into the rear shell to facilitate mounting. These inserts shall permit mounting to all 36" x 62" and 20" x 35" support structures. The front and back of the backboard shall be white fiberglass with an official orange shooter's square and border shall be permanently molded into the playing surface. Silk screened or vinyl adhesive applied border and shooter's square shall not be acceptable substitutions. Backboard shall accept rims with a 5" x 4" hole pattern and be manufactured in the USA. Backboard shall carry a 10-year limited warranty. Installation to be completed in accordance with manufacturer's instructions. Do not scale drawings. Board shall weigh approximately 160#.



PRODUCT SPECIFICATION

BA465 TUFFGLASS RECTANGULAR FIBERGLASS BACKBOARD

REVISED 8/1/17

603 L Street, Lincoln, NE 68508 - Phone: (800) 637-7968 - Fax: (800) 638-0698 - www.ipibyison.com - sales@ipibyison.com