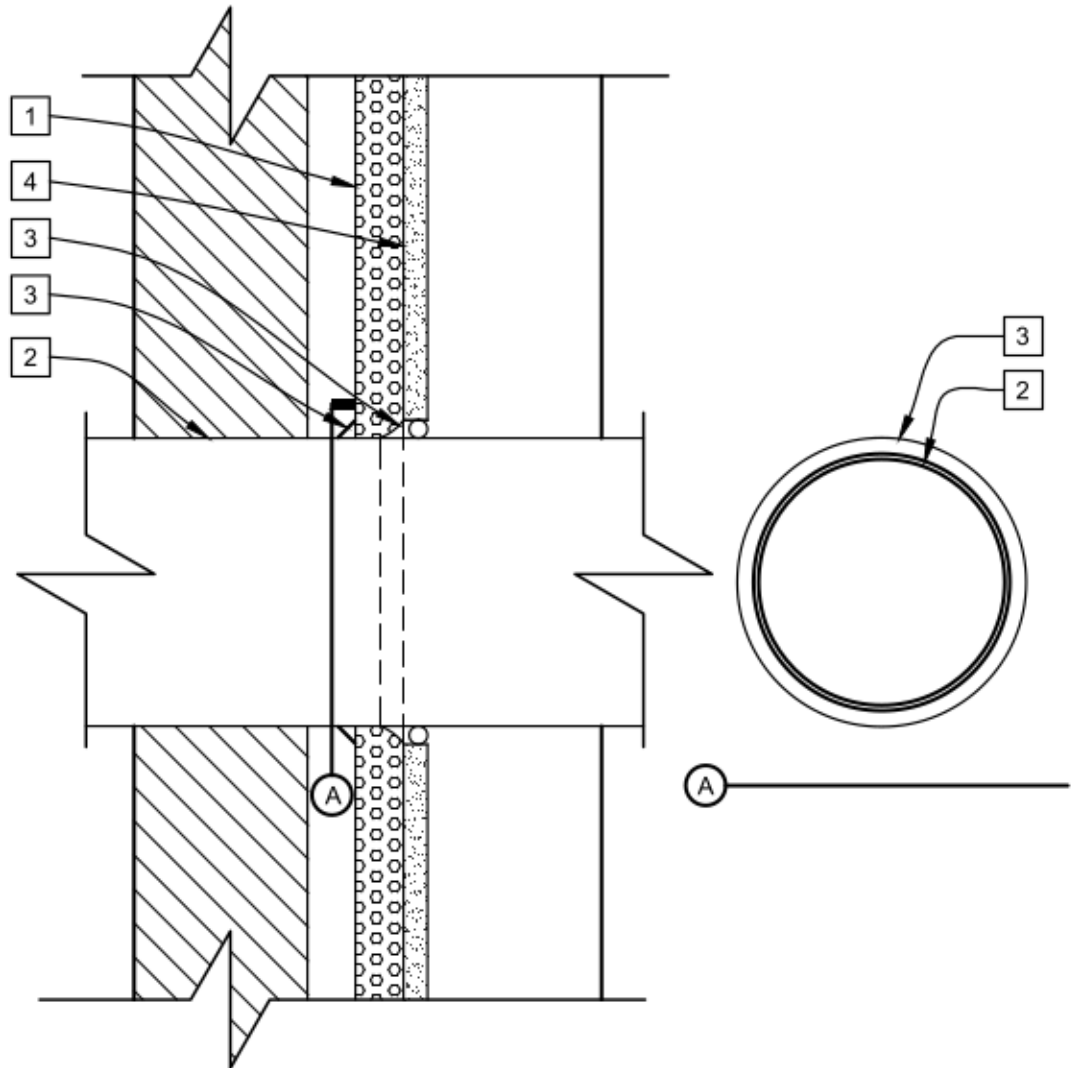


# LEGEND

- 1 AP™ FOIL FACED SHEATHING
- 2 PIPE
- 3 APPROVED SEALANT
- 4 OPTIONAL EXTERIOR SHEATHING



## PENETRATIONS - AMBIENT TEMPERATURE

SKETCH NO.

**AP9**

SCALE

3"=1'-0"

ISSUE DATE

06/27/13

REV. NO.

CAD FILE:

PENETRATIONS.dwg

Johns Manville ("JM") manufactures closed-cell polyisocyanurate foam sheathing insulation products and offer this general conceptual information to you as a courtesy. This complimentary assistance is not to be used or relied upon by anyone as a substitute for professional engineering design and documentation required by building code, contract, or applicable law. By accepting these comments you agree they do not constitute any representations, endorsements of, or an assumption by JM of any liability for either the adequacy of the design of this building or any other material not supplied by JM.

