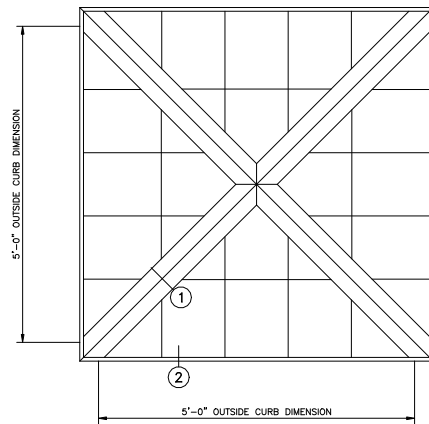
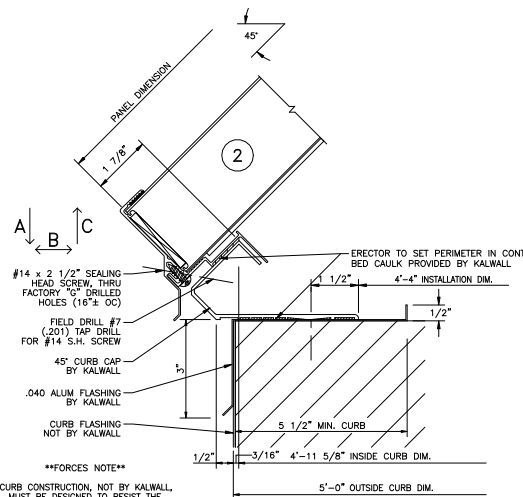
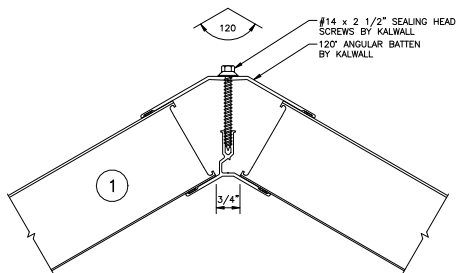


45° - 5'-0" PYRAMID

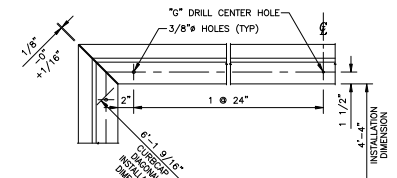


PYRAMID PLAN
NOTE: SHIPPED IN 1 UNIT

45° SLOPE
45° SLOPE



****FORCES NOTE****
CURB CONSTRUCTION, NOT BY KALWALL, MUST BE DESIGNED TO RESIST THE FOLLOWING FORCES PRODUCED BY
A PSF LIVE LOAD.
A PSF WIND LOAD.
A PSF SNOW LOAD.
A PSF DRIFT LOAD.
A: _____ LBS/SIDE
B: _____ LBS/SIDE
C: _____ LBS/SIDE



CURB CAP PLAN

SUGGESTED FASTENING OF CURB CAP TO CURB		
CURB TYPE	FASTENER *	SPACING
WOOD	#14 R.H. S.S. - 4" LG.	24" O.C.
STEEL	#14 R.H. S.S. - 1" LG.	24" O.C.
CONCRETE	1/4" x 3 1/4" POWER STUD CAT #7404	24" O.C.

*NOT SUPPLIED BY KALWALL UNLESS INSTALLED BY KALWALL.
ALL FASTENERS TO BE IN HOLE 1/8" LARGER THAN FASTENER DIA.
HOLE AT CENTER OF CURB TO BE SAME DIA. AS FASTENER

KALWALL®
high performance translucent building systems