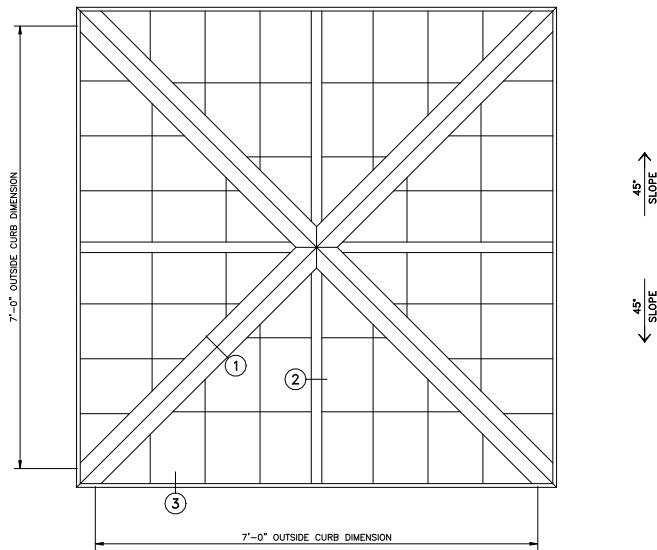
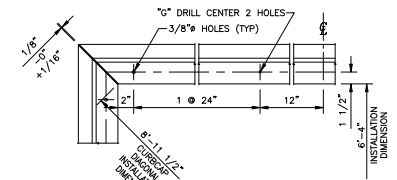


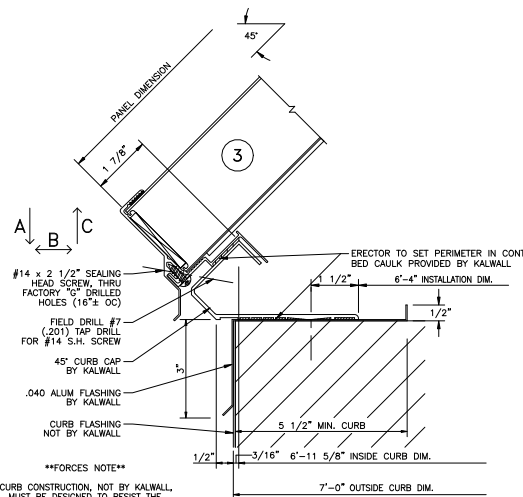
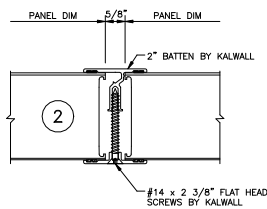
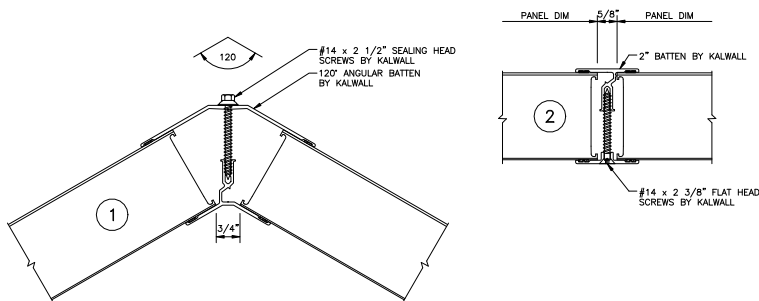
# 45° - 7'-0" PYRAMID



**PYRAMID PLAN**  
NOTE: SHIPPED IN 1 UNIT



**CURB CAP PLAN**



**\*\*FORCES NOTE\*\***  
CURB CONSTRUCTION, NOT BY KALWALL, MUST BE DESIGNED TO RESIST THE FOLLOWING FORCES PRODUCED BY:  
A: PSF LIVE LOAD.  
A: PSF WIND LOAD.  
A: PSF SNOW LOAD.  
A: PSF DRIFT LOAD.  
A: \_\_\_\_\_ LBS/SIDE  
B: \_\_\_\_\_ LBS/SIDE  
C: \_\_\_\_\_ LBS/SIDE

SUGGESTED FASTENING OF CURB CAP TO CURB		
CURB TYPE	FASTENER *	SPACING
WOOD	#14 R.H. S.S. - 4" LG.	24" O.C.
STEEL	#14 R.H. S.S. - 1" LG.	24" O.C.
CONCRETE	1/4" x 3 1/4" POWER STUD CAT #7404	24" O.C.

\*NOT SUPPLIED BY KALWALL UNLESS INSTALLED BY KALWALL.  
ALL FASTENERS TO BE IN HOLE 1/8" LARGER THAN FASTENER DIA.  
HOLE AT CENTER OF CURB TO BE SAME DIA. AS FASTENER

**KALWALL®**  
high performance translucent building systems