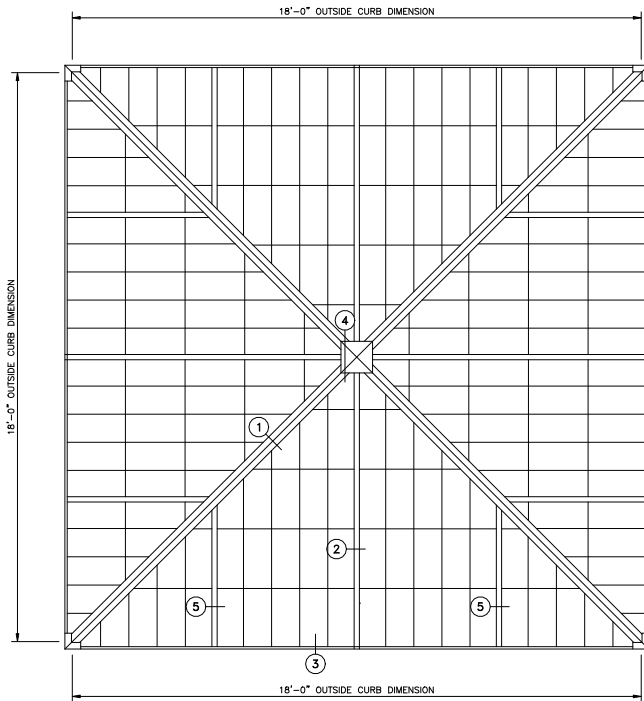
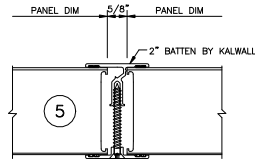
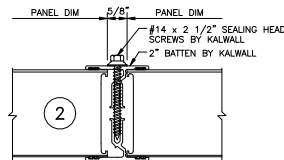
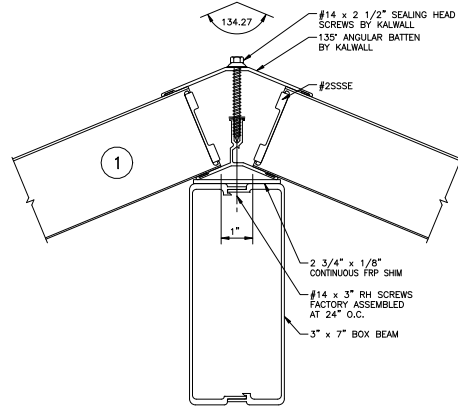


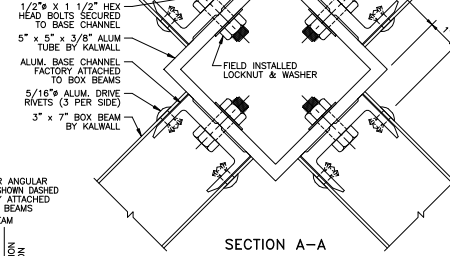
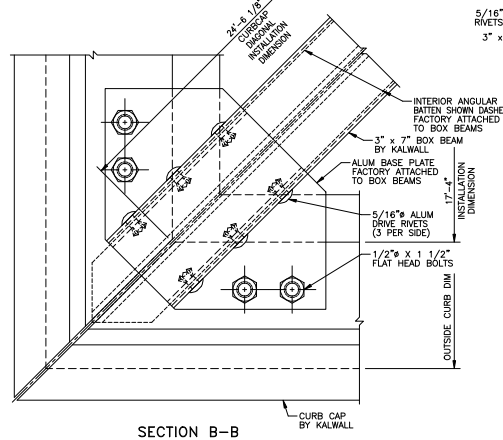
# 33.33° - 18'-0" PYRAMID



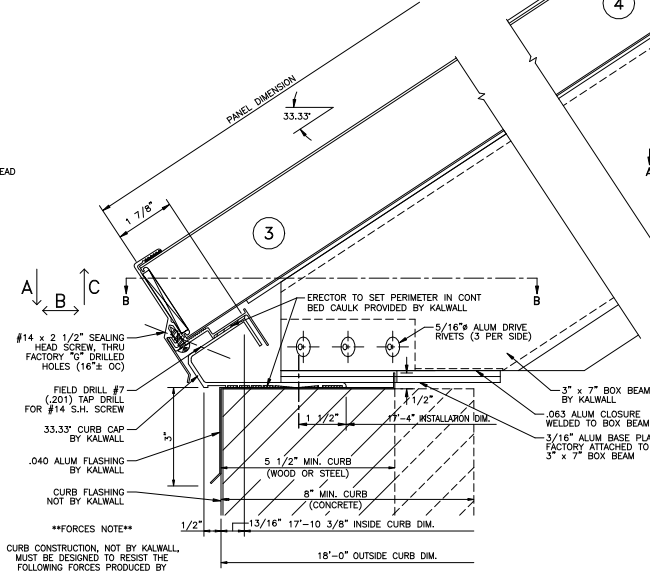
**PYRAMID PLAN**  
NOTE: SHIPPED IN 8 UNITS



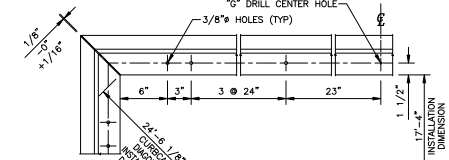
33.33° SLOPE  
33.33° SLOPE



#14 x 1 inch SH SCREWS BY KALWALL (THROUGH VERTICAL BATTENS) CONT. KALSEAL BEAD BY KALWALL



**\*\*FORCES NOTE\*\***  
CURB CONSTRUCTION, NOT BY KALWALL, MUST BE DESIGNED TO RESIST THE FOLLOWING FORCES PRODUCED BY:  
A: PSF LIVE LOAD  
A: PSF WIND LOAD  
A: PSF SNOW LOAD  
A: PSF DRIFT LOAD.  
A: \_\_\_\_\_ LBS/SIDE  
B: \_\_\_\_\_ LBS/SIDE  
C: \_\_\_\_\_ LBS/SIDE



**CURB CAP PLAN**

CURB TYPE	FASTENER *	SPACING
WOOD	#14 R.H. S.S. - 4" LG.	24" O.C.
STEEL	#14 R.H. S.S. - 1" LG.	24" O.C.
CONCRETE	1/4" x 3 1/4" POWER STUD CAT #7404	24" O.C.

\*NOT SUPPLIED BY KALWALL UNLESS INSTALLED BY KALWALL.  
ALL FASTENERS TO BE IN HOLE 1/8" LARGER THAN FASTENER DIA.  
HOLE AT CENTER OF CURB TO BE SAME DIA. AS FASTENER

**KALWALL®**  
high performance translucent building systems