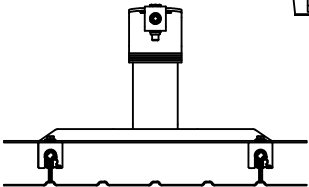
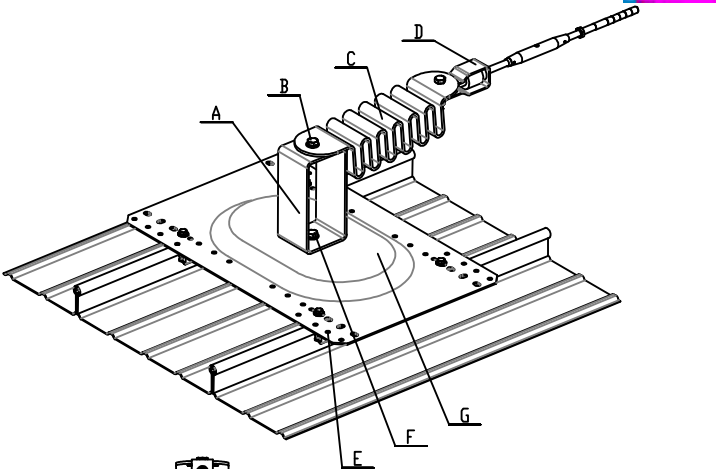


Technical Datasheet No: 0006
STANDING SEAM ROOF - TENSIONER ASSEMBLY



A	LAWL2STEX - KL2STEX - KL2 METAL ROOF EXTREMITY POST
B	LAWL2450 - LA-BOLT40 - M12 X 40MM HEX HEAD SET SCREW M4-80 C/D
C	LAWL2450 - WASHER2450 - M12 X 34 FLAT WASHER M4-70 C/D
D	LAWL2450 - NYLOCK255 - M12 NYLOC NUT GRADE M4-80 C/D
E	LAWL2450 - KEELLINE ABSORBER
F	LAWL2450 - TENSIO - KEELLINE TENSIONER ASSEMBLY
G	LAWL2450 - LA-SWITCH - KEELLINE SWAGELESS TENSIONER UNIT
H	LAWL2450 - Z5 STANDING SEAM CLAMP PACK OF 4
I	LAWL2450 - LA-BOLT20 - M12 X 20MM HEX HEAD SET SCREW M4-80 ST/ST
J	LAWL2450 - M12 SPRING WASHER M4-70 C/D
K	LAWL2450 - WASHER2450 - M12 X 34 FLAT WASHER M4-70 C/D
L	LAWL2450 - SP310-BASE PLATE FOR PROFILED ROOF
M	LAWL2450 - SUS10 - USA BASE PLATE FOR ROOF KEELLINE

APPLICATION
The Energy Absorber is designed to dissipate the energy generated throughout the system and reduce the end loadings to below 2248lbs.The pretension indicator is a way of instantly adjusting and checking the correct tension of the life line cable.

COMPONENT SPECIFICATION

Material	Stainless Steel / Steel Components Throughout
Finish	Electropolish / Zinc Plated
Weight	

Issue Date: 27/09/2016 Issue No: 5

