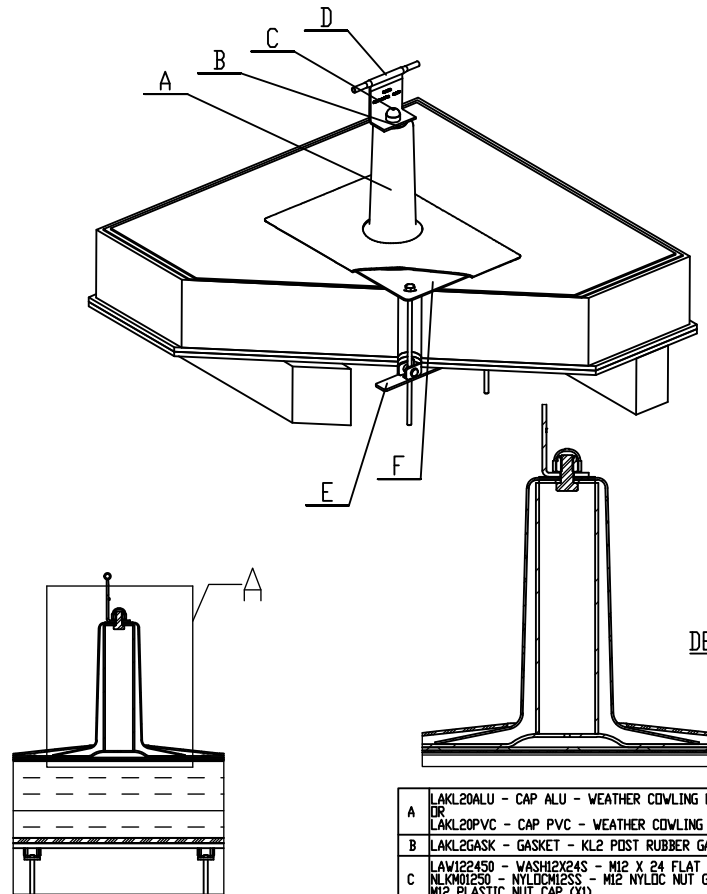


# Technical Datasheet No: 0049 FLAT ROOF - INTERMEDIATE ASSEMBLY - LARGE CAPS



A	LAKL20ALU - CAP ALU - WEATHER COWLING NON COATED OR LAKL20PVC - CAP PVC - WEATHER COWLING PVC COATED
B	LAKL20GASK - GASKET - KL2 POST RUBBER GASKET
C	LAV122450 - WASH12X24S - M12 X 24 FLAT WASHER A4-70 (X1) NLK001250 - NYLDC0125S - M12 NYLDC NUT GRADE A4-80 (X1) M12 PLASTIC NUT CAP (X1)
D	LAIN0010 - INTW010 - KEELINE INTERMEDIATE BRACKET FOR STRUCTURES OR LAINTEXT0 - INTEW010 KEELINE EXTENDED INT BRACKET FOR STRUCTURES
E	LAKL2TOG4 - KL2TOG4 - KL2 TOGGLES (PACK OF 4)
F	LAKL2POST - MEM-POST - KEELINE MEMBRANE POST

## APPLICATION

Allow the Traveller to pass over the brackets without detaching from the system. Maximum span of 39' between Intermediate Brackets.

## COMPONENT SPECIFICATION

Material	Stainless Steel / Steel Components Throughout
Finish	Electropolish / Zinc Plated
Weight	

Issue Date: 27/09/2016

Issue No: 7

