

Drawing No. ES B417B

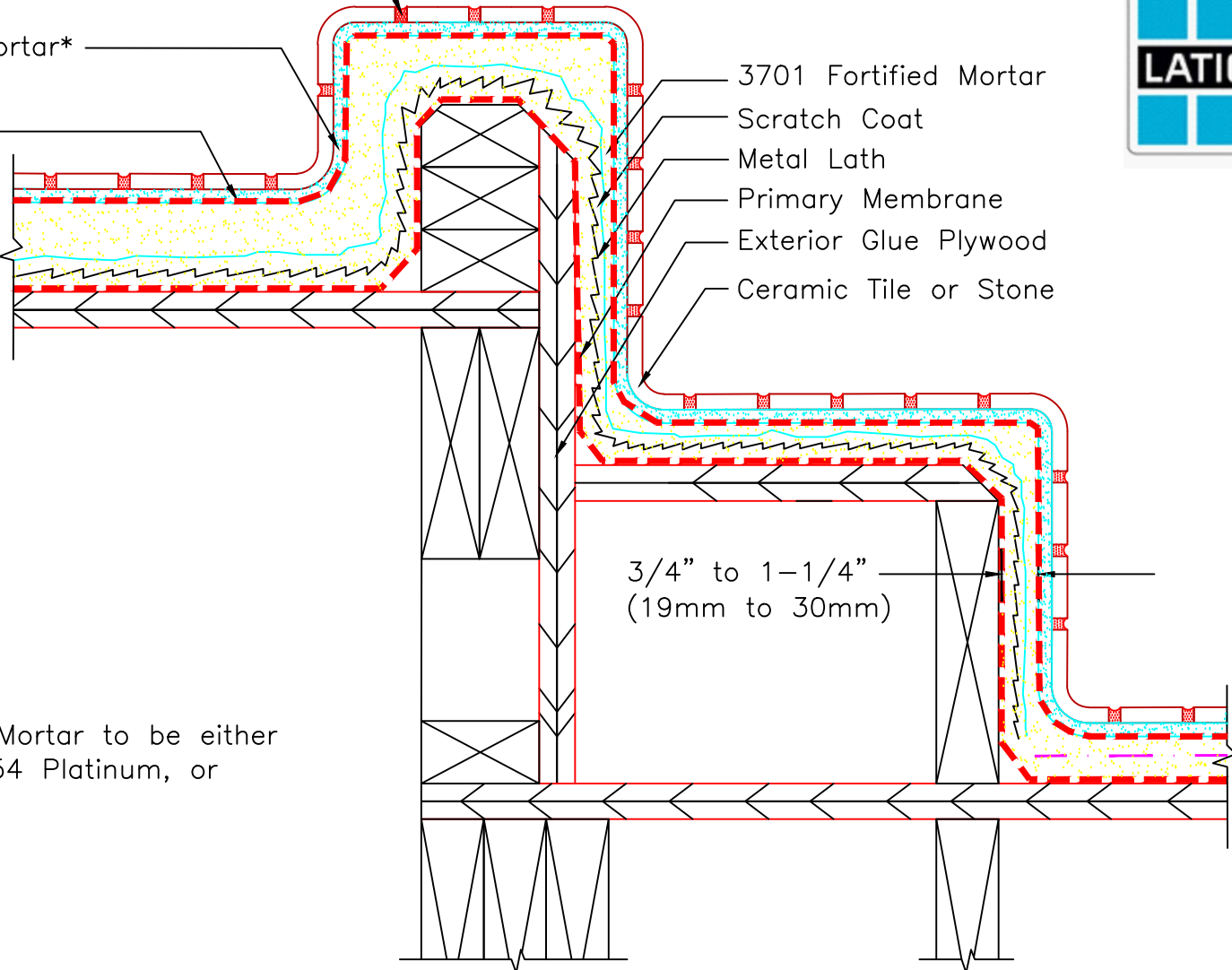


SPECTRALOCK® PRO Premium Grout; or,
PERMACOLOR® Select

Tile Installation Mortar*

HYDRO BAN®

- 3701 Fortified Mortar
- Scratch Coat
- Metal Lath
- Primary Membrane
- Exterior Glue Plywood
- Ceramic Tile or Stone



3/4" to 1-1/4"
(19mm to 30mm)

*Tile Installation Mortar to be either
257 TITANIUM, 254 Platinum, or
MULTIMAX LITE.

Revision Date: 1/20 Scale: N.T.S.

AS A PROFESSIONAL COURTESY, LATICRETE OFFERS TECHNICAL SERVICES FREE OF CHARGE. THE USER MAINTAINS ALL RESPONSIBILITY FOR VERIFYING THE APPLICABILITY AND SUITABILITY OF THE TECHNICAL SERVICE OR INFORMATION PROVIDED.

(C)2020 LATICRETE INTERNATIONAL, INC. ALL RIGHTS RESERVED. THE RIGHT TO UTILIZE LATICRETE DETAILS FOR COMMERCIAL PURPOSES IS GRANTED EXCLUSIVELY TO CONTRACTORS, ARCHITECTS, QUANTITY SURVEYORS, ENGINEERS, AND SPECIFICATIONS WRITERS. ALL TRADEMARKS SHOWN ARE THE INTELLECTUAL PROPERTIES OF THEIR RESPECTIVE OWNERS.