

Drawing No. ES B417C



SPECTRALOCK® PRO Premium Grout; or,
PERMACOLOR® Select

Ceramic Tile or Stone

Tile Installation Mortar*

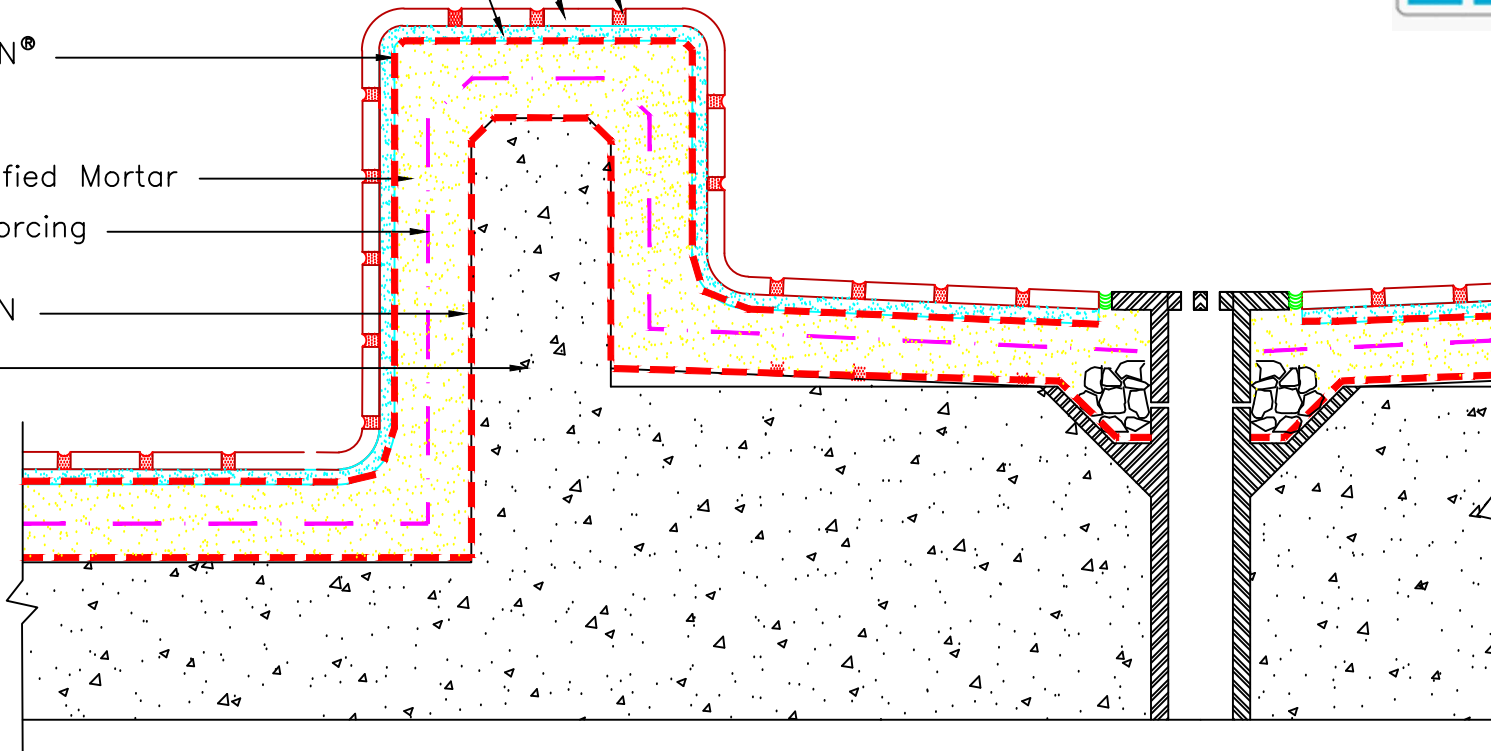
HYDRO BAN®

3701 Fortified Mortar

Wire Reinforcing

HYDRO BAN

Concrete



*Tile Installation Mortar to be either 257 TITANIUM, 254 Platinum, MULTIMAX LITE.

NOTE: Pre-formed Curbs Acceptable.

Revision Date: 1/20

Scale: N.T.S.

AS A PROFESSIONAL COURTESY, LATICRETE OFFERS TECHNICAL SERVICES FREE OF CHARGE. THE USER MAINTAINS ALL RESPONSIBILITY FOR VERIFYING THE APPLICABILITY AND SUITABILITY OF THE TECHNICAL SERVICE OR INFORMATION PROVIDED.

(C)2020 LATICRETE INTERNATIONAL, INC. ALL RIGHTS RESERVED. THE RIGHT TO UTILIZE LATICRETE DETAILS FOR COMMERCIAL PURPOSES IS GRANTED EXCLUSIVELY TO CONTRACTORS, ARCHITECTS, QUANTITY SURVEYORS, ENGINEERS, AND SPECIFICATIONS WRITERS. ALL TRADEMARKS SHOWN ARE THE INTELLECTUAL PROPERTIES OF THEIR RESPECTIVE OWNERS.