



Drawing No. ES B440

Shim as Required
 Cleavage Membrane (required)
 Metal Lath
 3701 Fortified Mortar (one coat method)
 3/8" (9.5mm) min. to 3/4" (19mm) max.

SPECTRALOCK® PRO Premium Grout;
 or, PERMACOLOR® Select

HYDRO BAN®

Tile Installation Mortar*

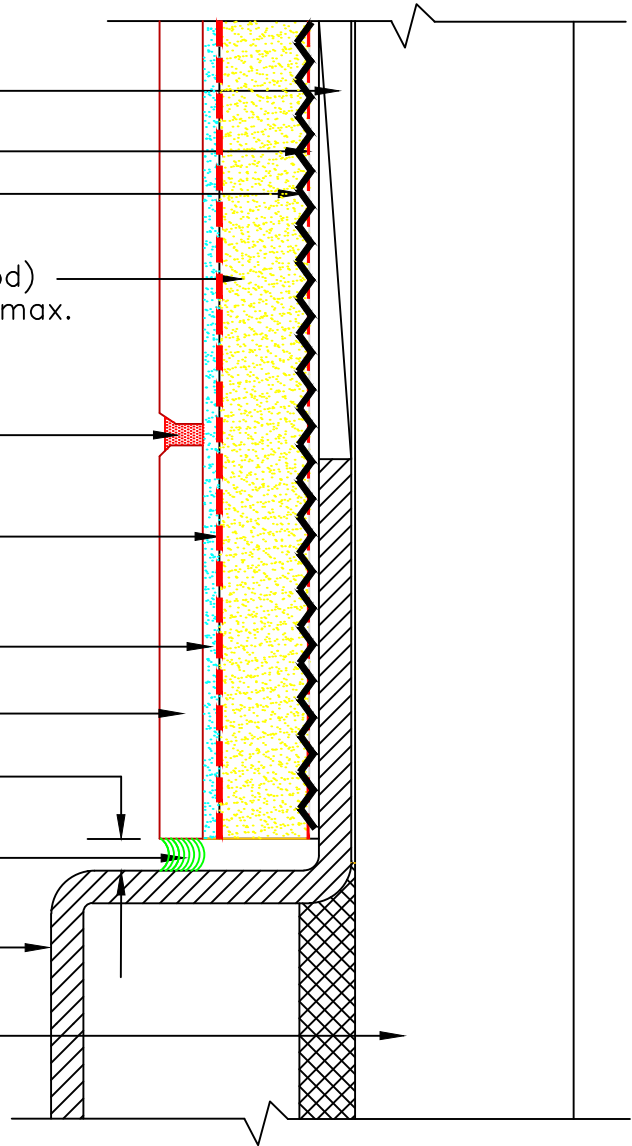
Ceramic Tile or Stone

1/4" (6mm) Space

LATASIL™

Bathtub

Steel or Wood Stud



*Tile Installation Mortar to be either 257 TITANIUM, 254 Platinum, or MULTIMAX LITE.

Revision Date: 1/20

Scale: N.T.S.

AS A PROFESSIONAL COURTESY, LATICRETE OFFERS TECHNICAL SERVICES FREE OF CHARGE. THE USER MAINTAINS ALL RESPONSIBILITY FOR VERIFYING THE APPLICABILITY AND SUITABILITY OF THE TECHNICAL SERVICE OR INFORMATION PROVIDED.

(C)2020 LATICRETE INTERNATIONAL, INC. ALL RIGHTS RESERVED. THE RIGHT TO UTILIZE LATICRETE DETAILS FOR COMMERCIAL PURPOSES IS GRANTED EXCLUSIVELY TO CONTRACTORS, ARCHITECTS, QUANTITY SURVEYORS, ENGINEERS, AND SPECIFICATIONS WRITERS. ALL TRADEMARKS SHOWN ARE THE INTELLECTUAL PROPERTIES OF THEIR RESPECTIVE OWNERS.