



# Drawing No. ES F145

Exterior Glue Plywood  
3/4" (19mm) or 23/32" (18mm)

Cleavage Membrane  
4 Mil Polyethylene or 15 lb. Builder's Felt

3.4# Galvanized Diamond Wire Metal Lath

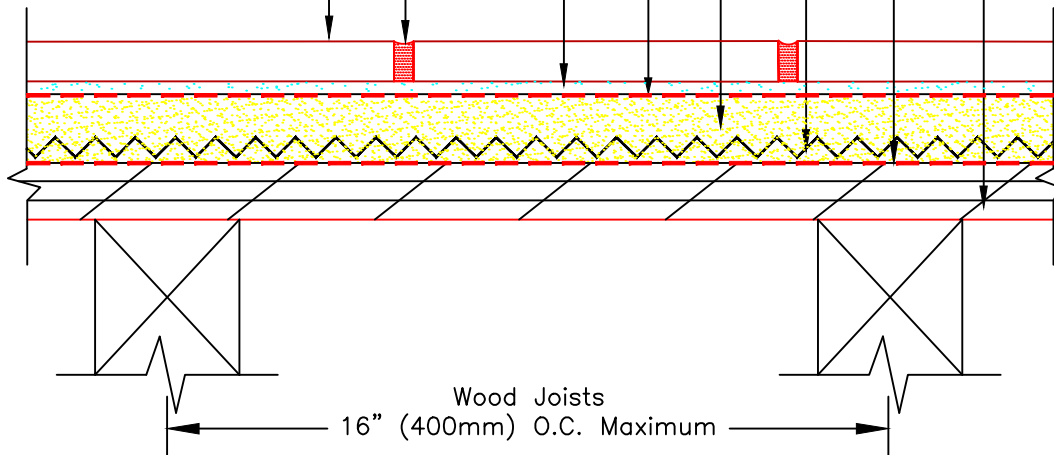
3701 Fortified Mortar

HYDRO BAN®

Tile Installation Mortar\*

SPECTRALOCK® PRO  
Premium Grout; or,  
PERMACOLOR® Select

Ceramic Tile or Stone



\*Tile Installation Mortar to be either 257 TITANIUM, 254 Platinum, or MULTIMAX LITE.

Revision Date: 2/20 Scale: N.T.S.

AS A PROFESSIONAL COURTESY, LATICRETE OFFERS TECHNICAL SERVICES FREE OF CHARGE. THE USER MAINTAINS ALL RESPONSIBILITY FOR VERIFYING THE APPLICABILITY AND SUITABILITY OF THE TECHNICAL SERVICE OR INFORMATION PROVIDED.

(C)2020 LATICRETE INTERNATIONAL, INC. ALL RIGHTS RESERVED. THE RIGHT TO UTILIZE LATICRETE DETAILS FOR COMMERCIAL PURPOSES IS GRANTED EXCLUSIVELY TO CONTRACTORS, ARCHITECTS, QUANTITY SURVEYORS, ENGINEERS, AND SPECIFICATIONS WRITERS. ALL TRADEMARKS SHOWN ARE THE INTELLECTUAL PROPERTIES OF THEIR RESPECTIVE OWNERS.