



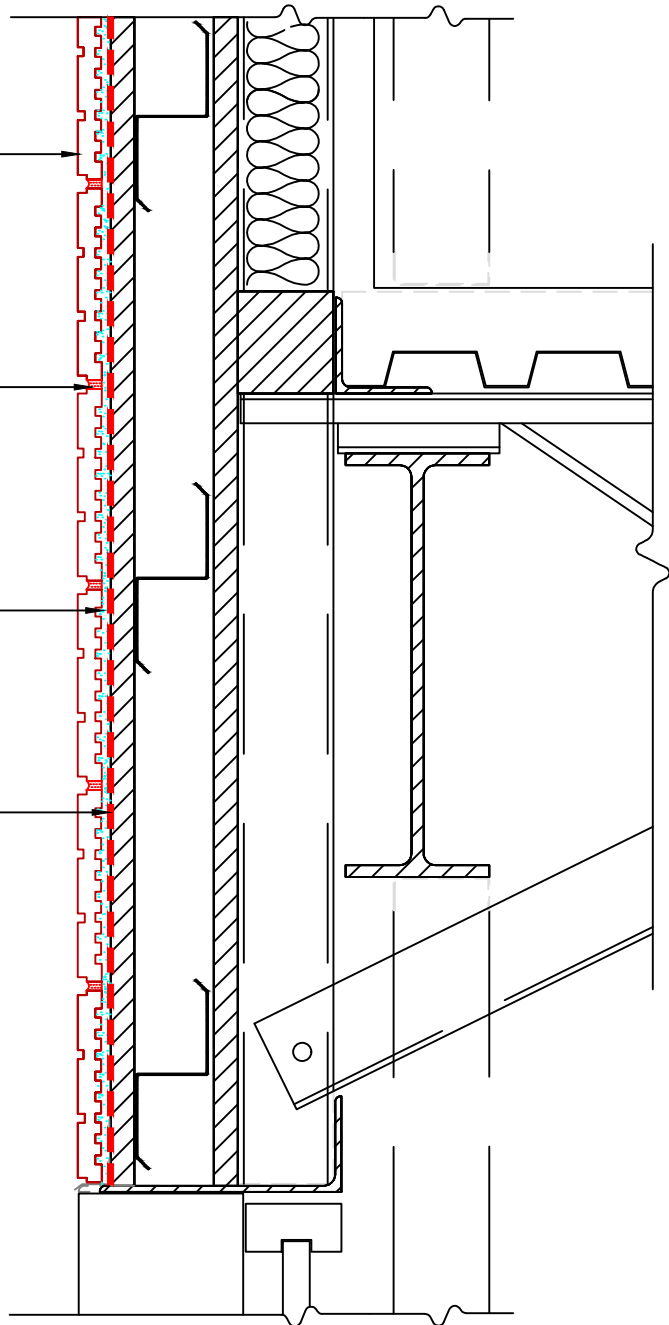
Drawing No. ES W305

Thin Brick Courses

PERMACOLOR® Select

Tile Installation Mortar*

HYDRO BAN®



*Tile Installation Mortar to be either 257 TITANIUM, 254 Platinum, or MULTIMAX LITE.

NOTE: Vapor Barrier, Weather Barrier, Separation Sheet, Insulation, Waterproofing, and Furring Type/Location to be Determined by Design Professional. Maximum Allowable Deflection Under All Live, Dead and Impact Loads, Including Concentrated Loads, Must Not Exceed $L/600$ Where L =Span Length. Design Professional to Ensure Compliance With Building Code(s).

Revision Date: 2/20

Scale: N.T.S.

AS A PROFESSIONAL COURTESY, LATICRETE OFFERS TECHNICAL SERVICES FREE OF CHARGE. THE USER MAINTAINS ALL RESPONSIBILITY FOR VERIFYING THE APPLICABILITY AND SUITABILITY OF THE TECHNICAL SERVICE OR INFORMATION PROVIDED.

(C)2020 LATICRETE INTERNATIONAL, INC. ALL RIGHTS RESERVED. THE RIGHT TO UTILIZE LATICRETE DETAILS FOR COMMERCIAL PURPOSES IS GRANTED EXCLUSIVELY TO CONTRACTORS, ARCHITECTS, QUANTITY SURVEYORS, ENGINEERS, AND SPECIFICATIONS WRITERS. ALL TRADEMARKS SHOWN ARE THE INTELLECTUAL PROPERTIES OF THEIR RESPECTIVE OWNERS.