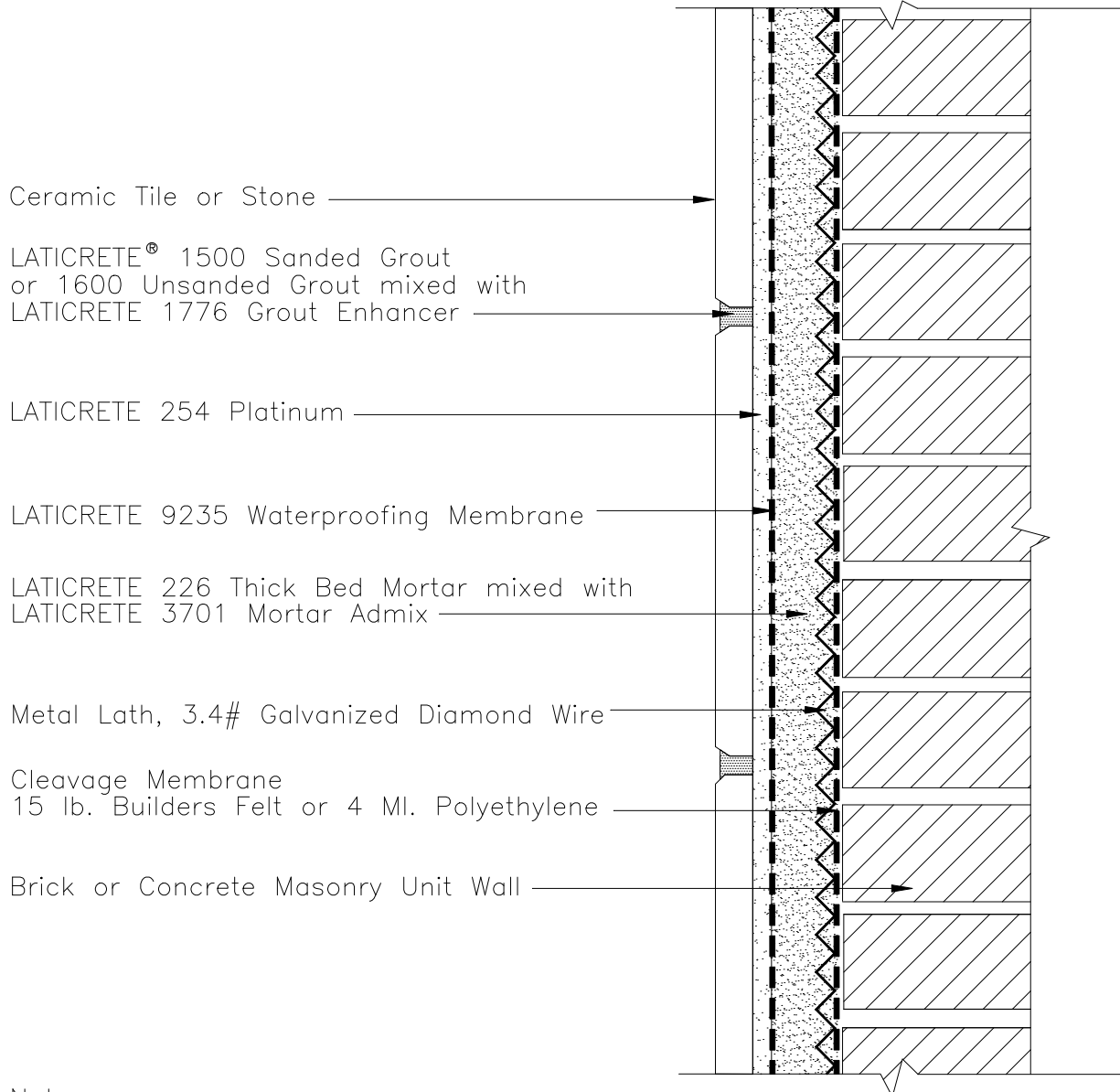


ES W221 CMU/Brick-Thick Bed with Metal Lath



Ceramic Tile or Stone

LATICRETE® 1500 Sanded Grout
or 1600 Unsanded Grout mixed with
LATICRETE 1776 Grout Enhancer

LATICRETE 254 Platinum

LATICRETE 9235 Waterproofing Membrane

LATICRETE 226 Thick Bed Mortar mixed with
LATICRETE 3701 Mortar Admix

Metal Lath, 3.4# Galvanized Diamond Wire

Cleavage Membrane
15 lb. Builders Felt or 4 MI. Polyethylene

Brick or Concrete Masonry Unit Wall

Note:
Vapor Barrier and Insulation –
Type/Location to be Determined by Design Professional

Revision Date: 5/08

Scale: N.T.S.

AS A PROFESSIONAL COURTESY, LATICRETE OFFERS TECHNICAL SERVICES FREE OF CHARGE. THE USER MAINTAINS ALL RESPONSIBILITY FOR VERIFYING THE APPLICABILITY AND SUITABILITY OF THE TECHNICAL SERVICE OR INFORMATION PROVIDED.

(C)2008 LATICRETE INTERNATIONAL, INC. ALL RIGHTS RESERVED. THE RIGHT TO UTILIZE LATICRETE DETAILS FOR COMMERCIAL PURPOSES IS GRANTED EXCLUSIVELY TO CONTRACTORS, ARCHITECTS, QUANTITY SURVEYORS, ENGINEERS, AND SPECIFICATIONS WRITERS. LATICRETE (R), LATAPOXY (R) ARE REGISTERED TRADEMARKS OF LATICRETE INTERNATIONAL, INC. US & FOREIGN PATENT AND TRADEMARK OFFICES. MARCA REGISTRADA. ALL OTHER TRADEMARKS ARE PROPERTY OF THEIR RESPECTIVE COMPANIES.