

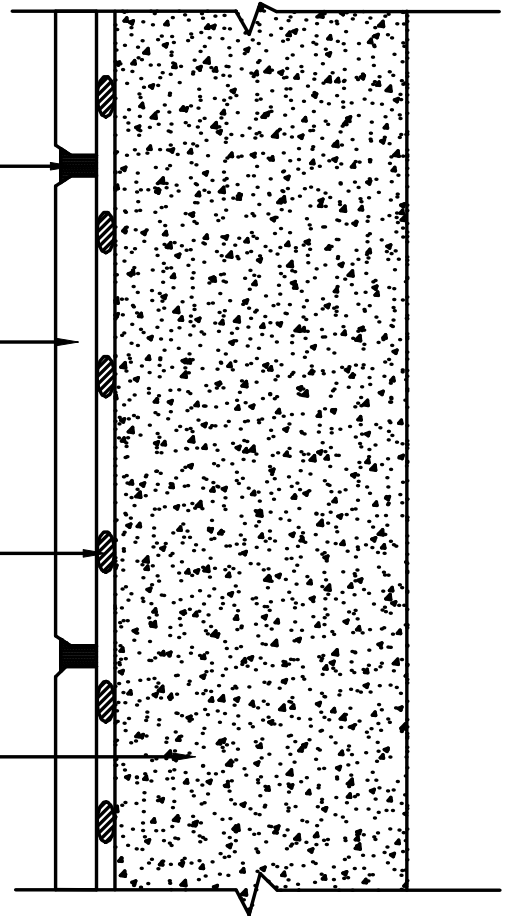
Detail ES-W215  
MVIS – Interior

LATICRETE® Masonry Pointing Mortar

Manufactured Stone, Natural Stone or  
Thin Brick

LATAPOXY® 310 Stone Adhesive (1.)

Concrete or Masonry Wall (2.)



NOTES:

- 1.) Consult Data Sheet for appropriate diameter dab size thickness and veneer requirements.
- 2.) Surface must be plumb and smooth, clean and free of debris and any contaminants.
- 3.) Maximum deflection under total anticipated load not to exceed L/360 for tile or L/480 for stone.

Revision Date: 8/09      Scale: N.T.S.

AS A PROFESSIONAL COURTESY, LATICRETE OFFERS TECHNICAL SERVICES FREE OF CHARGE. THE USER MAINTAINS ALL RESPONSIBILITY FOR VERIFYING THE APPLICABILITY AND SUITABILITY OF THE TECHNICAL SERVICE OR INFORMATION PROVIDED.

(C)2009 LATICRETE INTERNATIONAL, INC. ALL RIGHTS RESERVED. THE RIGHT TO UTILIZE LATICRETE DETAILS FOR COMMERCIAL PURPOSES IS GRANTED EXCLUSIVELY TO CONTRACTORS, ARCHITECTS, QUANTITY SURVEYORS, ENGINEERS, AND SPECIFICATIONS WRITERS. LATICRETE (R), LATAPOXY (R) ARE REGISTERED TRADEMARKS OF LATICRETE INTERNATIONAL, INC. US & FOREIGN PATENT AND TRADEMARK OFFICES. MARCA REGISTRADA. ALL OTHER TRADEMARKS ARE PROPERTY OF THEIR RESPECTIVE COMPANIES.