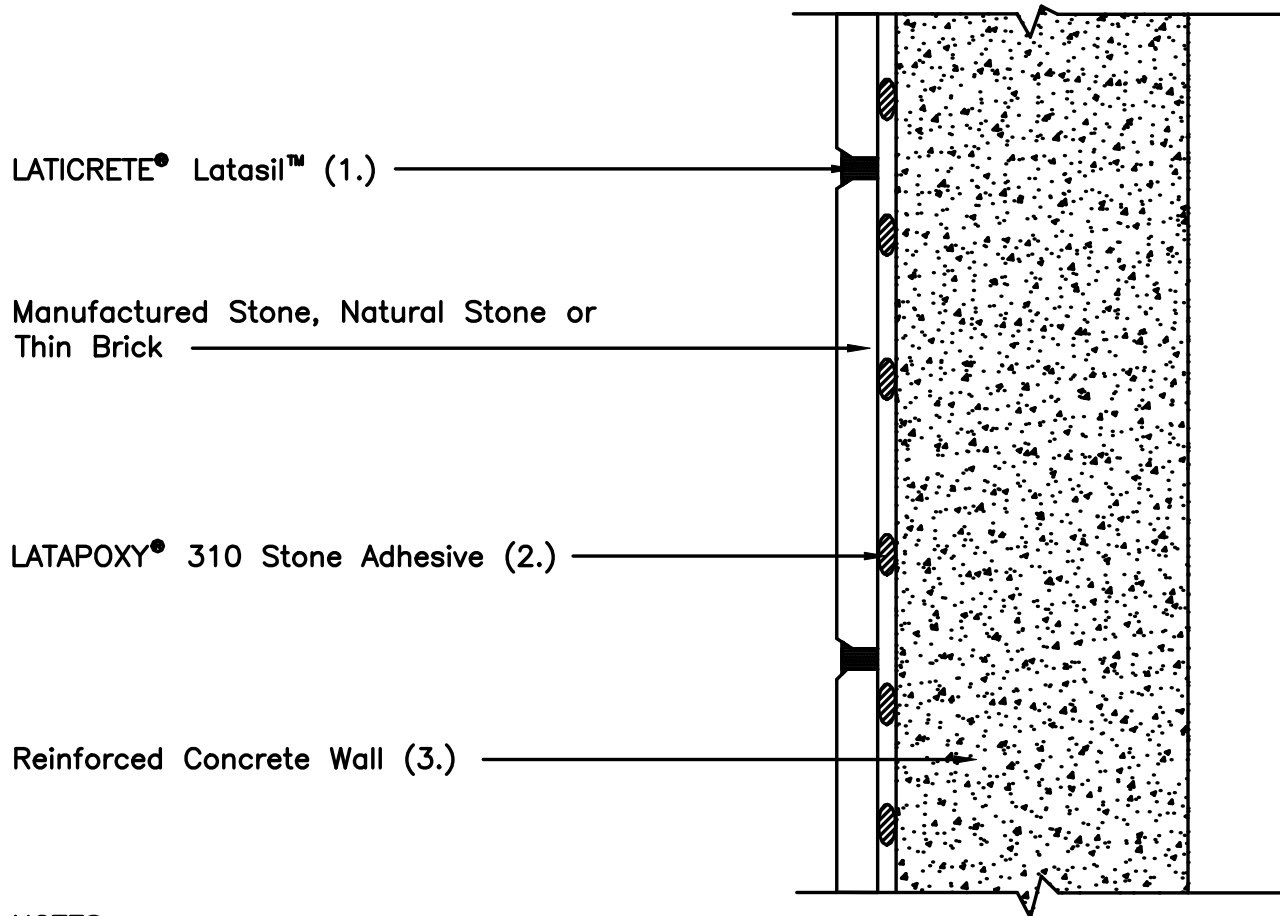


Detail ES-W309(E)
MVIS



NOTES:

- 1.) Flexible Sealant – LATICRETE Latasil
- 2.) Consult Data Sheet for appropriate diameter dab size thickness and veneer requirements.
- 3.) Surface must be plumb and smooth, clean and free of debris and any contaminants. Minimum requirements for concrete shall be 6" (150mm) thickness; 3,500 psi (24MPa) and 28 days old. Maximum deflection under total anticipated load not to exceed L/360 for tile or L/480 for stone.
- 4.) Install weeps as specified on project documents and industry standards.
- 5.) Consult LATICRETE Technical Services for exterior installations.
- 6.) Installation height not to exceed 30' (9.1m) unless approved by design professional.

Revision Date: 8/09

Scale: N.T.S.

AS A PROFESSIONAL COURTESY, LATICRETE OFFERS TECHNICAL SERVICES FREE OF CHARGE. THE USER MAINTAINS ALL RESPONSIBILITY FOR VERIFYING THE APPLICABILITY AND SUITABILITY OF THE TECHNICAL SERVICE OR INFORMATION PROVIDED.

(C)2009 LATICRETE INTERNATIONAL, INC. ALL RIGHTS RESERVED. THE RIGHT TO UTILIZE LATICRETE DETAILS FOR COMMERCIAL PURPOSES IS GRANTED EXCLUSIVELY TO CONTRACTORS, ARCHITECTS, QUANTITY SURVEYORS, ENGINEERS, AND SPECIFICATIONS WRITERS. LATICRETE (R), LATAPOXY (R) ARE REGISTERED TRADEMARKS OF LATICRETE INTERNATIONAL, INC. US & FOREIGN PATENT AND TRADEMARK OFFICES. MARCA REGISTRADA. ALL OTHER TRADEMARKS ARE PROPERTY OF THEIR RESPECTIVE COMPANIES.