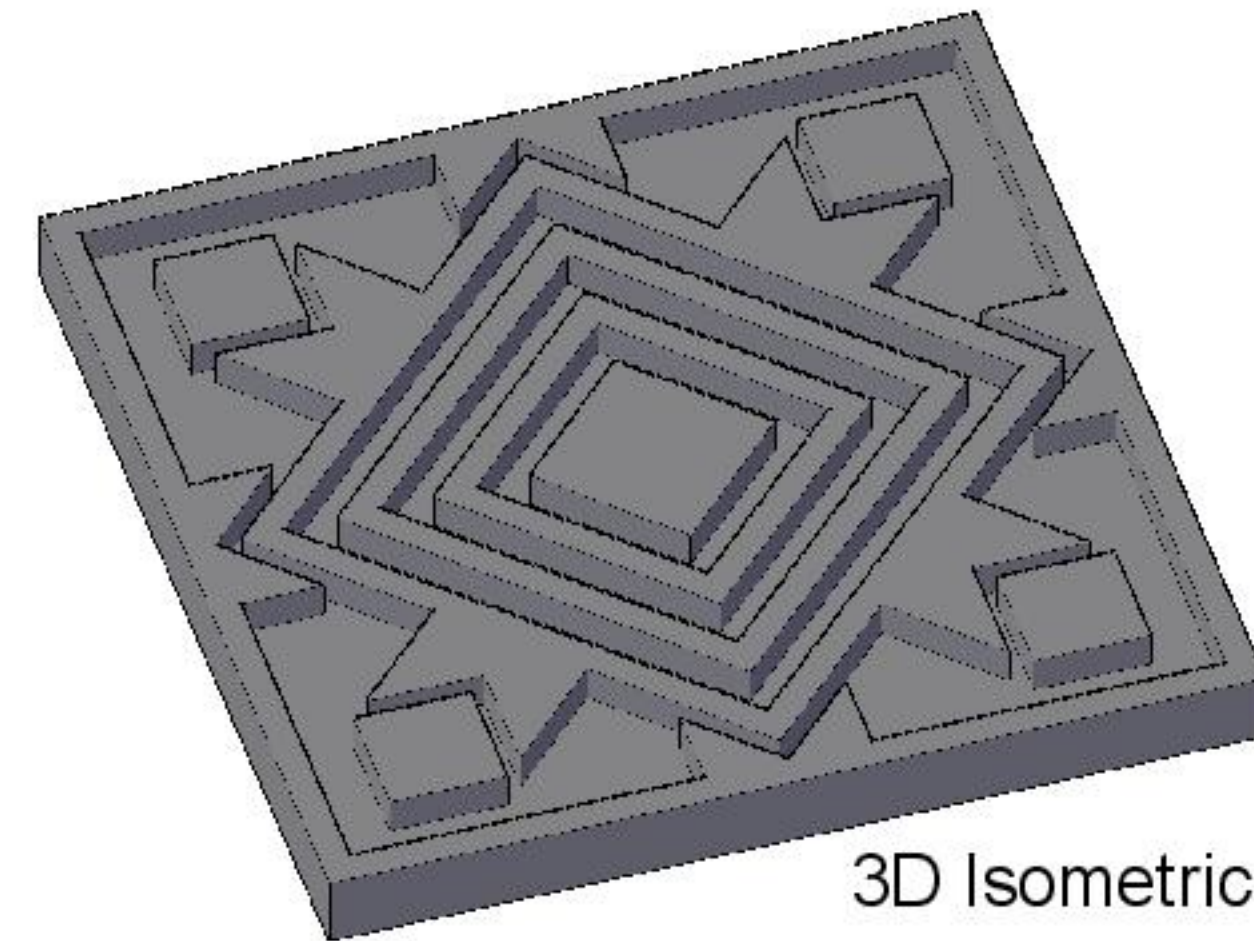
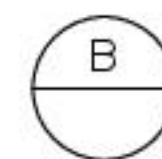
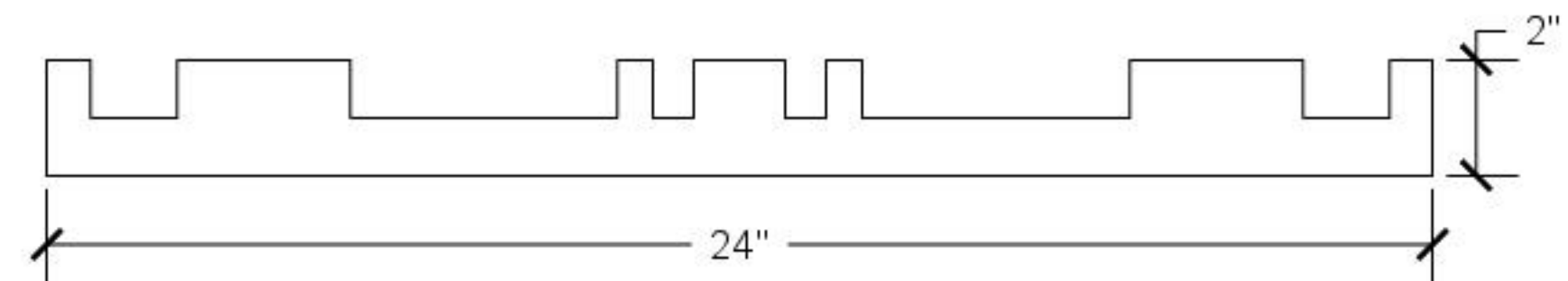


Tile Face

3" = 1'-0"



3D Isometric



Tile Side

3" = 1'-0"



4420 ANDREWS ST, STE A  
NORTH LAS VEGAS, NV 89081

PH: (702) 968-0222  
FAX: (702) 728-2777

ALL DRAWINGS MUST BE  
SIGNED FOR APPROVAL  
PRIOR TO PRODUCTION

☐ APPROVED  
☐ APPROVED AS NOTED  
☐ REVISE AND RESUBMIT

X

DATE: \_\_\_\_\_

DELIVERY, STORAGE &  
HANDLING

A. TRANSPORT, LIFT AND  
HANDLE UNITS WITH  
CARE AVOIDING  
EXCESSIVE STRESS AND  
PREVENTING DAMAGE.  
USE APPROPRIATE  
EQUIPMENT.

B. STORE PRODUCTS IN  
MANUFACTURER'S  
UNOPENED PACKAGING  
UNTIL READY FOR  
INSTALLATION, IN A  
CLEAN DRY AREA  
PROTECTED FROM  
WEATHER, MOISTURE  
AND DAMAGE. STORE  
UNITS UPRIGHT AND  
NOT STACKED UNLESS  
PERMITTED BY  
MANUFACTURER.

TOLERANCES:

A. DIMENSIONAL OVERALL  
TOLERANCE  $\pm \frac{1}{8}"$

B. THICKNESS  $\pm \frac{1}{8}"$

C. WARPAGE OR BOWING  
 $\frac{1}{16}"$  PER FOOT.

COMPANY NAME:  
LEGACY

PROJECT:  
XX

MATERIAL TYPE:  
GFRG

DESCRIPTION:  
XX

QUANTITY:  
XX

DRAFTED BY:  
KPH

DATE:  
02/28/2024

REV.  
-

SHEET:  
26