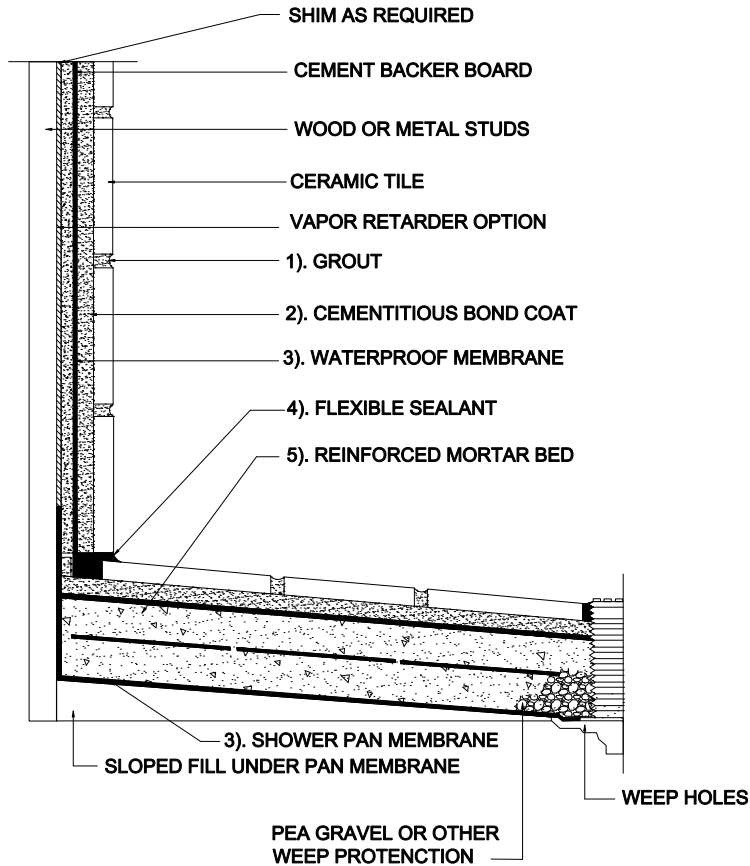


SHOWER RECEPTORS

Wood or Metal Studs, Fiber Cement or Cement Backer Board Walls, Mortar Bed Floor, Waterproof Membrane, Ceramic Tile

MAPEI: MB415
 TCNA: B415-16
 TTMAC: n/a
 Version 2016



MAPEI Products Assembly

1. Grout Options:

- | | | |
|----|--|------------------|
| A. | <i>Opticolor™</i> or <i>Kerapoxy®</i> CQ | ISO 13007 RG |
| B. | <i>Ultracolor®</i> Plus | ISO 13007 CG2WAF |
| C. | <i>Keracolor™</i> U | ISO 13007 CG2WA |
| D. | <i>MAPEI Flexcolor™</i> CQ | |

2. Cementitious Bond Coat Options:

- | | | |
|----|---|--------------------|
| A. | <i>Kerabond/Keralastic™</i> System | ISO 13007 C2ES2P2 |
| B. | <i>Kerabond™</i> T/ <i>Keralastic™</i> System | ISO 13007 C2ES2P2 |
| C. | <i>Granirapid®</i> System | ISO 13007 C2FS2P2 |
| D. | <i>Ultraflex™</i> LFT™ | ISO 13007 C2TES1P1 |
| E. | <i>Ultraflex LFT Rapid</i> | ISO 13007 C2TFS1P1 |
| F. | <i>Ultraflex 3</i> | ISO 13007 C2ES1P1 |

3. Waterproofing Membrane:

- | | |
|----|--------------------------------|
| A. | <i>Mapelastic™</i> AquaDefense |
|----|--------------------------------|