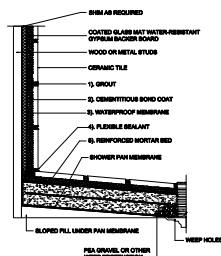


SHOWER RECEPTORS

Wood or Metal Studs, Coated Glass Mat, Water-Resistant Gypsum Backer Board
Walls, Mortar Bed Floor, Waterproof Membrane
Ceramic Tile

MAPEI: MB420
TCNA: B420-16
TTMAC: 326DR
Version: 2015



MAPEI Products Assembly

1. Grout Options:

- | | | |
|----|--|------------------|
| A. | <i>Opticolor™</i> or <i>Kerapoxy® CQ</i> | ISO 13007 RG |
| B. | <i>Ultracolor® Plus</i> | ISO 13007 CG2WAF |
| C. | <i>Keracolor™ U</i> | ISO 13007 CG2WA |
| D. | <i>MAPEI Flexcolor™ CQ</i> | |

2. Cementitious Bond Coat Options:

- | | | |
|----|---|--------------------|
| A. | <i>Kerabond/Keralastic™</i> System | ISO 13007 C2ES2P2 |
| B. | <i>Kerabond™ T / Keralastic™</i> System | ISO 13007 C2ES2P2 |
| C. | <i>Granirapid®</i> System | ISO 13007 C2FS2P2 |
| D. | <i>Ultraflex™ LFT™</i> | ISO 13007 C2TES1P1 |
| E. | <i>Ultraflex LFT Rapid</i> | ISO 13007 C2TFS1P1 |
| F. | <i>Ultraflex 3</i> | ISO 13007 C2ES1P1 |

3. Waterproofing Membrane:

- | | | |
|----|--------------------------------|--|
| A. | <i>Mapelastic™ AquaDefense</i> | |
|----|--------------------------------|--|