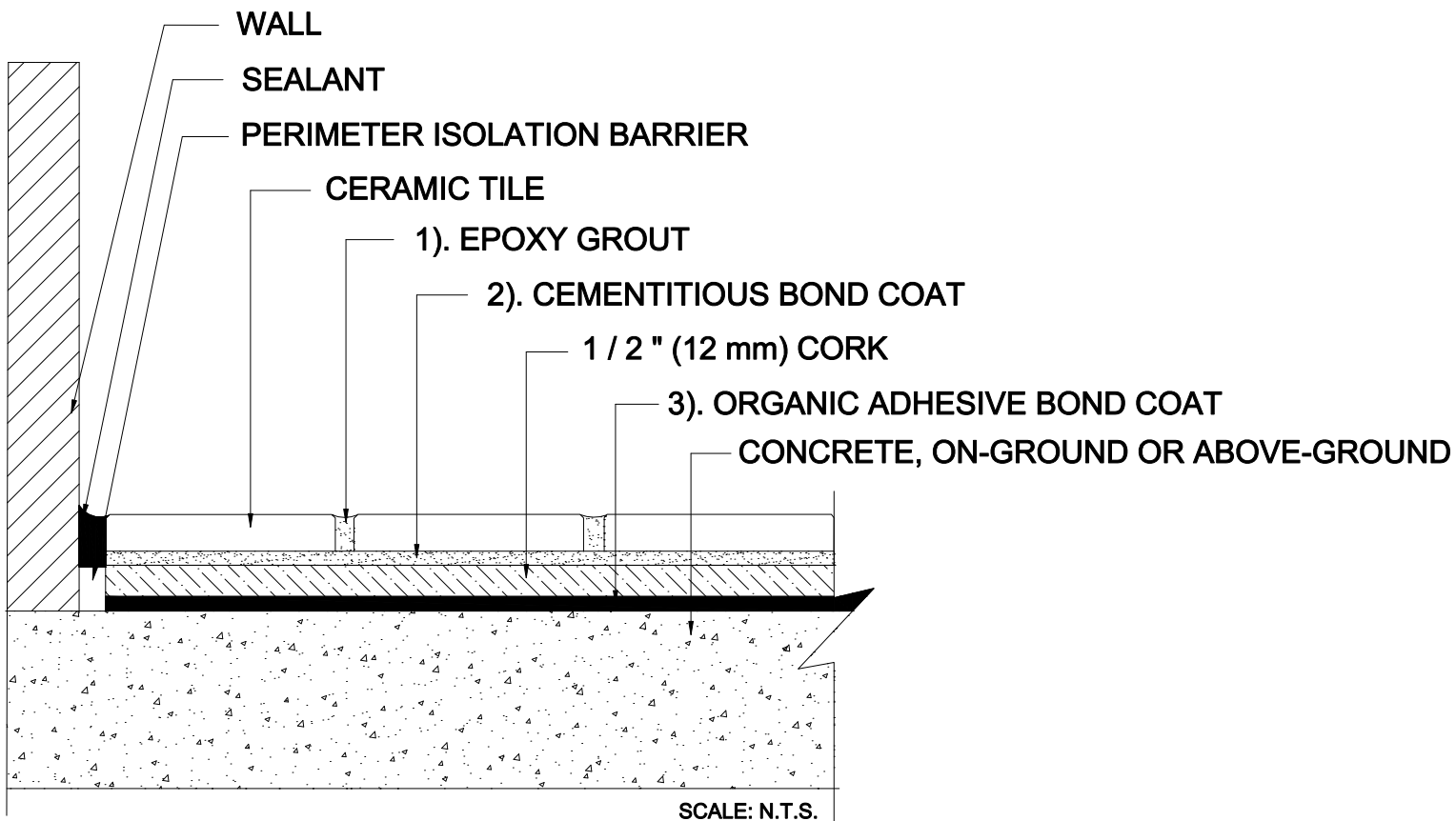


INTERIOR FLOORS OVER CONCRETE

On-Ground or Above-Ground Concrete
 1/2" (12 mm) Cork Underlayment
 Epoxy Grout
 Ceramic Tile

MAPEI: MF135
 TCNA: F135-16
 TTMAC: 331F-SC
 Version: 2016



MAPEI Products Assembly

1. Epoxy Grout Options:

- | | |
|----------------|--------------|
| A. Kerapoxy® | ISO 13007 RG |
| B. Kerapoxy CQ | ISO 13007 RG |

2. Cementitious Bond Coat Options:

- | | |
|------------------------------------|--------------------|
| A. Kerabond/Keralestic™ System | ISO 13007 C2E82P2 |
| B. Kerabond™ T/ Keralestic™ System | ISO 13007 C2E82P2 |
| C. Gran/rapid® System | ISO 13007 C2F82P2 |
| D. Ultraflex™ LFT™ | ISO 13007 C2E81P1 |
| E. Ultraflex LFT Rapid | ISO 13007 C2TF81P1 |
| F. Ultraflex 3 | ISO 13007 C2E81P2 |

3. Organic Adhesive Bond Coat Options:

- | | |
|-------------|-----------------|
| A. Type 1™ | ISO 13007 D-1TE |
| B. Ker® 900 | ISO 13007 D-1TE |