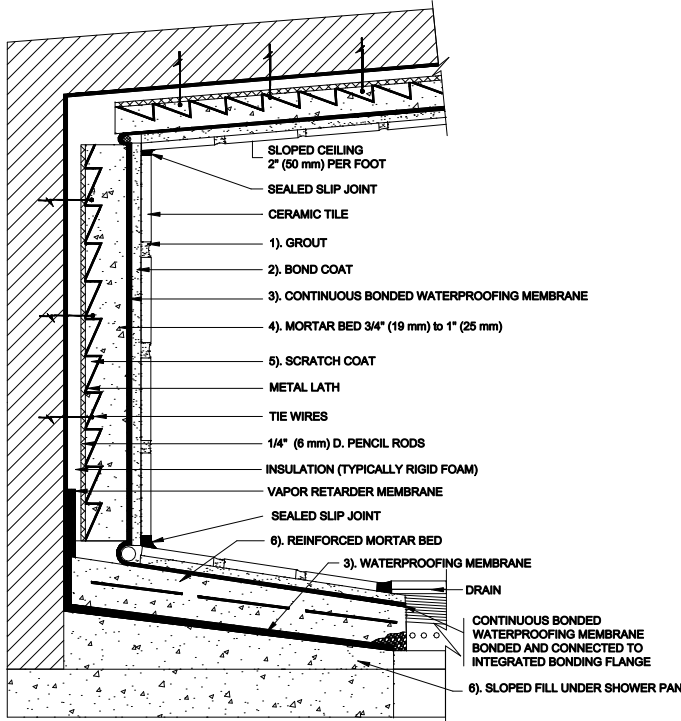


STEAM SHOWER/ROOM; MASONRY/CONCRETE

Masonry or Concrete
Mortar Bed Walls, Mortar Bed Floor
Ceramic Tile

MAPEI: MSR613
TCNA: SR613-16
TTMAC: 321SR-A
Version: 2016



MAPEI Products Assembly

1. **Grout Options:**
 - A. *Kerapoxy*[®] ISO 13007 RG
 - B. *Kerapoxy CQ* ISO 13007 RG
2. **Bond Coat Options:**
 - A. *Kerabond/Keralastic*[™] System ISO 13007 C2ES2P2
 - B. *Kerabond*[™] T / *Keralastic*[™] System ISO 13007 C2ES2P2
 - C. *Granirapid*[®] System ISO 13007 C2FS2P2
3. **Waterproofing Membrane:**
 - A. *Mapelastic*[™] 315
4. **Mortar Bed:**
 - A. *Modified Mortar Bed*
5. **Scratch Coat:**
 - A. *Modified Mortar Bed*
6. **Reinforced Mortar / Sloped Fill Under Shower Pan**
 - A. *Modified Mortar Bed*