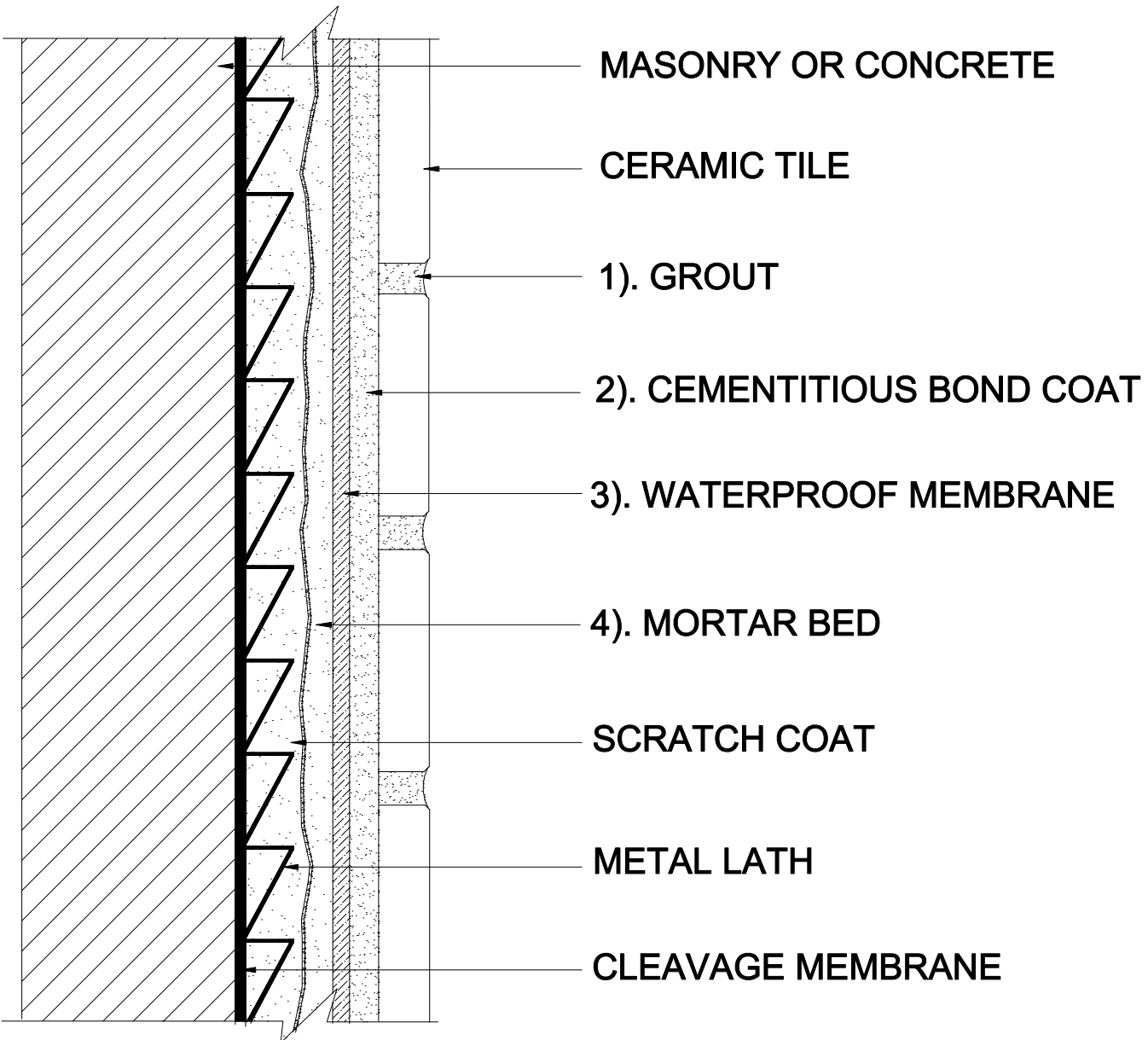


# EXTERIOR WALLS

Masonry or Concrete  
Mortar Bed  
Ceramic Tile

MAPEI: MW201  
TCNA: W201-16  
TTMAC: 302-W  
Version: 2016



SCALE: N.T.S.

## MAPEI Products Assembly

- Grout:**
  - Ultracolor® Plus* ISO 13007 CG2WAF
- Cementitious Bond Coat Options:**
  - Kerabond/Keralastic™ System* ISO 13007 C2ES2P2
  - Kerabond™ T/Keralastic™ System* ISO 13007 C2ES2P2
  - Granirapid® System* ISO 13007 C2FS2P2
  - Ultraflex™ LFT™* ISO 13007 C2TES1P1
  - Ultraflex LFT Rapid* ISO 13007 C2TFS1P1
  - Ultraflex 3* ISO 13007 C2ES1P1
- Waterproofing Membrane:**
  - Mapelastic™ 315*
- Mortar Bed:**
  - Modified Mortar Bed*