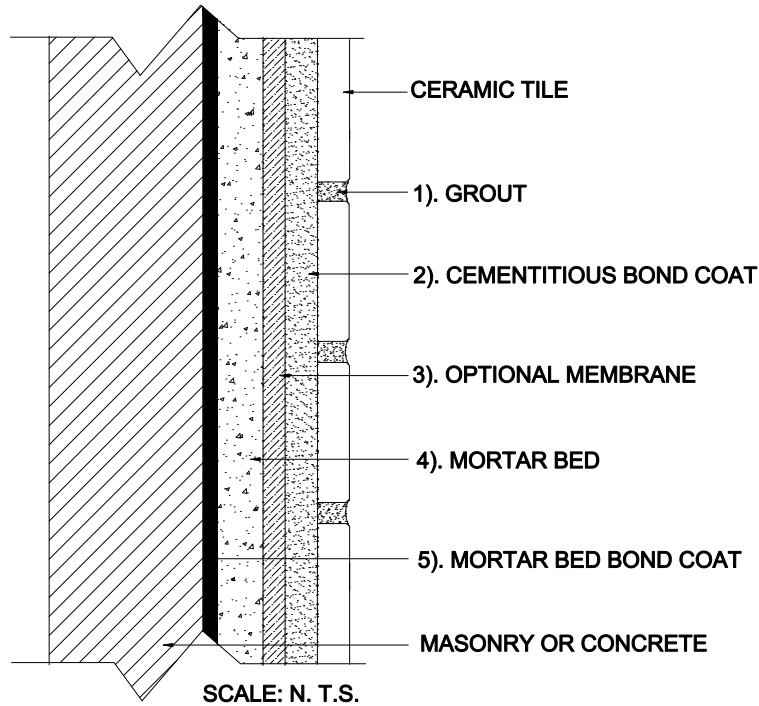


INTERIOR WALLS OVER MASONRY OR CONCRETE

Masonry or Concrete
Bonded Mortar Bed
Ceramic Tile

MAPEI: MW211
TCNA: W211-16
TTMAC: 302-W
Version: 2016



MAPEI Products Assembly

1. Grout Options:

- | | |
|---|------------------|
| A. Kerapoxy [®] or Kerapoxy CQ | ISO 13007 RG |
| B. Ultracolor [®] Plus | ISO 13007 CG2WAF |
| C. Keracolor [™] U | ISO 13007 CG2WA |
| D. MAPEI Flexcolor [™] CQ | |

2. Cementitious Bond Coat Options:

- | | |
|---|--------------------|
| A. Kerabond [™] T / Keralastic [™] System | ISO 13007 C2ES1P1 |
| B. Kerabond/Keralastic [™] System | ISO 13007 C2ES1P1 |
| C. Granirapid [®] System | ISO 13007 C2FS2P2 |
| D. Ultraflex [™] LFT [™] | ISO 13007 C2TES1P1 |
| E. Ultraflex LFT Rapid | ISO 13007 C2TFS1P1 |
| F. Ultraflex 3 | ISO 13007 C2ES1P1 |

3. Optional Membrane:

- A. Mapelastic[™] AquaDefense

4. Mortar Bed:

- A. Modified Mortar Bed

5. Mortar Bed Bond Coat (slurry):

- A. Modified Mortar Bed