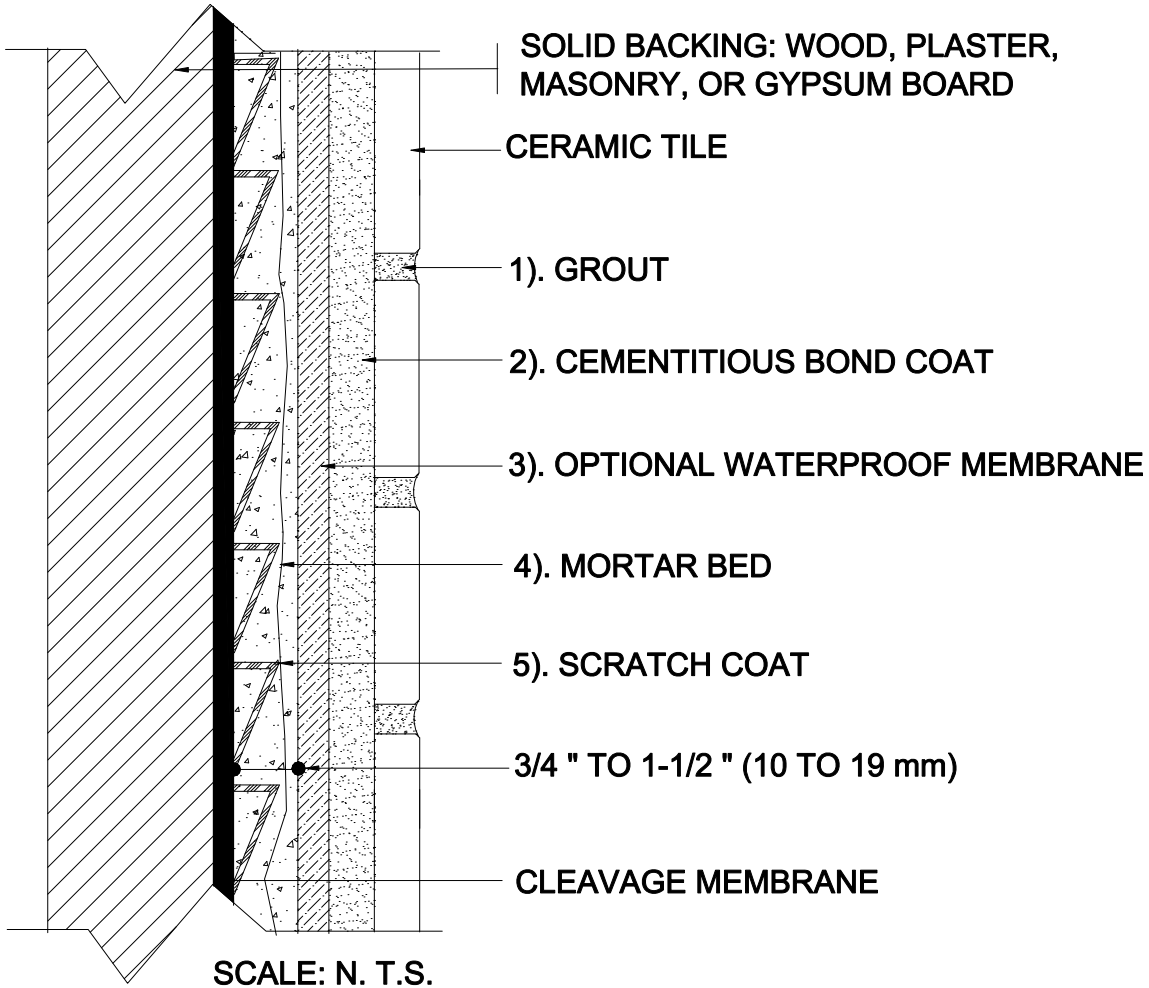


INTERIOR WALLS OVER SOLID BACKING

Solid Backing
Mortar Bed
Ceramic Tile

MAPEI: MW221
TCNA: W221-16
TTMAC: 307-W
Version: 2016



MAPEI Products Assembly

1. Grout Options:

- | | | |
|----|--|------------------|
| A. | <i>Ultracolor[®] Plus</i> | ISO 13007 CG2WAF |
| B. | <i>Keracolor[™] U</i> | ISO 13007 CG2WA |
| C. | <i>Kerapoxy[®] or Kerapoxy CQ</i> | ISO 13007 RG |
| D. | <i>MAPEI Flexcolor[™] CQ</i> | |

2. Cementitious Bond Coat Options:

- | | | |
|----|---|--------------------|
| A. | <i>Kerabond[™] T / Keralastic[™] System</i> | ISO 13007 C2ES2P2 |
| B. | <i>Kerabond/Keralastic[™] System</i> | ISO 13007 C2ES2P2 |
| C. | <i>Granirapid[®] System</i> | ISO 13007 C2FS2P2 |
| D. | <i>Ultraflex[™] LFT[™]</i> | ISO 13007 C2TES1P1 |
| E. | <i>Ultraflex LFT Rapid</i> | ISO 13007 C2TFS1P1 |
| F. | <i>Ultraflex 3</i> | ISO 13007 C2ES1P1 |

3. Optional Waterproofing Membrane Options:

- | | |
|----|---|
| A. | <i>Mapelastic[™] AquaDefense</i> |
| B. | <i>Mapelastic 315</i> |

4. Mortar Bed:

- | | |
|----|----------------------------|
| A. | <i>Modified Mortar Bed</i> |
|----|----------------------------|

5. Scratch Coat:

- | | |
|----|----------------------------|
| A. | <i>Modified Mortar Bed</i> |
|----|----------------------------|