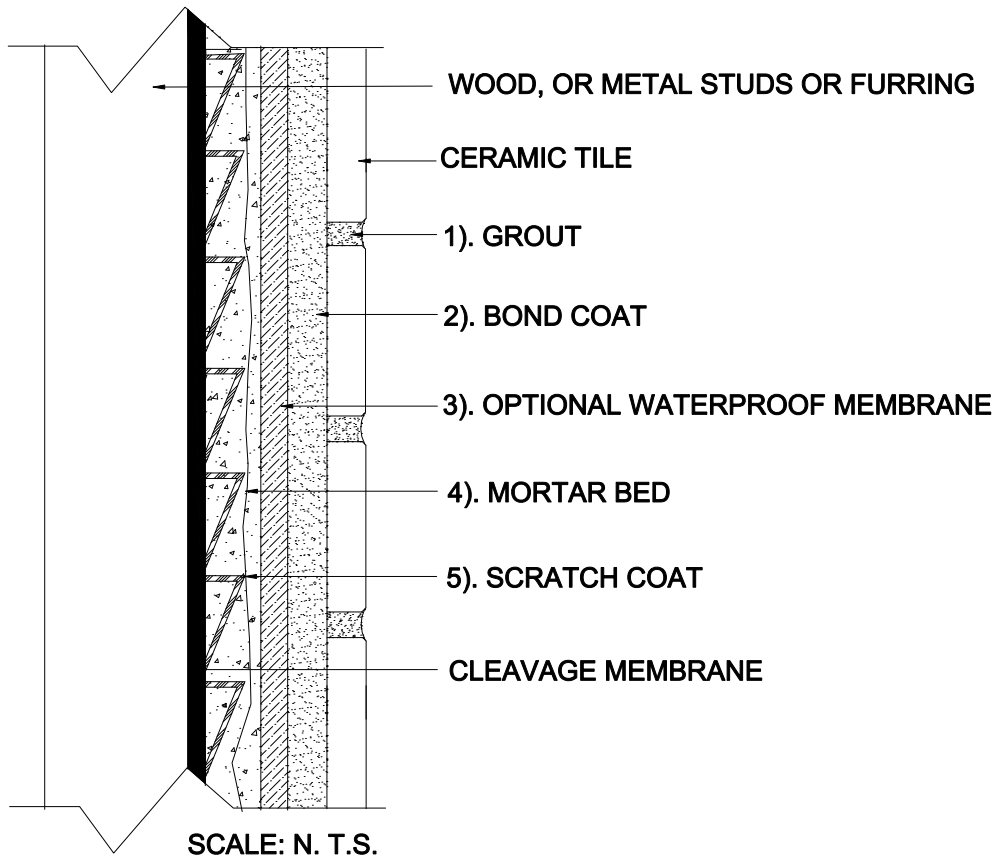


# INTERIOR WALLS OVER WOOD OR METAL STUDS

Wood or Metal Studs  
Mortar Bed  
Ceramic Tile

MAPEI: MW231 / MW241  
TCNA: W231 / W241-16  
TTMAC: 308W-A  
Version: 2016



## MAPEI Products Assembly

1. **Grout Options:**

A. <i>Ultracolor<sup>®</sup> Plus</i>	ISO 13007 CG2WAF
B. <i>Keracolor<sup>™</sup> U</i>	ISO 13007 CG2WA
C. <i>Kerapoxy<sup>®</sup> or Kerapoxy CQ</i>	ISO 13007 RG
D. <i>MAPEI Flexcolor<sup>™</sup> CQ</i>	
2. **Cementitious Bond Coat Options:**

A. <i>Kerabond<sup>™</sup> T / Keralastic<sup>™</sup> System</i>	ISO 13007 C2ES2P2
B. <i>Kerabond/Keralastic<sup>™</sup> System</i>	ISO 13007 C2ES2P2
C. <i>Granirapid<sup>®</sup> System</i>	ISO 13007 C2FS2P2
D. <i>Ultraflex<sup>™</sup> LFT<sup>™</sup></i>	ISO 13007 C2TES1P1
E. <i>Ultraflex LFT Rapid</i>	ISO 13007 C2TFS1P1
F. <i>Ultraflex 3</i>	ISO 13007 C2ES1P1
G. <i>Kerapoxy 410</i>	ISO 13007 R2
3. **Optional Waterproofing Membrane Options:**

A. <i>Mapelastic<sup>™</sup> AquaDefense</i>
B. <i>Mapelastic 315</i>
4. **Mortar Bed:**

A. <i>Modified Mortar Bed</i>
-------------------------------
5. **Scratch Coat:**

A. <i>Modified Mortar Bed</i>
-------------------------------