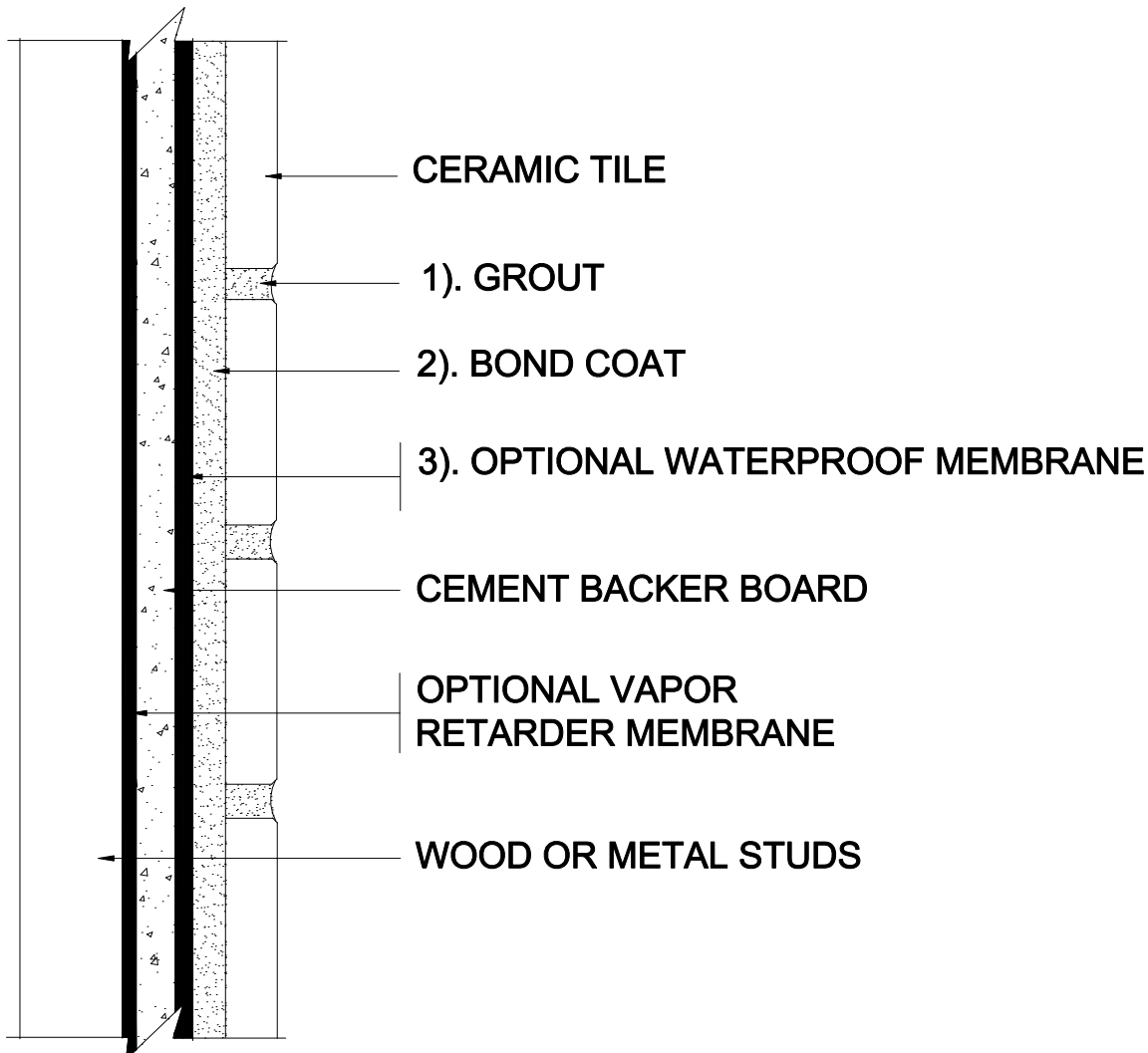


# INTERIOR WALLS OVER WOOD OR METAL STUDS

Wood or Metal Studs  
Cement Backer Board  
Ceramic Tile

MAPEI: MW244C  
TCNA: W244C-16  
TTMAC: 305W-A  
Version: 2016



SCALE: N. T. S.

## MAPEI Products Assembly

### 1. Grout Options:

- |    |                                      |                  |
|----|--------------------------------------|------------------|
| A. | Ultracolor <sup>®</sup> Plus         | ISO 13007 CG2WAF |
| B. | Keracolor <sup>™</sup> U             | ISO 13007 CG2WA  |
| C. | Kerapoxy <sup>®</sup> or Kerapoxy CQ | ISO 13007 RG     |
| D. | MAPEI Flexcolor <sup>™</sup> CQ      |                  |

### 2. Cementitious Bond Coat Options:

- |    |  |                    |
|----|--|--------------------|
| A. | Kerabond <sup>™</sup> T / Keralastic <sup>™</sup> System | ISO 13007 C2ES2P2  |
| B. | Kerabond/Keralastic <sup>™</sup> System                  | ISO 13007 C2ES2P2  |
| C. | Graniraplo <sup>®</sup> System                           | ISO 13007 C2FS2P2  |
| D. | MAPEI Ultralite <sup>™</sup> Mortar                      | ISO 13007 C2TES1P1 |
| E. | Ultraflex <sup>™</sup> LFT <sup>™</sup>                  | ISO 13007 C2TES1P1 |
| F. | Ultraflex LFT Rapid                                      | ISO 13007 C2TFS1P1 |
| G. | Ultraflex 3  | ISO 13007 C2ES1P1  |

### 3. Optional Waterproofing Membrane Options:

- |    |                                     |
|----|-------------------------------------|
| A. | Mapelastic <sup>™</sup> AquaDefense |
| B. | Mapelastic 315                      |