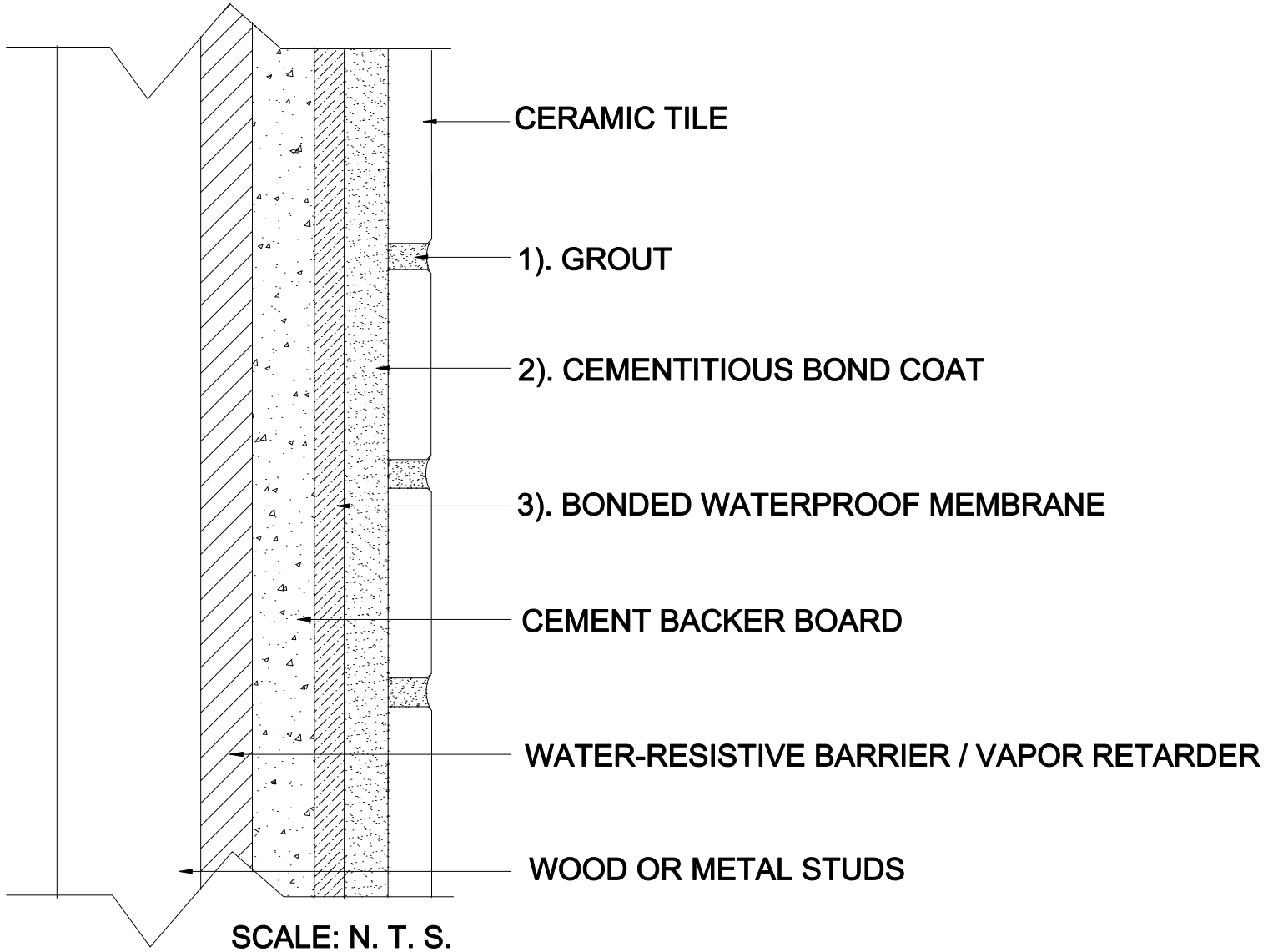


EXTERIOR WALLS

Wood or Metal Studs
Cement Backer Board
Ceramic Tile

MAPEI: MW244E
TCNA: W244E-16
TTMAC: 305W-A
Version: 2016



MAPEI Products Assembly

- 1. Grout Options:
 - A. *Ultracolor[®] Plus* ISO 13007 CG2WAF
 - B. *Keracolor[™] U* ISO 13007 CG2WA

- 2. Cementitious Bond Coat Options:
 - A. *Kerabond[™] T / Keralastic[™] System* ISO 13007 C2ES2P2
 - B. *Kerabond/Keralastic[™] System* ISO 13007 C2ES2P2
 - C. *Granirapid[®] System* ISO 13007 C2FS2P2

- 3. Bonded Waterproof Membrane Options:
 - A. *Mapelastic[™] AquaDefense*
 - B. *Mapelastic 315*