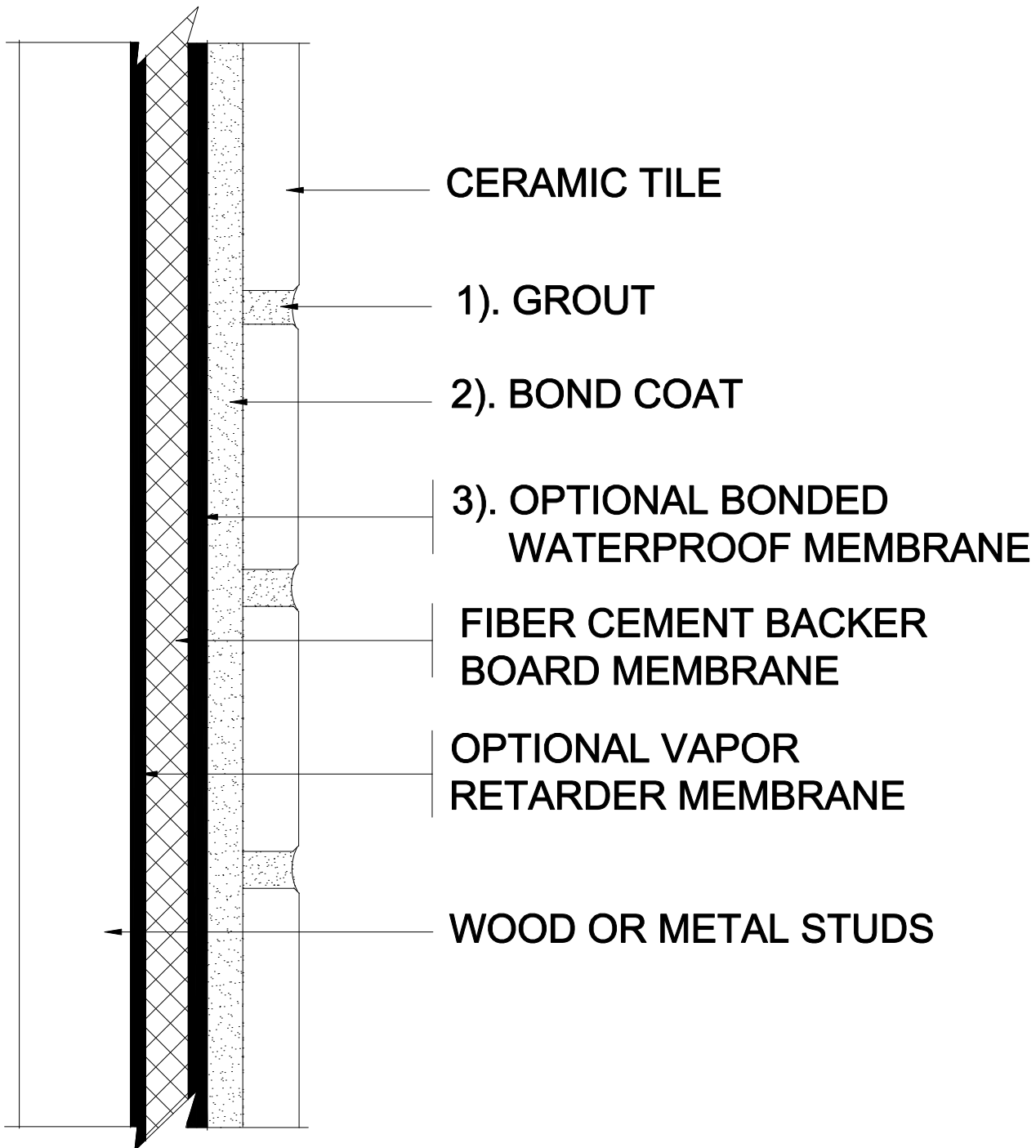


INTERIOR WALLS OVER WOOD OR METAL STUDS

Fiber-Cement Backer Board
Ceramic Tile

MAPEI: MW244F
TCNA: W244F-16
TTMAC: 305W-A
Version: 2016



SCALE: N. T. S.

MAPEI Products Assembly

1. Grout Options:

- | | |
|---|------------------|
| A. <i>Ultracolor[®] Plus</i> | ISO 13007 CG2WAF |
| B. <i>Keracolor[™] U</i> | ISO 13007 CG2WA |
| C. <i>Kerapoxy[®] or Kerapoxy CQ</i> | ISO 13007 RG |
| D. <i>MAPEI Flexcolor[™] CQ</i> | |

2. Cementitious Bond Coat Options:

- | | |
|--|--------------------|
| A. <i>Kerabond[™] T / Keralastic[™] System</i> | ISO 13007 C2ES2P2 |
| B. <i>Kerabond/Keralastic[™] System</i> | ISO 13007 C2ES2P2 |
| C. <i>Granirapid[®] System</i> | ISO 13007 C2FS2P2 |
| D. <i>MAPEI Ultralite[™] Mortar</i> | ISO 13007 C2TES1P1 |
| E. <i>Ultraflex[™] LFT[™]</i> | ISO 13007 C2TES1P1 |
| F. <i>Ultraflex LFT Rapid</i> | ISO 13007 C2TFS1P1 |
| G. <i>Ultraflex 3</i> | ISO 13007 C2ES1P1 |
| H. <i>Kerapoxy 410</i> | ISO 13007 R2 |
| I. <i>Ker 909 or Type 1 (dry areas only)</i> | ISO 13007 D1TE |

3. Optional Waterproofing Membrane Options:

- | | |
|--|--|
| A. <i>Mapelastic[™] AquaDefense</i> | |
| B. <i>Mapelastic 315</i> | |