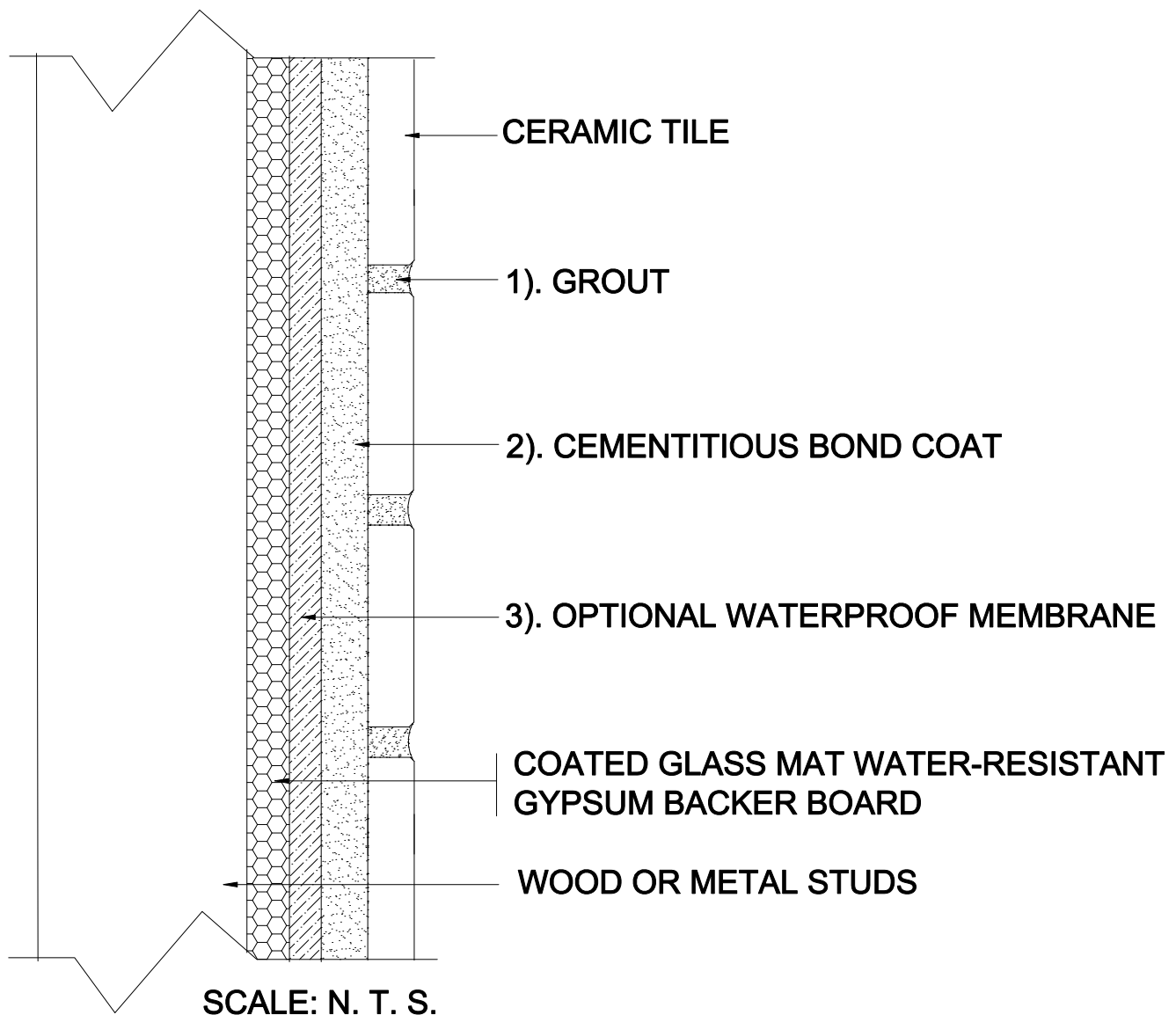


INTERIOR WALLS OVER WOOD OR METAL STUDS

Wood or Metal Studs
Coated Glass Mat Water-Resistant Gypsum Backer Board
Ceramic Tile

MAPEI: MW245
TCNA: W245-16
TTMAC: 305W-B
Version: 2016



MAPEI Products Assembly

1. Grout Options:

- | | | |
|----|--|------------------|
| A. | <i>Ultracolor[®] Plus</i> | ISO 13007 CG2WAF |
| B. | <i>Keracolor[™] U</i> | ISO 13007 CG2WA |
| C. | <i>Kerapoxy[®] or Kerapoxy CQ</i> | ISO 13007 RG |
| D. | <i>MAPEI Flexcolor[™] CQ</i> | |

2. Cementitious Bond Coat Options:

- | | | |
|----|---|--------------------|
| A. | <i>Kerabond[™] T / Keralastic[™] System</i> | ISO 13007 C2ES2P2 |
| B. | <i>Kerabond / Keralastic[™] System</i> | ISO 13007 C2ES2P2 |
| C. | <i>Granirapid[®] System</i> | ISO 13007 C2FS2P2 |
| D. | <i>Ultraflex[™] LFT[™]</i> | ISO 13007 C2TES1P1 |
| E. | <i>Ultraflex LFT Rapid</i> | ISO 13007 C2TFS1P1 |
| F. | <i>Ultraflex 3</i> | ISO 13007 C2ES1P1 |

3. Optional Waterproofing Membrane:

- | | | |
|----|---|--|
| A. | <i>Mapelastic[™] AquaDefense</i> | |
|----|---|--|