

# INTERIOR WALLS OVER WOOD OR METAL STUDS

Wood or Metal Studs

Fiber-Reinforced Water-Resistant Gypsum Backer Board

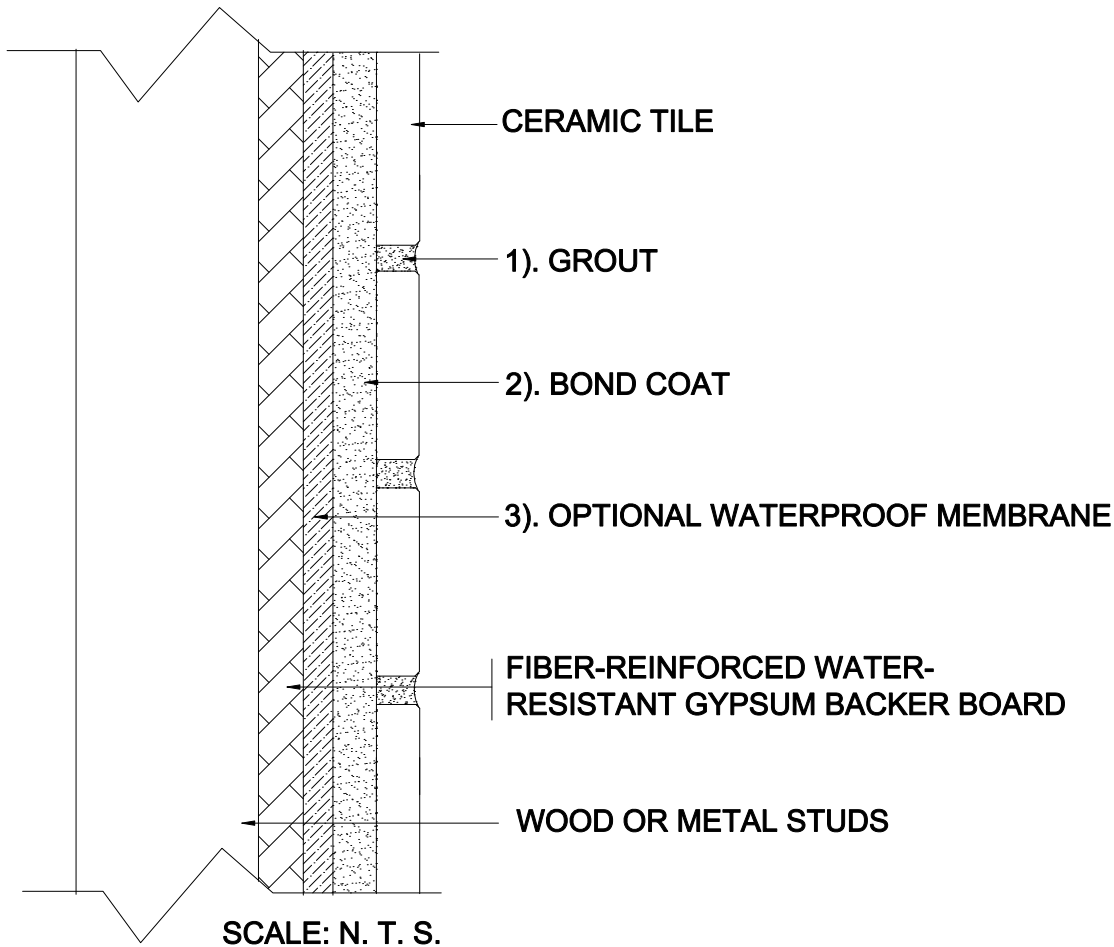
Ceramic Tile

MAPEI: MW247

TCNA: W247-16

TTMAC: N/A

Version: 2016



## MAPEI Products Assembly

### 1. Grout Options:

- |                                               |                  |
|-----------------------------------------------|------------------|
| A. <i>Ultracolor<sup>®</sup> Plus</i>         | ISO 13007 CG2WAF |
| B. <i>Keracolor<sup>™</sup> U</i>             | ISO 13007 CG2WA  |
| C. <i>Kerapoxy<sup>®</sup> or Kerapoxy CQ</i> | ISO 13007 RG     |
| D. <i>MAPEI Flexcolor<sup>™</sup> CQ</i>      |                  |

### 2. Cementitious Bond Coat Options:

- |                                                                      |                    |
|----------------------------------------------------------------------|--------------------|
| A. <i>Kerabond<sup>™</sup> T / Keralastic<sup>™</sup> System</i>     | ISO 13007 C2ES2P2  |
| B. <i>Kerabond / Keralastic<sup>™</sup> System</i>                   | ISO 13007 C2ES2P2  |
| C. <i>Granirapid<sup>®</sup> System</i>                              | ISO 13007 C2FS2P2  |
| D. <i>Ultraflex<sup>™</sup> LFT<sup>™</sup></i>                      | ISO 13007 C2TES1P1 |
| E. <i>Ultraflex 3</i>                                                | ISO 13007 C2ES1P1  |
| F. <i>Ker<sup>®</sup> 909 or Type 1<sup>™</sup> (dry areas only)</i> | ISO 13007 DT1E     |

### 3. Optional Waterproofing Membrane Options:

- |                                              |  |
|----------------------------------------------|--|
| A. <i>Mapelastic<sup>™</sup> AquaDefense</i> |  |
| B. <i>Mapelastic 315</i>                     |  |