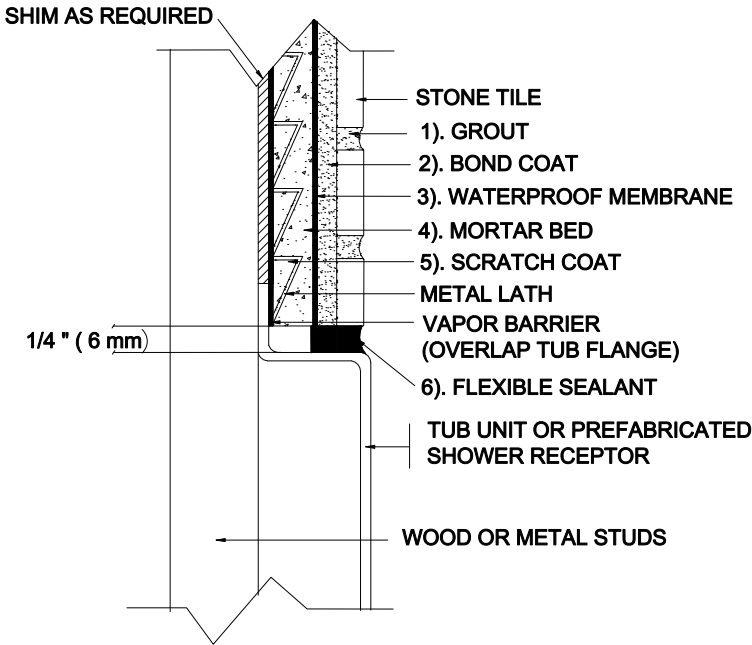


# BATHTUB / SHOWER WALLS

Bathtub or Shower with Prefabricated Receptor  
Mortar Bed  
Stone Tile

MAPEI: MB411-Stone  
TCNA: B411-16-Stone  
TTMAC: 306W-A  
Version: 2016



**MAPEI Products Assembly**

1. **Grout Options:**

A. <i>Ultracolor<sup>®</sup> Plus</i>	ISO 13007 CG2WAF
B. <i>Keracolor<sup>™</sup> U</i>	ISO 13007 CG2WA
C. <i>Kerapoxy<sup>®</sup></i>	ISO 13007 RG
D. <i>Kerapoxy CQ</i>	ISO 13007 RG
E. <i>MAPEI Flexcolor<sup>™</sup> CQ</i>	
  
2. **Bond Coat Options:**

A. <i>Kerabond<sup>™</sup> T / Keralastic<sup>™</sup> System</i>	ISO 13007 C2ES2P2
B. <i>Kerabond/Keralastic<sup>™</sup> System</i>	ISO 13007 C2ES2P2
C. <i>Granirapid<sup>®</sup> System</i>	ISO 13007 C2FS2P2
D. <i>MAPEI Ultralite<sup>™</sup> Mortar</i>	ISO 13007 C2TES1P1
E. <i>Ultraflex<sup>™</sup> 3</i>	ISO 13007 C2ES1P1
  
3. **Waterproof Membrane:**

A. <i>Mapelastic<sup>™</sup> AquaDefense</i>	
--	--
  
4. **Mortar Bed:**

A. <i>Modified Mortar Bed</i>	
-------------------------------	--
  
5. **Scratch Coat:**

A. <i>Modified Mortar Bed</i>	
-------------------------------	--
  
6. **Flexible Sealant Options:**

A. <i>Keracaulk<sup>™</sup> S</i>	
B. <i>Keracaulk U</i>	