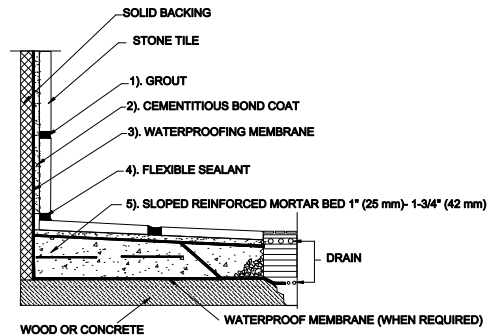


SHOWER RECEPTORS

Solid Backing, Bonded Waterproof Membrane
Stone Tile

MAPEI: MB421-Stone
TCNA: B421-16-Stone
TTMAC: 326DR-B
Version: 2015



SHOWER RECEPTORS, CURBS, SEATS, ETC. MUST BE PROPERLY WATERPROOFED AND INSTALLED TO AVOID WATER DAMAGE TO ADJACENT BUILDING MATERIALS. SEE TCNA COMMON SHOWER CONFIGURATIONS SECTION.

MAPEI Products Assembly

1. Grout Options:
 - A. *Ultracolor[®] Plus* ISO 13007 CG2WAF
 - B. *Kerapoxy[®] CQ* ISO 13007 RG
 - C. *MAPEI Flexcolor[™] CQ*

2. Cementitious Bond Coat Options:
 - A. *Kerabond/Keralastic[™] System* ISO 13007 C2ES2P2
 - B. *Kerabond[™] T / Keralastic[™] System* ISO 13007 C2ES2P2
 - C. *Granrapid[®] System* ISO 13007 C2FS2P2
 - D. *Ultraflex[™] LFT[™]* ISO 13007 C2TES1P1
 - E. *Ultraflex LFT Rapid* ISO 13007 C2TFS1P1
 - F. *Ultraflex S* ISO 13007 C2ES1P1

3. Waterproofing Membrane:
 - A. *Mapelastic[™] AquaDefense*

4. Flexible Sealant Options:
 - A. *Keracaulk[™] S or Keracaulk U*

5. Mortar Bed:
 - A. *Modified Mortar Bed*