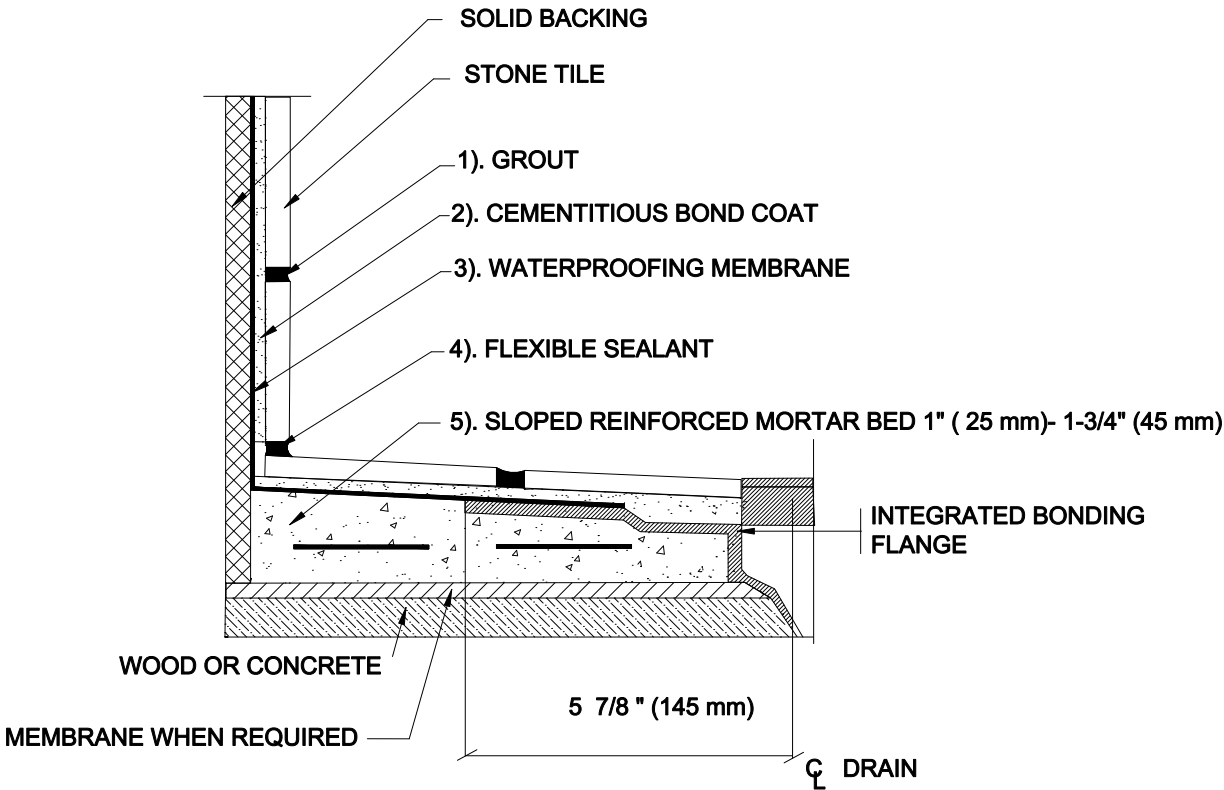


# SHOWER RECEPTORS

Solid Backing, Bonded Waterproof Membrane  
 Intergraded Bonding Flange  
 Stone Tile

MAPEI: MB422-Stone  
 TCNA: B422-16-Stone  
 TTMAC: 326DR-A  
 Version: 2016



SHOWER RECEPTORS, CURBS, SEATS, ETC. MUST BE PROPERLY WATERPROOFED AND INSTALLED TO AVOID WATER DAMAGE TO ADJACENT BUILDING MATERIALS. SEE TCNA COMMON SHOWER CONFIGURATIONS SECTION.

**MAPEI Products Assembly**

1. Grout Options:
 

A. Kerapoxy <sup>®</sup> CQ	ISO 13007 RG
B. Ultracolor <sup>®</sup> Plus	ISO 13007 CG2WAF
C. MAPEI Flexcolor <sup>™</sup> CQ	
  
2. Cementitious Bond Coat Options:
 

A. Kerabond <sup>™</sup> T / Keralastic <sup>™</sup> System	ISO 13007 C2ES2P2
B. Kerabond/Keralastic <sup>™</sup> System	ISO 13007 C2ES2P2
C. Granrapid <sup>®</sup> System	ISO 13007 C2FS2P2
D. Ultraflex <sup>™</sup> LFT <sup>™</sup>	ISO 13007 C2TES1P1
E. Ultraflex LFT Rapid	ISO 13007 C2TFS1P1
F. Ultraflex 3	ISO 13007 C2ES1P1
  
3. Waterproofing Membrane:
 

A. Mapelastic <sup>™</sup> AquaDefense
----------------------------------------
  
4. Flexible Sealant Options:
 

A. Keracaulk <sup>™</sup> S
B. Keracaulk U
  
5. Mortar Bed:
 

A. Modified Mortar Bed
------------------------