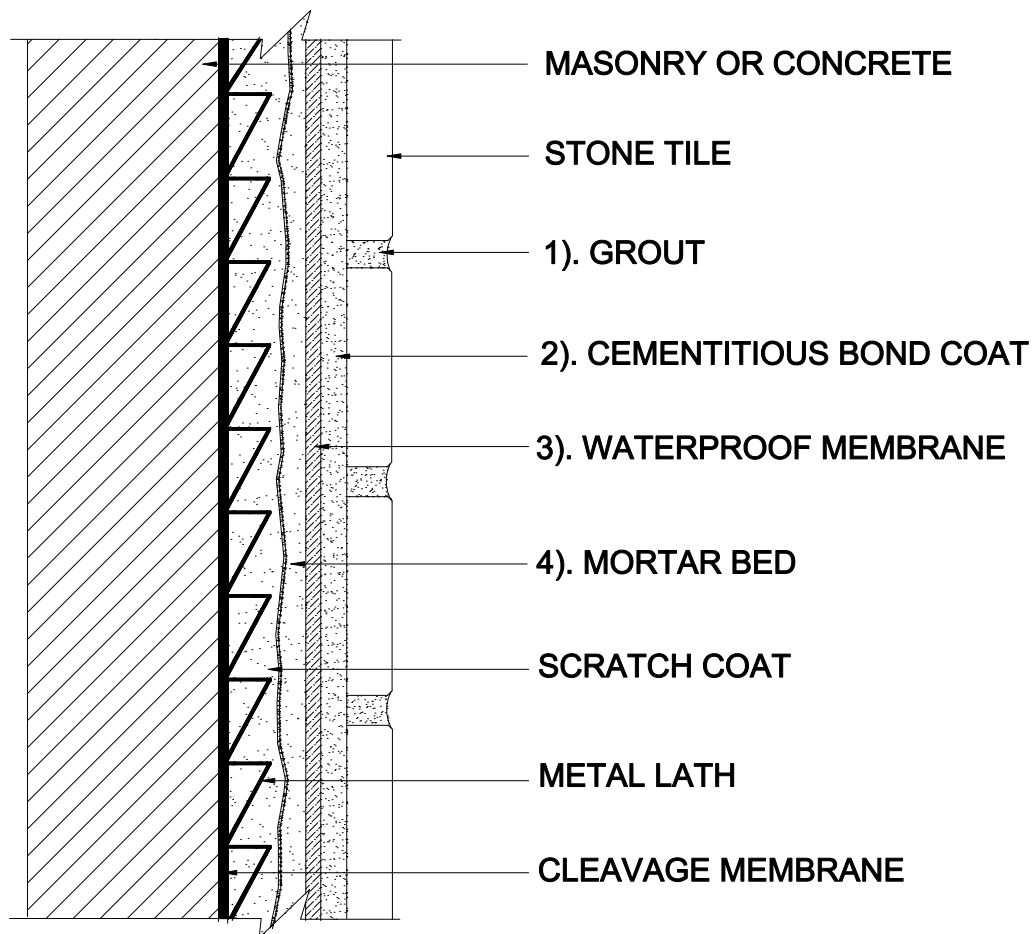


## EXTERIOR WALLS

Masonry or Concrete  
Mortar Bed  
Stone Tile

MAPEI: MW201-Stone  
TCNA: W201-16- Stone  
TTMAC: 302-W  
Version:2016



SCALE: N.T.S.

### MAPEI Products Assembly

1. Grout:
  - A. *Ultracolor<sup>®</sup> Plus* ISO 13007 CG2WAF
2. Cementitious Bond Coat Options:
  - A. *Kerabond/Keralastic™ System* ISO 13007 C2ES2P2
  - B. *Granirapid™ System* ISO 13007 C2FS2P2
  - C. *Ultraflex™ LFT™* ISO 13007 C2TES1P1
  - D. *Ultraflex LFT Rapid* ISO 13007 C2TFS1P1
  - E. *Ultraflex 3* ISO 13007 C2ES1P1
3. Waterproofing Membrane:
  - A. *Mapelastic™ 315*
4. Mortar Bed:
  - A. *Modified Mortar Bed*