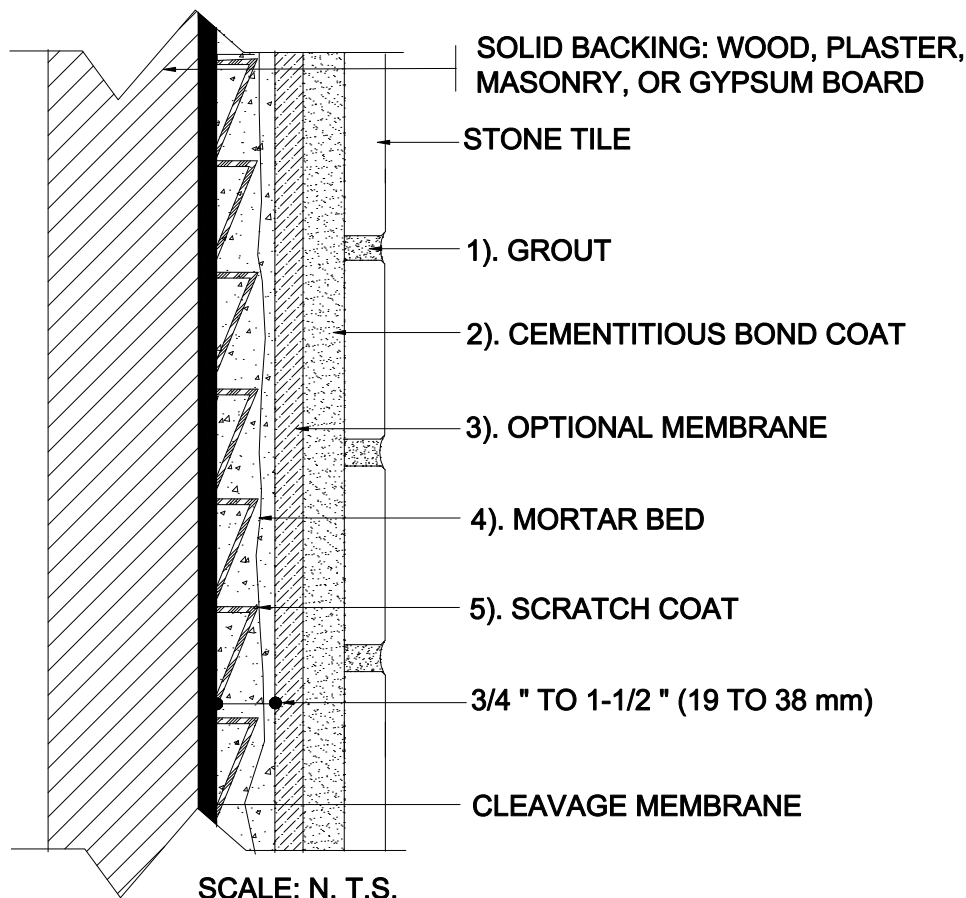


# INTERIOR WALLS OVER SOLID BACKING

Solid Backing  
Mortar Bed  
Stone Tile

MAPEI: MW221-Stone  
TCNA: W221-16- Stone  
TTMAC: 307-W  
Version: 2016



## MAPEI Products Assembly

1. Grout Options:
  - A. *Ultracolor Plus* ISO 13007 CG2WAF
  - B. *Keracolor U* ISO 13007 CG2WA
  - C. *Kerapoxy* or *Kerapoxy CQ* ISO 13007 RG
  - D. *MAPEI Flexcolor CQ*
2. Cementitious Bond Coat Options:
  - A. *Kerabond T / Kerabond System* ISO 13007 C2E82P2
  - B. *Kerabond/Kerabond System* ISO 13007 C2E82P2
  - C. *Granrapido System* ISO 13007 C2F82P2
  - D. *Ultraflex LFT* ISO 13007 C2TE81P1
  - E. *Ultraflex LFT Rapid* ISO 13007 C2TF81P1
  - F. *Ultraflex 3* ISO 13007 C2E81P1
3. Optional Waterproofing Membrane Options:
  - A. *Mapelastic AquaDefense*
  - B. *Mapelastic 315*
4. Mortar Bed:
  - A. *Modified Mortar Bed*
5. Scratch Coat:
  - A. *Modified Mortar Bed*