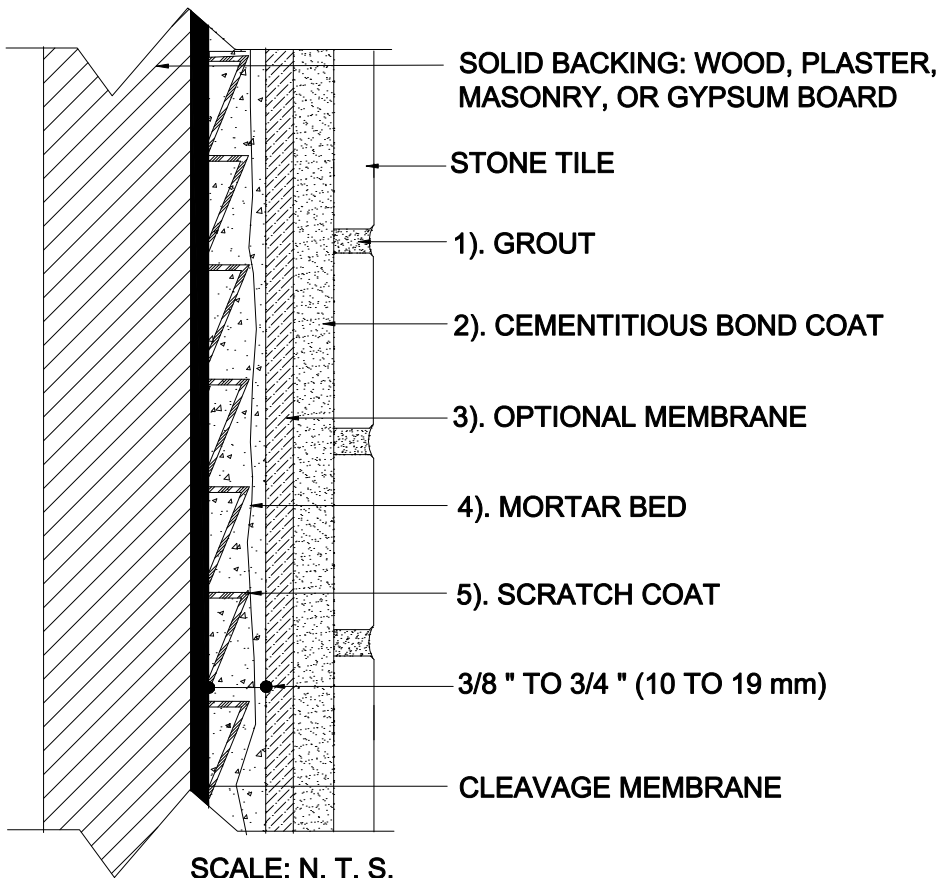


INTERIOR WALLS OVER SOLID BACKING

Mortar Bed (One-Coat Method)
Stone Tile

MAPEI: MW222-Stone
TCNA: W222-16-Stone
TTMAC: N/A
Version: 2016



MAPEI Products Assembly

1. Grout Options:
 - A. Ultracolor[®] Plus ISO 13007 CG2WAF
 - B. Keracolor[™] U ISO 13007 CG2WA
 - C. Kerapoxy[®] or Kerapoxy CQ ISO 13007 RG
 - D. MAPEI Flexcolor[™] CQ
2. Cementitious Bond Coat Options:
 - A. Kerabond[™] T / Keralestic[™] System ISO 13007 C2E82P2
 - B. Kerabond/Keralestic[™] System ISO 13007 C2E82P2
 - C. Granraplo[®] System ISO 13007 C2F82P2
 - D. Ultraflex[™] LFT[™] ISO 13007 C2TE81P1
 - E. Ultraflex LFT Rapid ISO 13007 C2TF81P1
 - F. Ultraflex 3 ISO 13007 C2E81P1
3. Optional Waterproofing Membrane Options:
 - A. Mapelestic[™] AquaDefense
 - B. Mapelestic 316
4. Mortar Bed:
 - A. Modified Mortar Bed
5. Scratch Coat:
 - A. Modified Mortar Bed