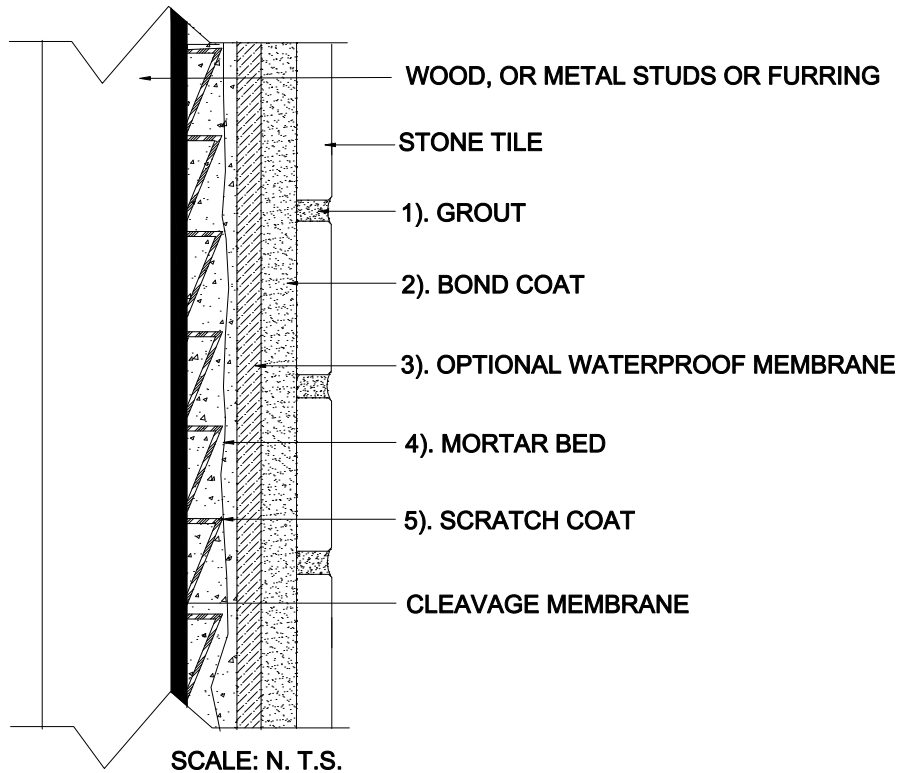


## INTERIOR WALLS OVER WOOD OR METAL STUDS

Wood or Metal Studs  
Mortar Bed  
Stone Tile

MAPEI: MW231 / MW241-Stone  
TCNA: W231 / W241-16-Stone  
TTMAC: 308W-A  
Version: 2016



### MAPEI Products Assembly

1. Grout Options:
 

A. Ultracolor <sup>®</sup> Plus	ISO 13007 CG2WAF
B. Keracolor <sup>™</sup> U	ISO 13007 CG2WA
C. Kerapoxy <sup>®</sup> or Kerapoxy CQ	ISO 13007 RG
D. MAPEI Flexcolor <sup>™</sup> CQ	
2. Cementitious Bond Coat Options:
 

A. Kerabond <sup>™</sup> T / Keralastic <sup>™</sup> System	ISO 13007 C2ES2P2
B. Kerabond/Keralastic <sup>™</sup> System	ISO 13007 C2ES2P2
C. Granirapid <sup>®</sup> System	ISO 13007 C2FS2P2
D. Ultraflex <sup>™</sup> LFT <sup>™</sup>	ISO 13007 C2TES1P1
E. Ultraflex LFT Rapid	ISO 13007 C2TFS1P1
F. Ultraflex 3	ISO 13007 C2ES1P1
3. Optional Waterproofing Membrane Options:
 

A. Mapelastic <sup>™</sup> AquaDefense
B. Mapelastic 315
4. Mortar Bed:
 

A. Modified Mortar Bed
------------------------
5. Scratch Coat:
 

A. Modified Mortar Bed
------------------------