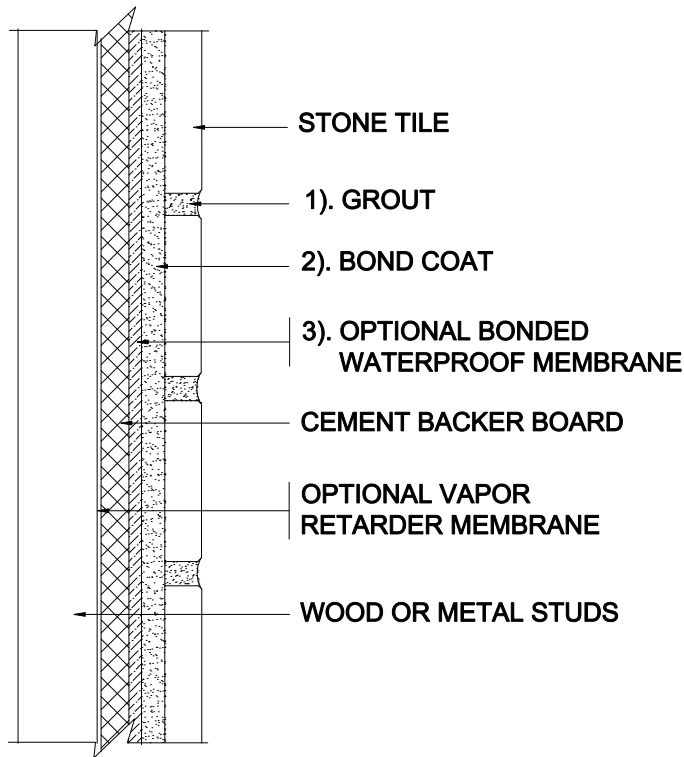


INTERIOR WALLS OVER WOOD OR METAL STUDS

Wood or Metal Studs
 Cement Backer Board
 Stone Tile

MAPEI: MW244C-Stone
 TCNA: W244C-16-Stone
 TTMAC: 305W-A
 Version: 2016



SCALE: N. T. S.

MAPEI Products Assembly

1. Grout Options:

- | | | |
|----|--|------------------|
| A. | <i>Ultracolor[®] Plus</i> | ISO 13007 CG2WAF |
| B. | <i>Keracolor[™] U</i> | ISO 13007 CG2WA |
| C. | <i>Kerapoxy[®] or Kerapoxy CQ</i> | ISO 13007 RG |
| D. | <i>MAPEI Flexcolor[™] CQ</i> | |

2. Cementitious Bond Coat Options:

- | | | |
|----|---|--------------------|
| A. | <i>Kerabond[™] T / Keralastic[™] System</i> | ISO 13007 C2ES2P2 |
| B. | <i>Kerabond/Keralastic[™] System</i> | ISO 13007 C2ES2P2 |
| C. | <i>Gran/RaploF System</i> | ISO 13007 C2FS2P2 |
| D. | <i>MAPEI Ultralite[™] Mortar</i> | ISO 13007 C2TES1P1 |
| E. | <i>Ultraflex[™] LFT[™]</i> | ISO 13007 C2TES1P1 |
| F. | <i>Ultraflex LFT Rapid</i> | ISO 13007 C2TFS1P1 |
| G. | <i>Ultraflex 3</i> | ISO 13007 C2ES1P1 |

3. Optional Waterproofing Membrane Options:

- | | |
|----|---|
| A. | <i>Mapelastic[™] AquaDefense</i> |
| B. | <i>Mapelastic 315</i> |