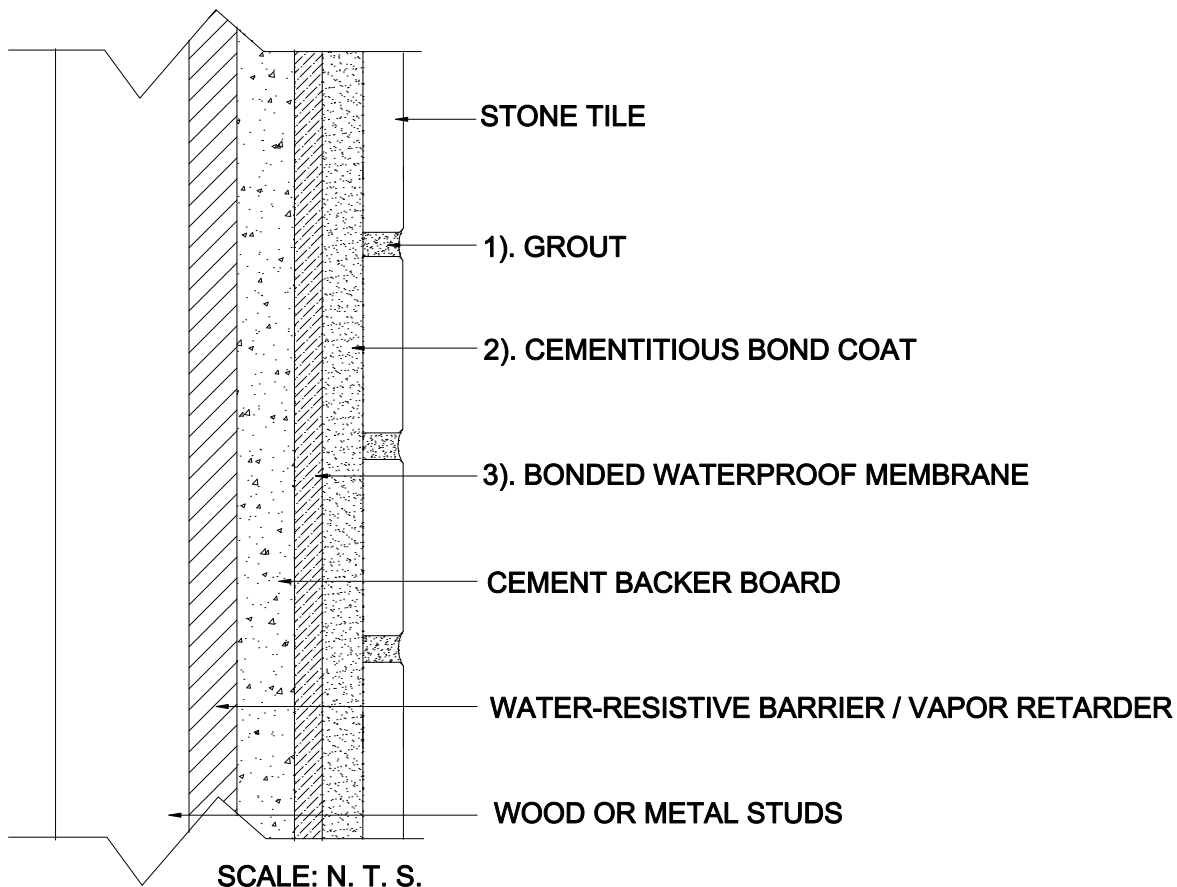


EXTERIOR WALLS

Wood or Metal Studs
Cement Backer Board
Stone Tile

MAPEI: MW244E-Stone
TCNA: W244E-16-Stone
TTMAC: 305W-A
Version: 2016



MAPEI Products Assembly

1. Grout:
 - A. *Ultracolor[®] Plus* ISO 13007 CG2WAF
2. Cementitious Bond Coat Options:
 - A. *Kerabond/Keralastic™ System* ISO 13007 C2ES2P2
 - B. *Kerabond™ T/Keralastic™ System* ISO 13007 C2ES2P2
 - C. *Granirapid™ System* ISO 13007 C2FS2P2
3. Bonded Waterproof Membrane Options:
 - A. *Mapelastic™ AquaDefense*
 - B. *Mapelastic 315*