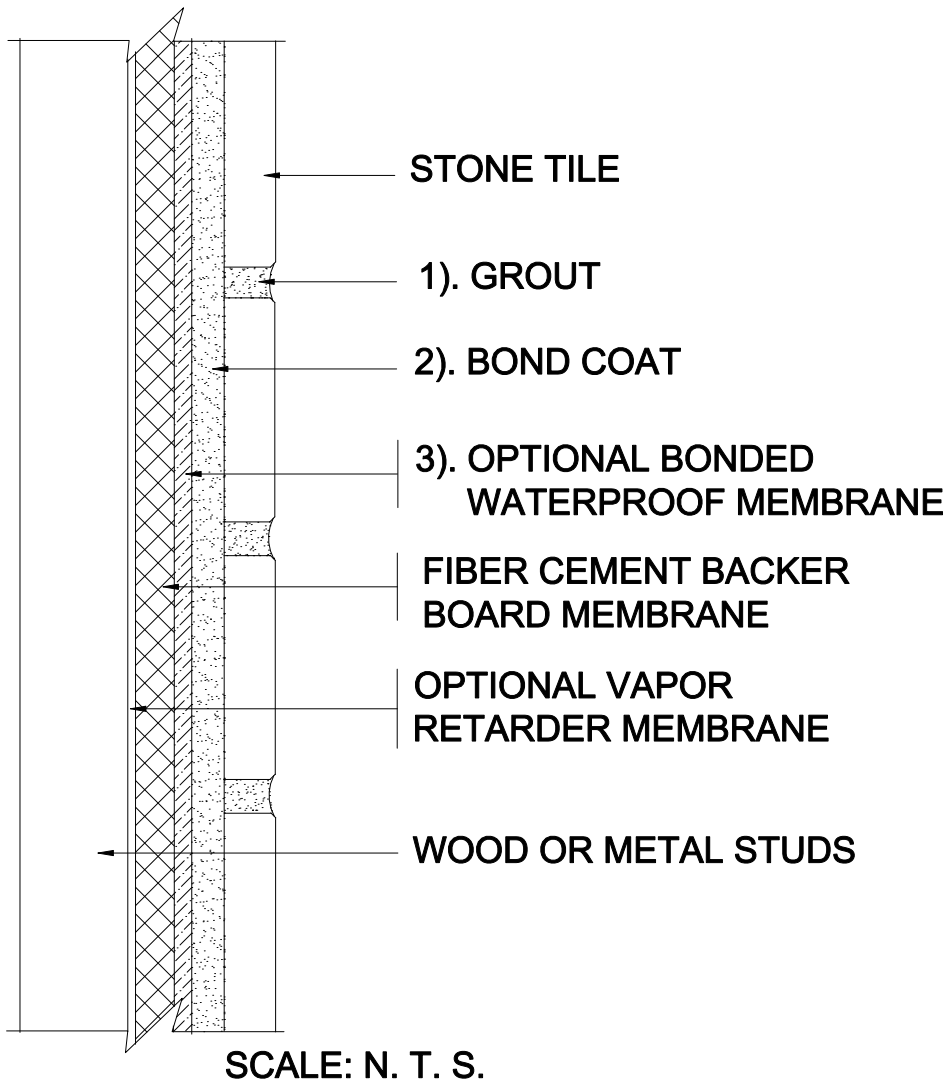


# INTERIOR WALLS OVER WOOD OR METAL STUDS

Fiber-Cement Backer Board  
Stone Tile

MAPEI: MW244F-Stone  
TCNA: W244F-16-Stone  
TTMAC: 305W-A  
Version: 2016



## MAPEI Products Assembly

### 1. Grout Options:

- |    |  |           |        |
|----|--|-----------|--------|
| A. | <i>Ultracolor<sup>®</sup> Plus</i>         | ISO 13007 | CG2WAF |
| B. | <i>Keracolor™ U</i>                        | ISO 13007 | CG2WA  |
| C. | <i>Kerapoxy<sup>®</sup> or Kerapoxy CQ</i> | ISO 13007 | RG     |
| D. | <i>MAPEI Flexcolor™ CQ</i>                 |           |        |

### 2. Cementitious Bond Coat Options:

- |    |   |           |          |
|----|---|-----------|----------|
| A. | <i>Kerabond™ T / Keralastic™ System</i> | ISO 13007 | C2ES2P2  |
| B. | <i>Kerabond/Keralastic™ System</i>      | ISO 13007 | C2ES2P2  |
| C. | <i>Granraplo<sup>®</sup> System</i>     | ISO 13007 | C2FS2P2  |
| D. | <i>MAPEI Ultralite™ Mortar</i>          | ISO 13007 | C2TES1P1 |
| E. | <i>Ultraflex™ LFT™</i>                  | ISO 13007 | C2TES1P1 |
| F. | <i>Ultraflex LFT Raplo</i>              | ISO 13007 | C2TFS1P1 |
| G. | <i>Ultraflex S</i>                      | ISO 13007 | C2ES1P1  |

### 3. Optional Waterproofing Membrane Options:

- |    |                                |  |  |
|----|--------------------------------|--|--|
| A. | <i>Mapelastic™ AquaDefense</i> |  |  |
| B. | <i>Mapelastic S15</i>          |  |  |