

INTERIOR WALLS OVER WOOD OR METAL STUDS

Wood or Metal Studs

Fiber-Reinforced Water-Resistant Gypsum Backer Board

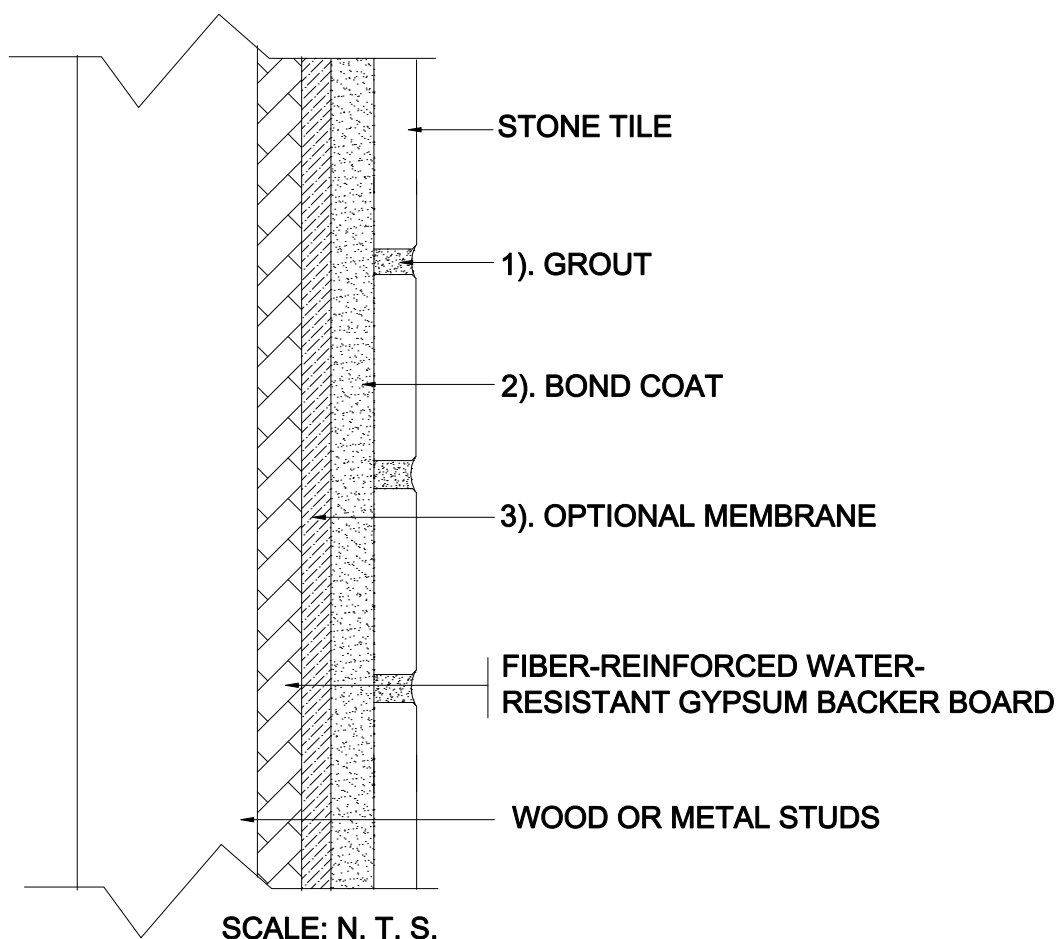
Stone Tile

MAPEI: MW247-Stone

TCNA: W247-16-Stone

TTMAC: N/A

Version: 2016



MAPEI Products Assembly

1. Grout Options:

- | | |
|---------------------------------|------------------|
| A. Ultracolor [®] Plus | ISO 13007 CG2WAF |
| B. Keracolor™ U | ISO 13007 CG2WA |
| C. Kerapoxy or Kerapoxy CQ | ISO 13007 RG |
| D. MAPEI Flexcolor™ CQ | |

2. Cementitious Bond Coat Options:

- | | |
|------------------------------------|--------------------|
| A. Kerabond™ T/ Keralastic™ System | ISO 13007 C2ES2P2 |
| B. Kerabond/Keralastic™ System | ISO 13007 C2ES2P2 |
| C. Gran/rapid [®] System | ISO 13007 C2FS2P2 |
| D. MAPEI Ultralite™ Mortar | ISO 13007 C2TES1P1 |
| E. Ultraflex™ LFT™ | ISO 13007 C2TES1P1 |
| F. Ultraflex LFT Rapid | ISO 13007 C2TFS1P1 |
| G. Ultraflex 3 | ISO 13007 C2ES1P1 |
| H. Kerapoxy 410 | ISO 13007 R2 |

3. Optional Waterproofing Membrane Options:

- | | |
|----------------------------|--|
| A. Mapelastic™ AquaDefense | |
| B. Mapelastic 315 | |