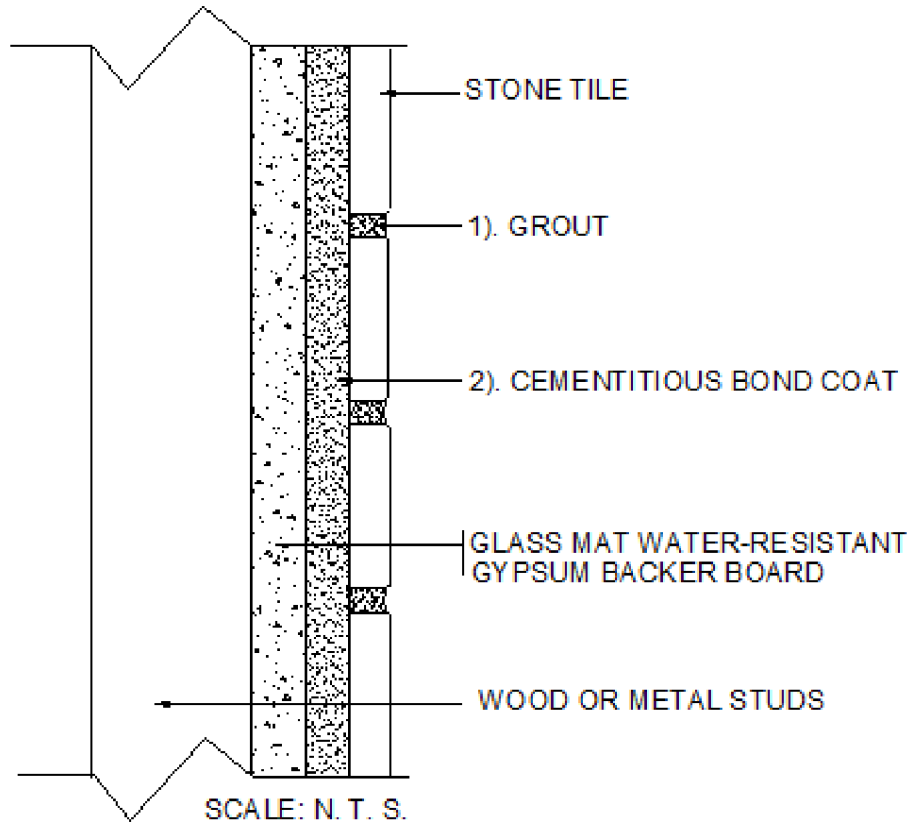


INTERIOR WALLS OVER WOOD OR METAL STUDS

Wood or Metal Studs
 Glass Mat Water-Resistant Gypsum Backer Board
 Stone Tile

MAPEI: MW248-Stone
 TCNA: W248-16-Stone
 TTMAC: N/A
 Version: 2016



MAPEI Products Assembly

1. Grout Options:

A. <i>Ultracolor[®] Plus</i>	ISO 13007 CG2WAF
B. <i>Keracolor[™] U</i>	ISO 13007 CG2WA
C. <i>Kerapoxy[®] or Kerapoxy CQ</i>	ISO 13007 RG
D. <i>MAPEI Flexcolor[™] CQ</i>	

2. Cementitious Bond Coat Options:

A. <i>Kerabond[™] T / Keralastic[™] System</i>	ISO 13007 C2ES2P2
B. <i>Kerabond/Keralastic[™] System</i>	ISO 13007 C2ES2P2
C. <i>Granirapid[™] System</i>	ISO 13007 C2FS2P2
D. <i>Ultraflex[™] 3</i>	ISO 13007 C2ES1P1
E. <i>Ultraflex LFT[™]</i>	ISO 13007 C2TES1P1
F. <i>Ultraflex LFT Rapid</i>	ISO 13007 C2TFS1P1
G. <i>MAPEI Ultralite[™] Mortar</i>	ISO 13007 C2TES1P1

Minimum Performance Requirements from TCNA 2016 Guidelines

Cementitious Grout: ISO 13007 CG1 or ANSI A118.6 or better

Epoxy Grout: ISO 13007 RG or ANSI A118.3 or better

Cementitious Bond Coat: ISO 13007 C2S1 or ANSI A118.4 or better

Environmental Classifications

Res 1

Comm 1